



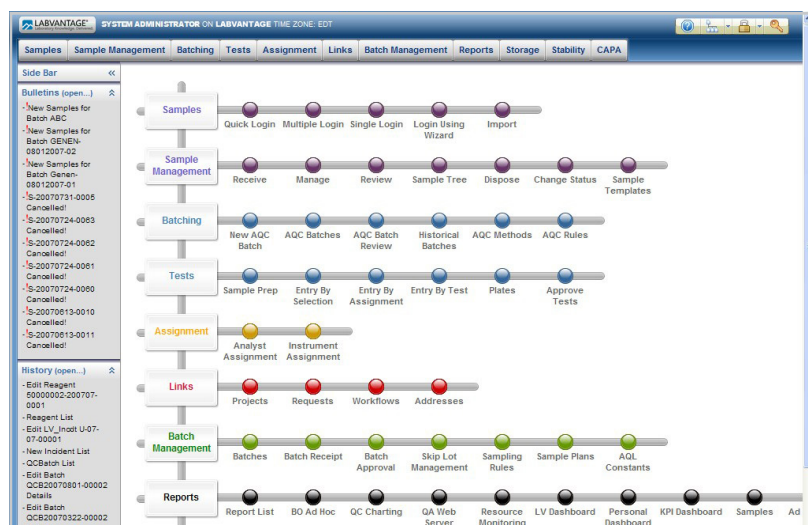
LABORATORY KNOWLEDGE. DELIVERED.™

LABVANTAGE®

LABVANTAGE® LABORATORY INFORMATION MANAGEMENT SUITE

LabVantage builds upon 25+ years of laboratory information management know-how and almost a decade of thin-client computing experience to deliver an enterprise LIMS platform that redefines and optimizes the way leading laboratories conduct business. LabVantage is a thin-client laboratory information management suite (LIMS) that is tailored to manage an organization's critical laboratory information across its worldwide R&D pipeline and manufacturing supply chain to optimize productivity and more effectively share knowledge.

LabVantage continues to redefine enterprise laboratory informatics with its leading combination of functionality, flexibility, and technology in one platform. As a zero footprint and configurable off-the-shelf (COTS) solution, it consolidates functionality typically found in multiple laboratory systems. With its combination of solutions-oriented modules and multinationalization support, LabVantage delivers the most complete and versatile, multi-site, and multi-language enterprise backbone for the laboratory enterprise.



- Enterprise-wide information management and tracking for any laboratory item, including samples, reagents, compounds, specifications, experiments, tasks, projects, studies, subjects, protocols, etc.
- Intuitive data entry from virtually any Internet or Intranet access device and easy integration to 3rd party instruments and systems.
- Workflow design and process automation through graphical user interfaces.
- Compliance with internal standards and government regulations through programming rules and electronic signature.

The LabVantage Suite helps laboratories increase productivity, lower operating costs, and improve quality. LabVantage's thin-client architecture provides users, both internal and external to the laboratory, with the ability to access LabVantage. Organizations can model their business-specific workflows, seamlessly integrate with robots, analytical instruments, and business applications, and meet government regulations.

With flexible and easy-to-use configuration tools, LabVantage can be quickly tailored to specific roles within the enterprise, adapted to changing business needs, and extended to other areas of the organization, while reducing ongoing validation costs.

A cutting-edge information management platform coupled with robust functional modules, LabVantage offers the functionality, flexibility, and scalability that will meet customers' needs both today and in the future.

LABVANTAGE BROOKLINE LabVantage®

LABVANTAGE SOLUTION MATRIX

LABVANTAGE BROCHURE® LabVantage®

No two companies manage their laboratories alike. They may share some common information management requirements, but their unique combination of industry, market, and internal business processes necessitates a LIMS that can be configured to meet their specific organizational requirements. Therefore, LabVantage is designed to meet the needs of a variety of laboratory environments and organizations across multiple industries.

LabVantage provides pertinent laboratory information management features, along with robust functional modules and easy-to-use configuration capabilities, allowing the same solution to be tailored to the unique requirements of each laboratory around the world and across the organization's R&D pipeline and manufacturing supply chain. The LabVantage Solutions Matrix™ (below) charts the breadth and depth of the solutions that LabVantage delivers with its flagship product, LabVantage.

MARKETS	INDUSTRIES	Pharma & Bioscience							
		Health & Personal Care							
		Food & Beverage							
		Contract Services					PetroChemicals		
Diagnostic/Analytical	✓	✓	✓	✓	✓	✓	✓	✓	✓
Quality Management (QA/QC & PAT)	✓ (PAT)	✓ (PAT)	✓ (PAT)	✓ (PAT)	✓	✓	✓	✓	✓
Raw Materials Testing	✓	✓	✓	✓	✓	✓	✓	✓	✓
Formulation/Process Research	✓	✓	✓	✓	✓	✓	-	-	-
Development	✓ (Clin & PreClin)	✓ (Clin & PreClin)	✓ (Clin & PreClin)	✓ (Clin & PreClin)	✓	✓	-	-	-
Research/Discovery	✓	✓	✓	✓	✓	✓	-	-	-
INDUSTRIES	MARKETS	Process Chemicals							
		Parts, Hardware & Equipment							
		Law Enforcement/National Security							
		Water							

LABVANTAGE SOLUTIONS

A LabVantage Solution is comprised of a combination of our LabVantage Enterprise Platform, LabVantage Modules, configuration through our Evergreen Studio™ Web Page Designer, and integration of 3rd party instruments & applications.

LABVANTAGE ENTERPRISE PLATFORM

At the core of every LabVantage Solution is a sophisticated information management system. While many competitors are only just beginning to develop browser-based products, LabVantage has already released its 3rd generation thin-client product.

LabVantage contains functionality required of laboratories spanning from R&D through manufacturing across multiple industry and market segments, including:

- Secure, thin-client, enterprise-wide access and visibility
- Extensive sample management with end-to-end traceability
- Enables compliance with 21 CFR Part 11, ERES, GxP, QSR, HIPAA, EUDDP, HACCP and other standards & government regulations
- Workflow automation to streamline business and decision processes
- Open architectural framework and Java application programming interface (API) for easy system integration with instruments & 3rd party applications
- Extensive reporting capabilities
- User-friendly graphical interface

UBIQUITOUS GLOBAL DEPLOYMENT

True multinationalization (M18N) compliance for data translation, time zones, regional settings, and date formatting coupled with Unicode support enables seamless multi-site and multi-language deployment and collaboration.

EVERGREEN™ WEB PAGE DESIGNER™

Evergreen Web Page Designer (Evergreen) enables customers to intuitively configure LabVantage web pages to tailor the solution to their business and laboratory needs. This is the same tool leveraged by LabVantage's own professional services organization to configure your LabVantage solution. Evergreen requires no prior programming knowledge, and its intuitive functionality allows for the rapid setup and change of initial and ongoing system and interface configurations.

Evergreen Key Benefits:

- Wizard-driven user interface provides step-through design and configuration without the need for development skills
- Rapid design and augmentation of system architecture, database configuration, end user administration, business process automation, and end user interface configurations
- Property-driven and inheritance-base configuration maintains upgradability throughout the life of your LabVantage configuration
- LabVantage ships with over 600 Evergreen template pages that are quality tested for scalability and performance

LABVANTAGE SOLUTIONS (CONT'D)

LABVANTAGE MODULES

LabVantage understands the challenges unique to today's laboratories and offers specific IT and end-user driven modules to address these different needs. The table below shows the key features and benefits of the LabVantage modules.

COMPREHENSIVE REPORTING AND ANALYTICS-DRIVEN DECISION SUPPORT

LabVantage offers a number of embedded and integrated reporting and analytics options that can be deployed and securely accessed as needed by the appropriate user. The variety of options ensures that LabVantage provides the most versatile and flexible options that deliver reporting and analytics out-of-the-box, while also providing integrative options for reporting and analytics applications you've already invested in.

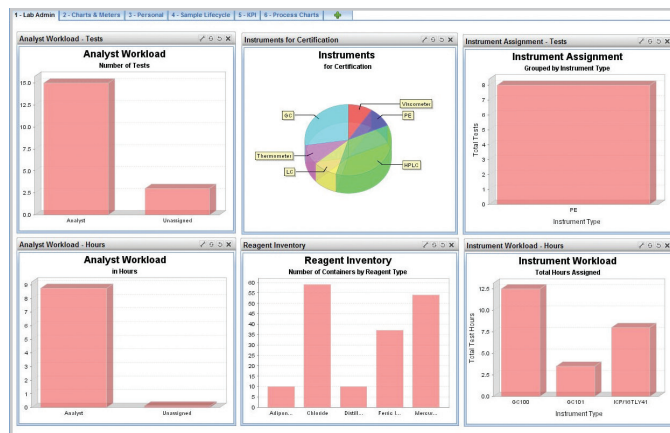
LABVANTAGE MODULE	FUNCTIONALITY	KEY BENEFITS
Reagent and Standards Management	Complete solution for the management, maintenance, and tracking of laboratory consumables	Standardizing formula creation and maintenance. Optimizes shipment, management, tracking control, and reordering of standard and laboratory created consumables.
Stability	Automating shelf-life testing and determination of product batch stability	Meeting requirements stipulated in 21 CFR 211 through ensuring products distributed to the public remain chemically and structurally unwavering
Advanced Storage and Logistics (ASL)	Inventory tracking and logistics management for samples, reagents, and any other items in the laboratory	Accurately tracking complex laboratory item acquisition, location, and disposition with robust custodial tracking
BioBanking	Centralized biological specimen data capture and tracking with heightened regulatory compliance	Addressing the unique challenges of specimen collection and banking for complete biorepository management
Corrective Action and Preventive Action (CAPA)	Monitoring quality control and assurance	Maintaining compliance with standards and regulatory guidelines
Clustering	Facilitating load balancing and scalability by enabling multiple nodes in a cluster	Achieving enhanced performance, scalability, and reliability
LabVantage Enterprise Connector (SEC)	Certified integration of LabVantage with SAP ERP system powered by SAP Netweaver™	Enabling real-time data transfer between LabVantage and SAP to accelerate time-to-market and facilitate decision-making processes

Combined or deployed as needed, the extensive array of reporting and analytics options offered with LabVantage provide comprehensive, real-time data access, visibility, and report capabilities that ultimately arm the organization with the knowledge needed to make more informed critical decisions.

LABVANTAGE SOLUTIONS (CONT'D)

LABVANTAGE BROCHURE®
LabVantage®

- LabVantage Dashboards - powerful business management tool provides an “at a glance” view of definable key performance indicators (KPIs).
- LabVantage Ad-hoc Query Tool - real-time “in-application” data mining and analysis without the need for SQL programming.
- LabVantage Reporting - seamlessly embedded, on-demand reporting and data visualization tools.
- LabVantage Advanced Reporting – robust information and performance management tools powered by Business Objects™.
- LabVantage Analytics - built-in visual charting for control charts and trend charts.
- LabVantage Advanced Analytics - full-featured SPC charting and statistics powered by Northwest Analytical®.
- LabVantage Operational Intelligence – real-time, workflow-driven, multi-source data integration, visualization, and analytics powered by InforSense™.



MULTIPLE APPLICATION SERVER OPTIONS

Expansive support for industry-leading application servers including:

- IBM WebSphere®
- BEA WebLogic®
- Sybase® EA Server
- JBoss™ Application Server 4.2.2 GA

INTEGRATION OF 3RD PARTY INSTRUMENTS & APPLICATIONS

LabVantage seamlessly integrates with external systems such as lab instrumentation, robotics, analytical tools, public and private database, ERP systems, and other business applications. This integration eliminates the need for unwieldy manual entry, saving time and reducing errors. Also, this promotes efficiency through information sharing, as well as through the continued use of crucial and familiar laboratory and enterprise information management and analysis tools.

LABVANTAGE OVERVIEW

LabVantage Laboratory Information Management Suite contains a unique combination of rich functionality and configurability, providing laboratories with a robust solution that will help them decrease costs, as well as improve quality and productivity. LabVantage's key competitive advantages are:

- Managing Discovery to QM on a Single Enterprise Platform
- Built-In Evergreen™ Web Page Design & Configuration Tool
- Only True Thin-Client Architecture Available

MANAGING DISCOVERY TO QM ON A SINGLE ENTERPRISE PLATFORM

As mentioned above, this thin-client approach of LabVantage creates an enterprise platform with a powerful, low-cost, low-maintenance information technology (IT) framework for today's competitive laboratory environment.

Simplify knowledge sharing with consolidated laboratory data and information

Through greatly simplified knowledge sharing with consolidated laboratory data and information, LabVantage facilitates the decision-making process by providing companies with enriched, critical laboratory data from discovery to quality management.

Reduce costs with a single IT platform to deploy and manage

Unlike client/server implementations, which typically bear a high cost of deploying client applications to a large end-user base, LabVantage is a true thin-client. As a result, it is loaded on a central application server and not necessary to load software and ensuing upgrades on individual end-users' PCs, saving countless maintenance hours and eliminating personnel downtime.

Increase user acceptance with an intuitive and common global user interface

The LabVantage user interface has a look and feel similar to that of many popular web sites. For that reason, its use is intuitive, which minimizes the initial and ongoing training cost.

BUILT-IN EVERGREEN™ WEB PAGE DESIGNER & CONFIGURATION TOOL

Built into the latest versions of LabVantage is a sophisticated configuration tool, Evergreen Web Page Designer. Evergreen offers important benefits including:

Tailored solution with configuration, not customization

Evergreen allows system administrators to quickly change LabVantage web pages. This helps users reduce implementation time and expense, as well as ongoing maintenance costs, by enabling them to easily setup and change system architecture, database configuration, user administration, business process automation and end-user interface configurations. Evergreen comes with an extensive library of page-types to jump-start configuration and system enhancements, as well as an extensive library of Wizard Tasks to improve end-user training and SOP adherence.

Eliminate the reliance on high cost programming resources with easy-to-use features

The "Build vs. Buy" conundrum is common to organizations that are seeking a solution that is specifically tailored to their laboratory requirements but do not wish to spend considerable resources to build from scratch. LabVantage is an ideal solution for laboratories in this situation because it provides an established and proven LIMS platform, with built-in configuration tools.

LABVANTAGE OVERVIEW (CONT'D)

Reduce validation cost & effort through a property-driven configuration tool

Evergreen offers uncompromising web page design and development with the ultimate in maintainability. It provides property-driven, configurable web pages that are inheritance-based, to provide maximum maintainability and upgradability throughout the life of LabVantage configuration.

ONLY TRUE THIN-CLIENT ARCHITECTURE AVAILABLE

While many LIMS solutions are just beginning to incorporate web-based designs, LabVantage has pioneered thin-client LIMS, offering customers significant benefits, including:

Secure enterprise-wide access through a browser, with no plug-ins, downloads or applets

LabVantage can be accessed from virtually any Internet-ready device with no plug-ins, downloads or applets. Access is role-based and password protected for security, complying with 21 CFR Part 11. The benefit of this type of solution is that users internal and external to the lab, as well as customers and vendors, can easily access the information they need and to which they have rights—anytime, from anywhere.

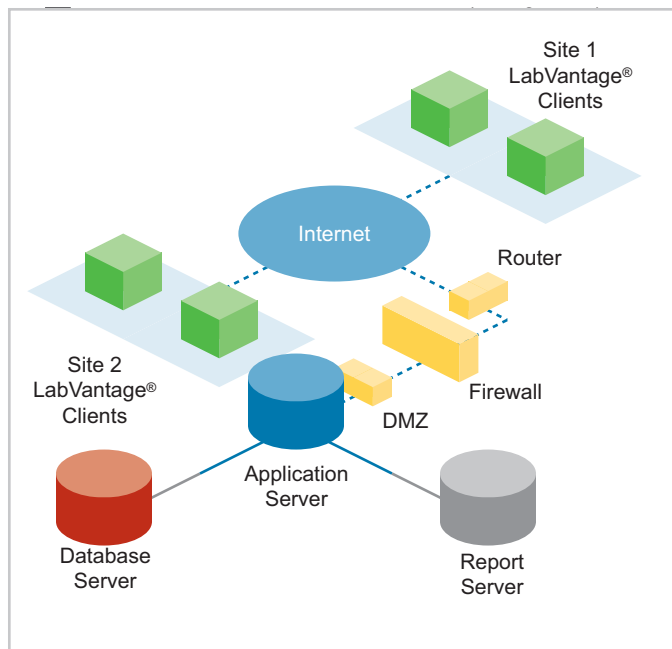
High visibility to laboratory information increases enterprise-wide productivity, as well as the speed and effectiveness of decision-making.

Lower total cost of ownership (TCO)

A thin-client architecture provides a powerful, low-cost, low-maintenance framework for today's competitive laboratory environment. With a thin-client LIMS, the system resides on a central application server and it is not necessary to load software and ensuing upgrades on individual end users' PCs. This greatly increases the return on investment for your LIMS.

Enhance high performance, reliability and scalability with clustering and load balancing

LabVantage's scalable architecture enables organizations to address system performance and reliability through clustering and load balancing. Performance can be easily scaled by adding servers to the cluster, and clustering facilitates load balancing, a process that routes client requests to servers within the cluster. If one or more servers fail, client requests are automatically routed to other servers within the cluster so there is no break in service.



LABVANTAGE VALUE PROPOSITION

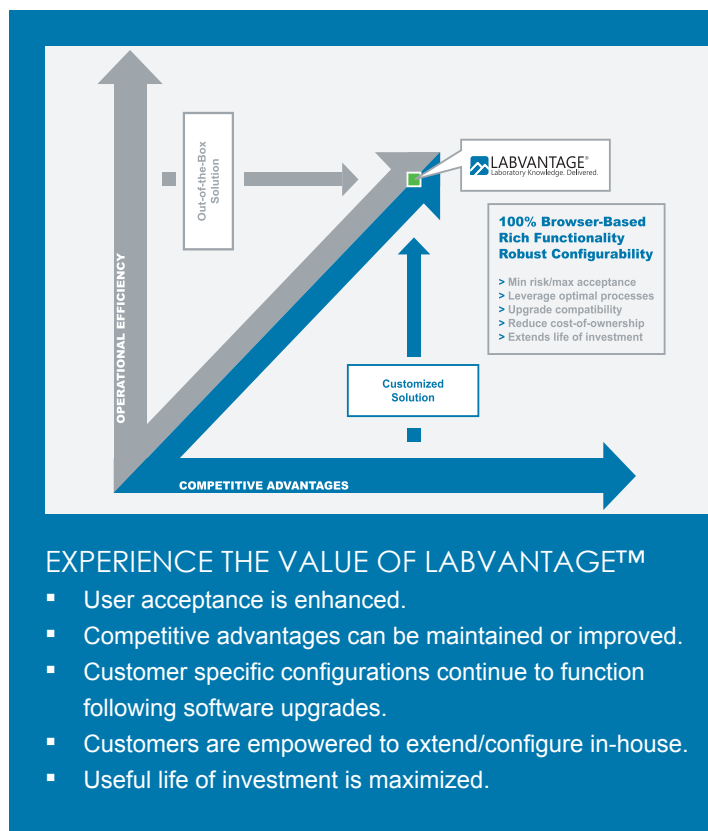
LABVANTAGE BROCHURE®
LabVantage®

In the world of commercial software solutions, there are two vastly different solution offerings - “Out-of-the-Box Solutions” and “Customized Solutions.” Regardless of the solution type, organizations need to find a solution that helps them solve critical business problems, while achieving operational efficiency and competitive advantage. The challenge, however, is that both of these solution approaches present some potential limitations.

Out-of-the-Box Solutions often achieve high levels of operational efficiency. These systems usually offer significant functionality, limited customization capabilities, and typically can be implemented relatively quickly. Unfortunately, due to the static nature of the system design, users often struggle to enhance their competitive advantage or unique process differentiators. For the most part, any company using this type of product will typically be forced to conduct certain processes and functions exactly as the next company using this type of product, with virtually no differentiation or competitive advantage.

Customized Solutions often maintain the exact opposite characteristics of the “Out-of-the-Box Solution.” Systems can be designed to achieve complete customization, thus maintaining or enhancing uniqueness or competitive advantage. Unfortunately, this customization often results in long implementation times, significant reliance on the vendor for future modifications, and significant time and costs associated with upgrades of software and/or technology.

The LabVantage Value Proposition offers the best of both worlds. LabVantage has been designed with a rich foundation of pertinent functionality, along with easy to use configuration capabilities that allow LabVantage to map to unique process requirements, as well as rapidly adapt to changing needs. The benefits of this approach are significant, as they all help to maximize success while minimizing risk.



LABVANTAGE KEY FEATURES AND BENEFITS

LabVantage understands the challenges of today's laboratories. LabVantage is developed by industry experienced professionals focused on minimizing obstructions to success by automating laboratory information management. LabVantage addresses, among many others, the following concerns, common to today's leading laboratories.

PROVIDE ACCESS TO MULTIPLE LABS AND REMOTE EMPLOYEES OR CUSTOMERS

Today's sophisticated organizations need to be able to efficiently share information across multiple laboratories and with employees and customers outside of the physical laboratory. Through leveraging LabVantage's thin-client architectural framework, internal and external personnel are able to access enterprise-wide information through a secure Internet browser.

- LabVantage is loaded on a central application server (not individual PCs), and is accessed by users via the Internet or company Intranet, offering a lower cost of deployment compared to traditional client/server applications.
- Internet/Intranet access to LabVantage is secure, and protected by passwords and role-based rights.
- Organization decision-makers outside the lab can access lab-generated dashboards and reports, increasing lab visibility throughout the enterprise, and expediting decision-making processes.
- Customers can input orders/samples, and directly access test results, improving customer service and satisfaction.
- LabVantage is easy to learn and use because its interface has the familiar look of many web sites. This intuitive usability promotes system acceptance both within and outside the organization.

ELIMINATE LAB BOTTLENECKS

LabVantage helps eliminate debilitating lab bottlenecks by enabling workflow and analytical process automation. This technology automates business and decision-making processes – streamlining operations, reducing costs, and giving organizations a competitive edge. Specifically, LabVantage:

- Provides the ability to mirror any work or decision process graphically.
- Minimizes the need for LabVantage or internal DBA support for workflow database changes.
- Provides the ability to configure workflows based upon security and user role within the particular organization.
- Provides a library of pre-configured workflow components to streamline configuration.
- Leverages and integrates external data sources to help “direct” tasks for further automation.

MANAGE SAMPLES THROUGHOUT THEIR ENTIRE LIFESPAN WITH END-TO-END SAMPLE TRACEABILITY

LabVantage provides backward and forward sample traceability throughout a sample's entire life cycle, enabling quick and easy access to sample status. In addition, LabVantage's advanced scheduling capabilities allow users to pre-schedule routine, time-based sampling, reducing errors and saving time.

- Rapidly add samples either ad hoc, by request, by batch, by sample point, or by project.
- Setup sample-oriented workflows and track sample components/ingredients.
- Immediately identify batches by lot ID, as well as lot location.
- Quickly communicate sample status through automated alerts and bulletins.
- Utilize flexible scheduling functionality to specify sample parameters such as time, date, recurrence, sampling point, testing techniques, zones and sources.

LABVANTAGE KEY FEATURES AND BENEFITS (CONT'D)

COST-EFFECTIVELY CONFIGURE ADDITIONAL FUNCTIONALITY

With the configuration capability of Evergreen Web Page Designer, LabVantage enables the creation of new LabVantage web pages, facilitating the rapid construction of a laboratory's unique configuration requirements. Whether it is for initial implementation or ongoing modifications due to changing business environments, Evergreen equips organizations with a configurable and maintainable solution. Moreover, for those organizations unsure of whether to "Build" or "Buy," LabVantage coupled with Evergreen Professional is the ideal solution, offering in-house development teams a solid development platform, or outsourced professional services organizations an easy-to-use configuration tool. In both cases, configuration is accomplished at a much lower cost, and in a much shorter time frame, than would be experienced with custom coding. Moreover, because LabVantage is configured, rather than customized, solutions can leverage future upgrades of LabVantage.

ENTER DATA FROM LAB INSTRUMENTS & EXTERNAL SYSTEMS

LabVantage seamlessly integrates with external systems such as lab instrumentation, robotics, analytical tools, ERP systems, such as SAP ERP. This integration eliminates the need for unwieldy manually entry, saving time and reducing errors.

For example, LabVantage Enterprise Connector (SEC) was designed to maintain the real-time exchange of information between SAP ERP and LabVantage. The first LIMS connector certified for SAP NetWeaver, SEC is a separately installable and configurable application-to-application (A2A) tool that facilitates tailored bi-directional data flow between LabVantage and SAP.

COMPLY WITH INTERNAL AND EXTERNAL STANDARDS, AND GOVERNMENT REGULATIONS

LabVantage automates the documentation of compliance and deviation with lab SOP's, as well as other internal and external standards. And because many laboratories, both in and outside the United States, fall under the jurisdiction of the U.S. Food & Drug Administration (FDA), LabVantage supports compliance with FDA regulations, as well as, other government regulations, such as:

- 21 CFR Part 11 & ERES.
- 21 CFR Part 58 (Good Laboratory Practices).
- 21 CFR Part 210-226 (Current Good Manufacturing Practices).
- 21 CFR Part 820 (Medical Devices).
- ISO/IEC 17025:1999 (General requirements for the competence of testing and calibration laboratories).
- International Committee on Harmonisation Standards.
- Bio-Terrorism Response Act of 2002.
- Hazard Analysis Critical Control Point (HACCP) and Regulation (EC) No 178/2002.
- Health Insurance Portability and Accountability Act (HIPAA) and Other Privacy Laws, through LabVantage BioBanking Module for biospecimen management.

LABVANTAGE KEY FEATURES AND BENEFITS (CONT'D)

LABVANTAGE BROCHURE®
LabVantage®

TEST AGAINST PRE-DETERMINED SPECIFICATIONS FOR QUALITY CONTROL

Organizations assure product quality by establishing specifications and testing the samples/products in their laboratories to ensure that they meet predetermined specifications. LabVantage expedites and manages this process.

- Allows pre-determined specifications to be entered through integration with external systems, or through manual entry.
- Provides graphical specification limit checking.
- Enables users to setup alerts for samples out of specification.
- Automatically documents specifications, analytical methods and results.
- Monitors the accuracy of analytical methods.
- Assures accurate test results to confirm the accuracy of the testing methods.



LabVantage provides extensive Analytical Quality Control (AQC) functionality. Through the use of quality control samples processed by a variety of lab instruments and analytical methods, LabVantage provides a process for proving that test results are valid. LabVantage includes the following features and functionality:

- Ability to setup a variety of sample types.
- Provides common, complex and statistical calculation types, and ability to set custom calculations.
- Ability to define & create testing methods, or select from LabVantage's library of standard methods.
- Provides Shewhart Control Charts to continually monitor that adequate precision and accuracy is maintained.
- Provides automatic generation of instrument sequence files from batches, for direct download to instruments.

ENSURE THAT INSTRUMENTS ARE PROPERLY CALIBRATED AND MAINTAINED

For accurate test results, it is imperative that laboratory instrumentation is properly calibrated and maintained. In regulated environments, it is also crucial that all related documentation is accurately recorded and easily accessible. LabVantage allows users to set reminders for calibration and maintenance, prohibits users from accessing non-calibrated and non-maintained instruments, and provides an automated instrument maintenance log.

TRACK ANALYST CERTIFICATIONS

LabVantage provides a facility for tracking analyst certifications. This is particularly important in government regulated environments, in which it is necessary to document the credentials of staff performing specific studies. LabVantage prohibits the assignment of non-certified analysts to particular

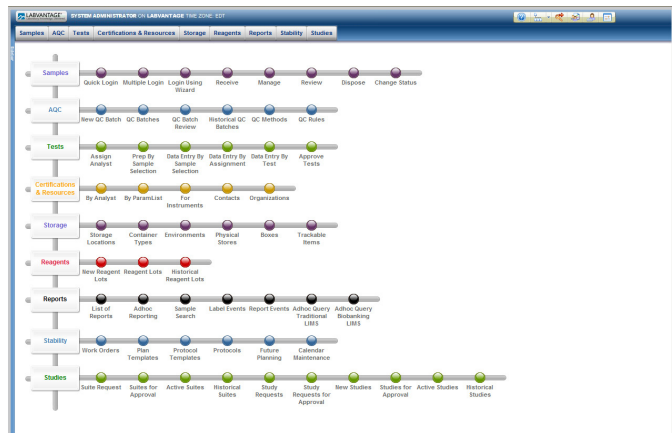
LABVANTAGE KEY FEATURES AND BENEFITS (CONT'D)

studies, and documents the certifications of the appropriately assigned analyst.

STABILITY AND SHELF-LIFE ANALYSIS

For laboratories requiring stability, shelf-life analysis, and reporting, the LabVantage Stability Module enables laboratories to schedule, track and test specific lots of manufactured products over set intervals based on a number of different defined protocols. Functionality includes:

- Support for a variety of conditions within a protocol, including freeze/thaw.
- Storage management that permits definition of the physical storage system (chambers) and environment, and easily shows free vs. occupied locations.
- Inventory management that, at any point during a study's life cycle inventory, shows current and required inventory, as well as flags when required inventory is less than current inventory.
- Study management, including automation of study creation and start date, and special calendar provisions for recurring events or holiday exclusions.
- Work Order Management that tracks the status of tasks assigned to individuals.

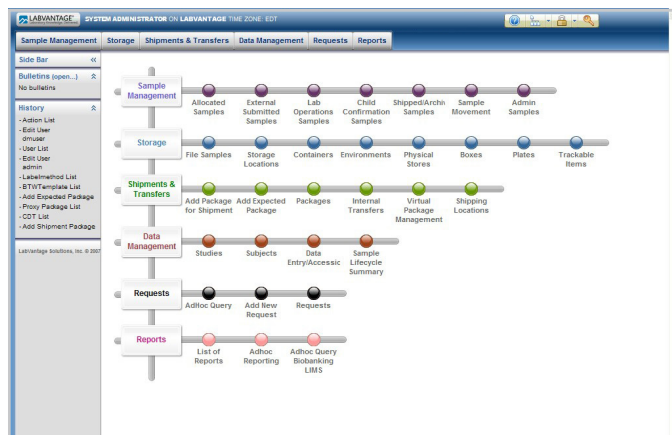


MANAGE INVENTORY OF BIOSPECIMENS

With LabVantage BioBanking or Advanced Storage & Logistics Module, LabVantage enables centralized biological specimen tracking from “cradle to grave” to comply with GLPs & GCPs, satisfy patient consent requirements, enhance scientific accuracy, and improve development efficiency.

Whether storing whole-blood, tissue, cellular lysates, DNA, RNA, proteins, etc, LabVantage initiates inventory control in an automated fashion. LabVantage offers intricate chain-of-custody functionality, including detailed location & shipment management, aliquot/derivative & pooled sample tracking, as well as electronic signature captured on transfer and disposition.

Moreover, as an integrated solution, LabVantage enables organizations to track the genomic and phenotypic data associated with these biospecimens under compliance with HIPAA and other privacy laws.



LABVANTAGE OVERVIEW

LabVantage Solutions, Inc. is an innovative global provider of enterprise solutions tailored for leading laboratories. We serve numerous laboratories focused on:

- Research & Discovery
- Development (including Life Sciences Pre-clinical & Clinical Development)
- Formulation & Process Research
- Raw Material Testing
- Quality Management

Our global customer base encompasses companies across multiple industries including:

- Pharmaceutical & Biosciences
- Health & Personal Care
- Food & Beverage
- Process Chemicals
- Petrochemicals
- Parts, Hardware & Equipment
- Law Enforcement & National Security
- Contract Services

LabVantage is a thin-client Laboratory Information Management Solution (LIMS) tailored to manage an organization's critical laboratory information across its worldwide R&D pipeline and manufacturing supply chain in order to optimize productivity and more effectively share knowledge.

Headquartered in Bridgewater, New Jersey, United States, LabVantage also has offices in High Wycombe, United Kingdom and Kolkata, India, and utilizes a strategic network of global business partners to provide regional sales and customer support.

LabVantage is a privately held affiliate of The Chatterjee Management Group Company, a \$1.5 billion private investment group that invests globally in infrastructure, communications and information technology companies.

LabVantage Brochure

WWW.LABVANTAGE.COM

©2011 LabVantage Solutions, Inc. All rights reserved.

For information regarding this and other LabVantage products, please contact LabVantage Solutions, Inc.:
The information contained in this document is proprietary and confidential to LabVantage Solutions, Inc. No part of this document may be reproduced or transmitted in any form or by any means, electronic or mechanical, including photocopying and recording, for any purpose, without the express written permission of LabVantage Solutions, Inc.

This document is subject to change without notice, and LabVantage does not warrant that the material contained in this document is error-free. If you find any problems with this document, please report them to LabVantage in writing. LabVantage®, Evergreen Studio™, Evergreen™, LabVantage Solutions Matrix™ and the LabVantage solution icon are trademarks of LabVantage Solutions, Inc. All other trademarks are property of their respective owners.

This document may contain statements concerning possible functionality for LabVantage software products and technology. LabVantage disclaims any express or implied commitment to deliver functionality or software unless or until generally commercially available. Any statements of possible future direction are for information purposes only, and LabVantage makes no express or implied commitments or representations concerning the timing and content of any future functionality or releases.