



User's Manual

XPert™ Filtered Balance Enclosure & Protector® XVS™ Ventilation Stations

XPert Balance Enclosures

Models

2' 3930200, 3930201, 3930202, 3930221, 3930222,
3930230, 3930231, 3930232, 3930241, 3930242

3' 3930300, 3930301, 3930302, 3930321, 3930322,
3930330, 3930331, 3930332, 3930341, 3930342

4' 3930400, 3930401, 3930402, 3930421, 3930422,
3930430, 3930431, 3930432, 3930441, 3930442

5' 3971500, 3971501, 3971502, 3971521, 3971522,
3971530, 3971531, 3971532, 3971541, 3971542
3971560, 3971561, 3971562, 3971571, 3971572

6' 3971600, 3971601, 3971602, 3971621, 3971622,
3971630, 3971631, 3971632, 3971641, 3971642,
3971660, 3971661, 3971662, 3971671, 3971672

8' 3971800, 3971801, 3971802, 3971821, 3971822
3971830, 3971831, 3971832, 3971841, 3971842
3971860, 3971861, 3971862, 3971871, 3971872

XVS Ventilation Stations

2' 4862010, 4862011, 4862012, 4862021, 4862022,
4862030, 4862031, 4862032, 4862041, 4862042

3' 4863010, 4863011, 4863012, 4863021, 4863022,
4863030, 4863031, 4863032, 4863041, 4863042

4' 4864010, 4864011, 4864012, 4864021, 4864022,
4864030, 4864031, 4864032, 4864041, 4864042

To receive important product updates,
complete your product registration card
online at **register.labconco.com**



Protecting your
laboratory environment

LABCONCO

Labconco Corporation
8811 Prospect Avenue
Kansas City, MO 64132-2696
800-821-5525, 816-333-8811
Fax 816-363-0130
E-Mail Labconco@labconco.com
Home Page www.labconco.com

The information contained in this manual and the accompanying products are copyrighted and all rights reserved by Labconco Corporation. Labconco Corporation reserves the right to make periodic design changes without obligation to notify any person or entity of such change.

Warranty

Labconco provides a warranty on all parts and factory workmanship. The warranty includes areas of defective material and workmanship, provided such defect results from normal and proper use of the equipment.

The warranty for all Labconco products will expire one year from date of installation or two years from date of shipment from Labconco, whichever is sooner, except the following;

- Purifier® Delta® Series Biological Safety Cabinets and PuriCare® Lab Animal Research Stations carry a three-year warranty from date of installation or four years from date of shipment from Labconco, whichever is sooner.
- SteamScrubber® & FlaskScrubber® Glassware Washers carry a two-year warranty from date of installation or three years from date of shipment from Labconco, whichever is sooner.
- Blood Drawing Chairs carry a ten year warranty.
- Carts carry a lifetime warranty.
- Glassware is not warranted from breakage when dropped or mishandled.

This limited warranty covers parts and labor, but not transportation and insurance charges. In the event of a warranty claim, contact Labconco Corporation or the dealer who sold you the product. If the cause is determined to be a manufacturing fault, the dealer or Labconco Corporation will repair or replace all defective parts to restore the unit to operation. Under no circumstances shall Labconco Corporation be liable for indirect, consequential, or special damages of any kind. This statement may be altered by a specific published amendment. No individual has authorization to alter the provisions of this warranty policy or its amendments. Lamps and filters are not covered by this warranty. Damage due to corrosion or accidental breakage is not covered.

Returned or Damaged Goods

Do not return goods without the prior authorization from Labconco. Unauthorized returns will not be accepted. If your shipment was damaged in transit, you must file a claim directly with the freight carrier. Labconco Corporation and its dealers are not responsible for shipping damages.

The United States Interstate Commerce Commission rules require that claims be filed with the delivery carrier within fifteen (15) days of delivery.

Limitation of Liability

The disposal and/or emission of substances used in connection with this equipment may be governed by various federal, state, or local regulations. All users of this equipment are required to become familiar with any regulations that apply in the user's area concerning the dumping of waste materials in or upon water, land, or air and to comply with such regulations. Labconco Corporation is held harmless with respect to user's compliance with such regulations.

Contacting Labconco Corporation

If you have questions that are not addressed in this manual, or if you need technical assistance, contact Labconco's Customer Service Department or Labconco's Product Service Department at 1-800-821-5525 or 1-816-333-8811, between the hours of 7:00 a.m. and 6:00 p.m., Central Standard Time.

TABLE OF CONTENTS

CHAPTER 1: INTRODUCTION	1
CHAPTER 2: PREREQUISITES	2
Support, Vibration and Movement Requirements	3
Temperature Variation Requirements	3
Humidity and Static Electricity Requirements	4
Location and Air Current Requirements	5
Exhaust and Blower Requirements	6
Remote Blowers (Roof Mounted)	7
FilterMate Portable Exhausters	8
Electrical Requirements	9
Space Requirements	9
CHAPTER 3: GETTING STARTED	10
Unpacking Your Vented Enclosure	11
Installing the Vented Enclosure on a Supporting Structure & Work Surface	11
Connecting to the Vented Enclosure Exhaust System	13
Connecting the Electrical Supply	17
Sealing the Vented Enclosure to the Work Surface	17
Validating the Vented Enclosure	17
CHAPTER 4: HIGH PERFORMANCE FEATURES AND SAFETY PRECAUTIONS	18
High Performance Features	18
Safety Precautions	24
CHAPTER 5: USING YOUR ENCLOSURE	25

CHAPTER 6: MAINTAINING YOUR ENCLOSURE	27
Routine Maintenance Schedule	28
Calibrate and Operate the Airflow Monitors	28
Guardian Jr. Airflow Monitor	28
Guardian Jr. Component Identification	29
Guardian Jr. Installation Procedure	30
Guardian Jr. Calibration Procedure	32
Guardian Jr. Alarm Activation	34
Guardian Jr. Alarm Test	34
Guardian Digital 1000 Operation	34
Guardian Digital 1000 Installation Procedure	34
Digital 1000 Calibration	36
CHAPTER 7: ACCESSORIZING YOUR ENCLOSURE	38
Work Surfaces	40
Guardian Digital Airflow Monitor or Guardian Jr.	40
Fluorescent Light Kit	40
Exhaust Transition Adapters	41
Remote Blowers	41
Exhaust Dampers	42
FilterMate Portable Exhausters and Filters	42
Storage Cabinets	43
Utility Shelf Kit	44
Hose, Hose Clamps and Hose Kits	44
CHAPTER 8: TROUBLESHOOTING	46
APPENDIX A: REPLACEMENT PARTS	47
APPENDIX B: DIMENSIONS	51
APPENDIX C: SPECIFICATIONS	55
DECLARATION OF CONFORMITY	56

Chapter 1: Introduction

Congratulations on your purchase of a Labconco XPert™ Balance Enclosure or Protector® XVS™ Ventilation Station. Your high performance enclosure is designed to protect you by providing superior containment while conserving energy at OSHA approved “low flow” velocities as low as 60 feet per minute. It is the result of Labconco’s more than 50 years experience in manufacturing fume hoods.

The XPert Balance Enclosure or Protector XVS Ventilation Station has been engineered to provide maximum containment. It will effectively contain toxic, noxious, or other harmful materials when properly installed. The XPert or XVS offers many unique features to enhance safety, performance, and energy savings. To take full advantage of them, please acquaint yourself with this manual and keep it handy for future reference. If you are unfamiliar with how high performance vented enclosures operate, please review Chapter 4: High Performance Features and Safety Precautions before you begin working in the enclosure. Even if you are an experienced user, please review Chapter 5: Using Your Vented Enclosure, which describes the XPert or XVS features so that you can use the vented enclosure efficiently.

Chapter 2: Prerequisites

Before you install the vented enclosure, you need to prepare your site for installation. Carefully examine the location where you intend to install the vented enclosure. You must be certain that the area is level and of solid construction. In addition, a dedicated source of electrical power should be located near the installation site to power the accessory FilterMate Portable Exhauster, balance or other apparatus. Additionally, a balance should be strategically placed in the lab to provide efficient workflow.

Carefully read this chapter to learn the requirements for your installation site:

- The support, vibration and movement requirements.
- The temperature variation requirements.
- The humidity and static electricity requirements.
- The location and air current requirements.
- The exhaust and blower requirements.
- The electrical power requirements.
- The space requirements.

Refer to Appendix B: XPert/XVS Dimensions for complete enclosure dimensions.

Refer to Appendix C: XPert/XVS Specifications for complete vented enclosure electrical and environmental conditions, specifications and requirements.

Support, Vibration and Movement Requirements

At a minimum, the supporting structure usually consists of a base cabinet and chemically resistant work surface.

XPert and XVS:

- When setting up a chemical station not used for weighing powders, a mobile stand or cart is allowable.

The ability for analytical balances to accommodate vibration varies with type and brand. More advanced balances have improved reliability, however in the preparation of a balance enclosure site, please consider the following:

- Avoid tubular stands or carts that have the potential of moving when touched.
- Work surfaces should be of a thick rigid material that remains stable when buttons are pressed. An epoxy benchtop or accessory work surface is a minimum requirement.
- A bench that is rigidly mounted to the floor or fixed to the wall, but not both, may be appropriate.
- The corners of a building typically have less vibration than the center.
- The bench with the balance enclosure should not contain any vibration-producing equipment, such as shakers or pumps.
- Marble, granite or epoxy balance tables are generally recommended by the manufacturers of analytical and microbalances. (See the installation instructions in Chapter 3).
- Marble slabs within the balance enclosure with dampening pads are also an effective low cost means of controlling vibration.

Temperature Variation Requirements

XPert:

The extent the balance readings are influenced by temperature variations is a function of the balance design. Most manufacturers would suggest that a temperature drift of 1-2°C is generally tolerable. Only validation through your Operational Qualification protocol can define what is acceptable. To minimize the potential for temperature variations:

- Never install balances near heating sources such as radiators and hot plates.
- Avoid incandescent lighting of the enclosure where radiant heat produced will raise temperatures. (See Chapter 7 for adding an accessory fluorescent light kit).
- Do not place the balance and enclosure on a bench that would receive direct sunlight.

Humidity and Static Electricity Requirements

XPert:

Electrostatics can be troublesome in a balance enclosure. It is important to understand and, to the extent possible, control static charges. An electrostatic charged vessel, sample or enclosure can apply forces and lead to errors in weighing. The repulsion or attraction can be detected with micro, semi micro and analytical balances. Static charges can also lead to particulates being attracted to surfaces within the balance enclosure. Containment of harmful powders, prevention of cross-contamination and clean up is all enhanced when static attraction of powders is minimized. The construction of the XPert Balance Enclosure avoids the use of plastics, which are highly insulative. The advantages to the glass and epoxy-coated metal construction are twofold.

1. The enclosure does not contribute high electrostatic forces affecting the precision of the balance.
2. The attraction and ultimate accumulation of powders, (hazardous or nuisance), are minimized on the inside of the enclosure.

To correct or ensure against electrostatic issues, the following additional measures may be prescribed to improve weighing operations.

- Maintain a humidity level between 45 and 60%. The ability to sustain this humidity range can be challenging depending upon the regional climate and HVAC system.
- Ionizers in various forms (guns, bars and blowers) are effective ways to flood an area with ions and essentially “neutralize” electrostatic electricity.

Background on Electrostatics or Static Electricity

Electrostatic charges on a surface such as the wall of a balance enclosure are not created by moving air. Gases do not cause the charge. Impurities within the air impinging upon surfaces dictate the polarity and magnitude of the charge. The process, triboelectrification, occurs when the friction of the dust particles contact the surface and electrons move across the interface.

The ability of a material to become polarized is a property known as permittivity. On highly insulative materials like acrylic, ions or charged molecules are strongly bound to the surface by polarization forces. The higher the force, the higher is the permittivity value of the material. It is suggested that the use of high permittivity materials, such as plastic be avoided.

Since static electricity is a surface phenomenon, materials can also be classified by their surface resistivity measured in ohms per square. The table below lists the surface resistivity of various classes of material.

Surface Resistivity Table

Material	Surface Resistivity	Example
Conductive	$0 \rightarrow 10^5 \Omega$ per square	Skin, Metals
Static dissipative	$10^5 \rightarrow 10^9 \Omega$ per square	Glass
Antistatic	$10^9 \rightarrow 10^{12} \Omega$ per square	Polyethylene bag
Insulative	$10^{12} \Omega$ per square \rightarrow	Acrylic, Packing foam, Styrofoam

Location and Air Current Requirements

The XPert Balance Enclosure and XVS Ventilation Station both have been designed to contain hazards by negating typical cross drafts and movements within the opening. Air movement does not affect most modern balances with draft shields. However, as a precautionary measure of safety and a higher level of quality management, it is recommended that the enclosure be placed in such an area to avoid:

- High traffic areas where walking might cause an air disturbance or be a nuisance to balance readings.
- Overhead or wall HVAC diffusers, fans, radiators or other lab equipment producing air currents.
- Next to doorways or windows that may be opened.

Exhaust and Blower Requirements

The exhaust connection has been designed to accept a 2" x 10" (5.1cm x 25.4cm) nominal exhaust collar. The enclosure has two possible exhaust connections with either the top exhaust open and the bottom exhaust closed or vice versa. The bottom exhaust connection is primarily used in installations where the hose or ductwork needs to be concealed. Labconco offers accessory transition adapters for the top or bottom exhaust connection to either a 5" hose or 6" duct. See Chapter 7 for ordering any of these accessories. For house exhaust, only one exhaust connection is required for the 2' through 6' enclosures and two exhaust connections are required on the 8' enclosure. Data for the exhaust volume and enclosure static pressure loss are listed for each enclosure model at face velocities of 60, 80 and 100 fpm. When using the accessory FilterMate Portable Exhausters, it requires the 5" Transition Adapter 3912400, which is sold with the FilterMate. Multiple FilterMate Portable Exhausters require the airflow to be properly balanced. The 5', 6' and 8' enclosures require two or three FilterMate Portable Exhausters dependent on face velocity and size.

Enclosure Width	Enclosure Height	Model Description	Face Velocity (fpm)	Exhaust Volume (CFM)	Static Pressure Loss (in w.g.)	Number of Required FilterMates
2'	22.75" 8" Sash	2' XPert/2' XVS	60	70	.02"	1
			80	95	.03"	1
			100	120	.05"	1
3'	22.75" 8" Sash	3' XPert/3' XVS	60	110	.04"	1
			80	145	.06"	1
			100	185	.10"	1
4'	22.75" 8"	4' XPert/4' XVS	60	150	.06"	1
			80	200	.10"	1
			100	250	.16"	1
2'	32" 10" Sash	Tall 2' XPert/2' XVS	60	90	.03"	1
			80	120	.05"	1
			100	150	.08"	1
3'	32" 10" Sash	Tall 3' XPert/3' XVS	60	140	.06"	1
			80	185	.10"	1
			100	230	.15"	1
4'	32" 10" Sash	Tall 4' XPert/4' XVS	60	185	.09"	1
			80	250	.16"	1
			100	310	.24"	N/A
5'	22.75" 8" Sash	5' XPert	60	190	.08"	1
			80	250	.15"	1
			100	315	.23"	2
6'	22.75" 8" Sash	6' XPert	60	230	.12"	1
			80	305	.21"	2
			100	380	.32"	2
8'	22.75" 8" Sash	8' XPert	60	310	.07"	2
			80	410	.12"	2
			100	510	.18"	3
5'	32" 12" Sash	Tall 5' XPert	60	290	.20"	2
			80	385	.35"	2
			100	480	.54"	3
6'	32" 12" Sash	Tall 6' XPert	60	350	.27"	2
			80	465	.48"	3
			100	580	.75"	3
8'	32" 12" Sash	Tall 8' XPert	60	465	.15"	3
			80	620	.27"	3
			100	775	.42"	3

Proper blower selection can be determined from these exhaust requirements and the total system static pressure loss. The enclosure must be connected to a dedicated blower, a house exhaust system or a dedicated filtered exhauster, such as a Labconco FilterMate. When using multiple FilterMates, the airflow must be balanced.

Labconco offers accessory remote blowers listed next and in Chapter 7.

Remote Blowers (Roof-Mounted)

A). 1/4 hp direct drive. Corrosion-resistant epoxy-coated steel housing and wheel. Blower inlet is 6" ID. Outlet dimensions are a rectangular 4.25" x 7.38" OD. See dimensional data in Chapter 7.

CFM @ Static Pressure – Inches of H ₂ O						
S.P.	0.0"	0.125"	0.25"	0.50"	0.75"	0.87"
CFM	595	560	515	420	300	167

Catalog #	Description	Shipping Wt. lbs./kg
4863500	Remote Blower, 115 volts, 60 Hz, 4.4 amps	35/16
4863501	Remote Blower, 115/230 volts, 50 Hz, 5.6/2.8 amps	35/16
7053501	Explosion-Proof Remote Blower, 115 volts, 60 Hz, 4.4 amps	40/18

B). 1/4 hp or 1/3 hp belt drive with adjustable sheave to change RPM. Corrosion-resistant epoxy-coated steel housing and wheel. Blower inlet is 10.87" ID. Outlet dimensions are a rectangular 5.5" x 10" OD. See dimensional data in Chapter 7.

Catalog #		HP	Description	CFM@RPM Ranges at Static Pressure (in H ₂ O)						
Std.	EP			.25"	.38"	.50"	.62"	.75"	.88"	1.00"
7068200		1/4	Remote Blower, 115V, 60 Hz, 4.4 A	540@800	410@800	350@870	390@970	430@1060		
	7068300	1/4	Explosion Proof Blower 115V, 60 Hz, 4.5 A	720@950	760@1050	710@1060	620@1060			
7068400		1/3	Remote Blower, 115V, 60 Hz, 6.1 A		760@1050	710@1060	620@1060	430@1060	460@1150	500@1220
	7068500	1/3	Explosion Proof Blower, 115V, 60 Hz, 6.4 A		850@1130	825@1160	790@1190	770@1220	740@1260	640@1260

If the enclosure is connected directly to a house exhaust system, an adjustable damper (or valve) must be installed to control the airflow properly. This is equally important when a house exhaust system is controlling multiple balance enclosures or ventilation stations. See Chapter 7 for ordering an accessory adjustable damper.

FilterMate Portable Exhausters (Filtered Room Exhaust or Outside)

For filtered exhauster selection, Labconco offers FilterMate Portable Exhausters capable of exhausting up to 280 cfm of HEPA filtered air or up to 220 cfm of combination HEPA/Carbon filtered air. These airflows are possible when connected to the enclosure with 8' of 5" diameter hose. HEPA and Carbon filters are available and detailed below, as well as in Chapter 7. For airflows greater than these listed use multiple FilterMates. Labconco offers FilterMate Portable Exhausters listed below and in Chapter 7.

FilterMate Portable Exhausters

Catalog Number	Voltage	Filter	Exhaust Airflow (cfm)	Exhaust Connection
3970000	115 Volt/60 Hz	HEPA	280	None
3970001	115 Volt/60 Hz	Carbon	280	None
3970002	115 Volt/60 Hz	HEPA	280	Canopy to outside
3970003	115 Volt/60 Hz	HEPA/Carbon	220	None
3970004	115 Volt/60 Hz	Carbon/Carbon	220	None
3970020	230 Volt/50 Hz	HEPA	280	None
3970021	230 Volt/50 Hz	Carbon	280	None
3970022	230 Volt/50 Hz	HEPA	280	Canopy to outside
3970023	230 Volt/50 Hz	HEPA/Carbon	220	None
3970024	230 Volt/50 Hz	Carbon/Carbon	220	None

If the outlet of the FilterMate Exhauster is connected to the house exhaust system it is recommended that 3970002 (115 Volt) or 3970022 (230 Volt) be ordered as a thimble connection is built into the exhaust with a 6" nominal exhaust.

HEPA Filter

Part #3707900 is 99.99% efficient for particles 0.3 micron.

HEPA Filter with Bag-In/Bag-Out Bag

Part #3779002. Helps contain particulate matter during filter changing operations.

Carbon Filters

Provides granular activated carbon or treated carbon.

Filter Classification	Part #	Carbon lbs.
Organic Vapors	3923400	12# activated
Formaldehyde	3923401	14# treated
Ammonia	3923402	16# treated

Electrical Requirements

Standard duplex electrical receptacles should be nearby for connecting the FilterMate Portable Exhauster, an airflow monitor, accessory fluorescent light or other equipment, such as a balance for weighing operations. For your convenience both the accessory FilterMate and accessory fluorescent light kit have auxiliary outlet receptacles. It is recommended that the airflow monitor be connected directly to the auxiliary switched outlet on the rear of the FilterMate so the airflow monitor is ON when the blower is ON. The FilterMate auxiliary switched outlet is rated for 8 amps. For other blower exhaust systems, it is recommended that the airflow monitor be switched by the same circuit as the blower exhaust. If this is not possible, then the airflow monitor may be connected to the switched auxiliary outlet on the accessory fluorescent light kit. The fluorescent light kit auxiliary outlet can be used for any accessory under 8 amps.

Space Requirements

The dimensions for the different models are shown in Appendix B: Enclosure Dimensions.

Chapter 3: Getting Started

Now that the site for your XPert or XVS vented enclosure is properly prepared, you are ready to unpack, inspect, install, and validate your system. Read this chapter to learn how to:

- Unpack and move the enclosure.
- Set up the enclosure with the proper supporting structure and work surface.
- Connect to an exhaust system.
- Connect the electrical supply.
- Seal the enclosure to the work surface.
- Arrange validation for the enclosure.

Depending upon which model you are installing, you may need common plumbing and electrical installation tools in addition to 5/16", 3/8", 7/16", and 1/2" wrenches, ratchets, sockets, a nut driver set, a flat-blade screwdriver, a Phillips screwdriver, and a carpenter level to complete the instructions in the chapter.

Note: The enclosure models weigh between 50 to 200 lbs. each (22 to 90 kg). The shipping container allows for lifting with a mechanical lift truck or floor jack. if you must lift the enclosure manually, follow safe-lifting guidelines. Do not lift by the front Air Foil.

Unpacking the Enclosure

Carefully remove the shrink-wrap or carton on the enclosure and inspect it for damage that may have occurred in transit. If damaged, notify the delivery carrier immediately and retain the entire shipment intact for inspection by the carrier.

- Do not return goods without the prior authorization of Labconco. Unauthorized returns will not be accepted.
- If enclosure was damaged in transit, you must file a claim directly with the freight carrier. Labconco Corporation and its dealers are not responsible for shipping damages.
- The United States Interstate Commerce Commission rules require that claims be filed with the delivery carrier within fifteen (15) days of delivery.
- Do not discard the packing material until you have checked all of the components and tested the unit.
- We recommend that you do not remove the enclosure from its shipping container until it is ready to be placed into its final location. Move the unit by placing a flat, low dolly under the shipping skid, or by using a floor jack.

NOTE: DO NOT MOVE THE ENCLOSURE BY TILTING IT ONTO A HAND TRUCK.

Install the Enclosure on a Supporting Structure and Work Surface

Note: Use caution when lifting or moving the enclosure.

When installing the enclosure onto a work surface or benchtop, ensure that the structure can safely support the combined weight of the enclosure and any related equipment. The work surface should be at least as wide as the enclosure to properly support it. The front of the enclosure should be aligned within 1/8" of the front of the work surface. Mounting holes are provided in the Labconco accessory work surfaces to secure the enclosure.

Work Surface Specifications

The work surface should be smooth, rigid, and durable, such as a chemically resistant epoxy resin or stainless steel. The surface should be non-porous and resistant to the acids, solvents and chemicals used in conjunction with the XPert or XVS enclosure. The work surface should also contain a dished recessed area for containing primary spills.

Work Surface and Vented Enclosure Installation

1. Level the base cabinets and the work surface. Work surface should be placed flush with the front of the base cabinet as shown in Figure 3-1.
2. Position the work surface in its intended location and with the front of the work surface, (wide flange or spill trough), towards you.
3. Secure the work surface to the base cabinet with a structural adhesive or silicone sealant.
4. Insert the supplied mounting screws in the four holes for epoxy work surfaces. For stainless steel work surfaces use #10-24 x 3/8" hex machine screws. (Labconco P/N 1885806). Allow a minimum of 1/8" clearance under the head of the screw for positioning the enclosure.
5. Place the enclosure on the work surface and slide the rear flange and front air foil flanges under the mounting screw heads.
6. Tighten the four screws to complete the installation.

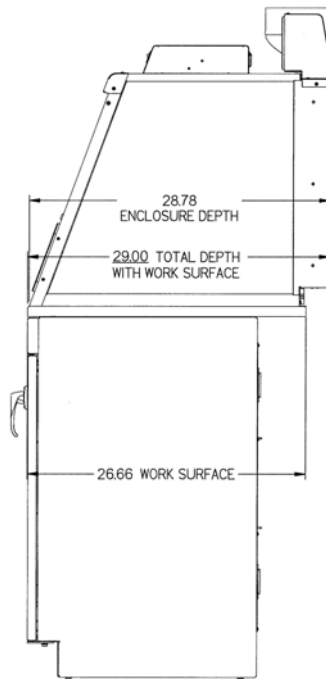


Figure 3-1
Side View of Typical Installation

Connecting to the Vented Enclosure Exhaust System

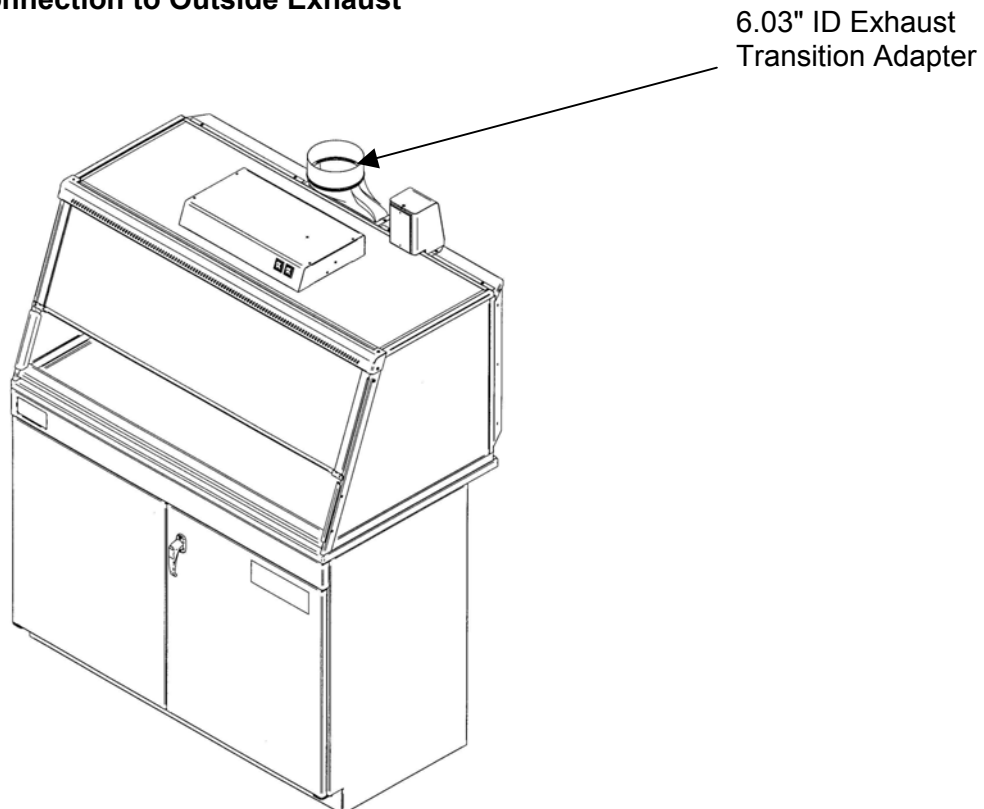
WARNING: The weight of the exhaust ductwork system must be supported independently of the enclosure superstructure or damage may occur.

The exhaust system should be installed by a qualified HVAC contractor.

The exhaust connection on the 2' through 6' enclosures has been designed to accept a 2" x 10" (5.1cm x 25.4cm) nominal transition adapter. The 8' enclosure has two 2" x 10" connections. See Chapter 7 for ordering accessory transition adapters. Labconco manufactures transition adapters for either top or bottom exhaust and for both 5" dia. hose or 6" dia. duct. Review Chapter 2 for remote blower and FilterMate Portable Exhauster exhaust prerequisites and review Chapter 7 for ordering blower exhaust equipment. For your convenience several exhaust options are shown in Figures 3-2, 3-3, 3-4 and 3-5. Consult Labconco Customer Service should you require help sizing your blower for the exhaust volume and system static pressure loss.

To ensure compatibility, the selected exhaust duct material should match the enclosures, procedures and chemical applications.

Figure 3-2 Top Connection to Outside Exhaust



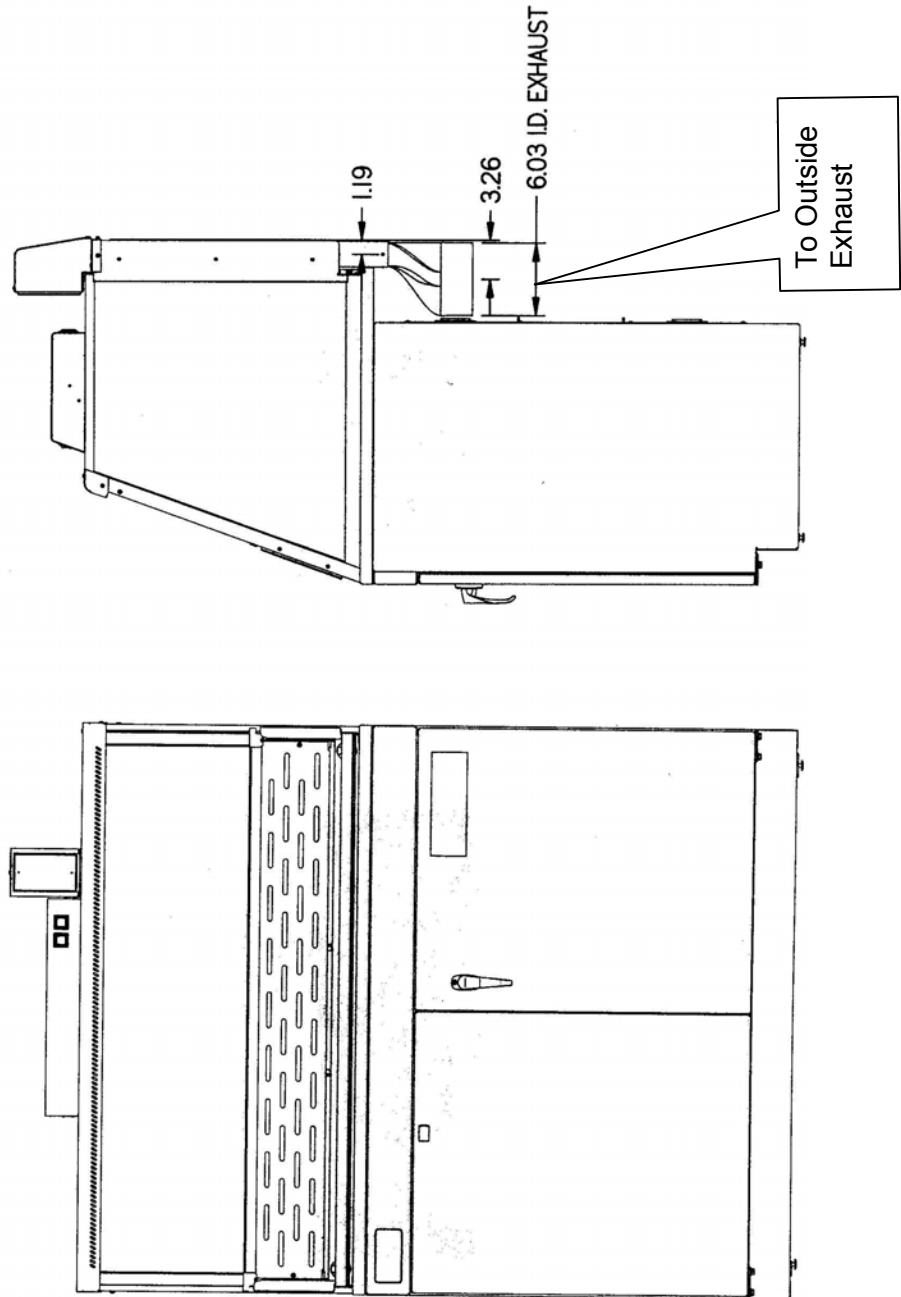


Figure 3-3
Front View and Side View of Concealed Bottom Connection to Outside Exhaust

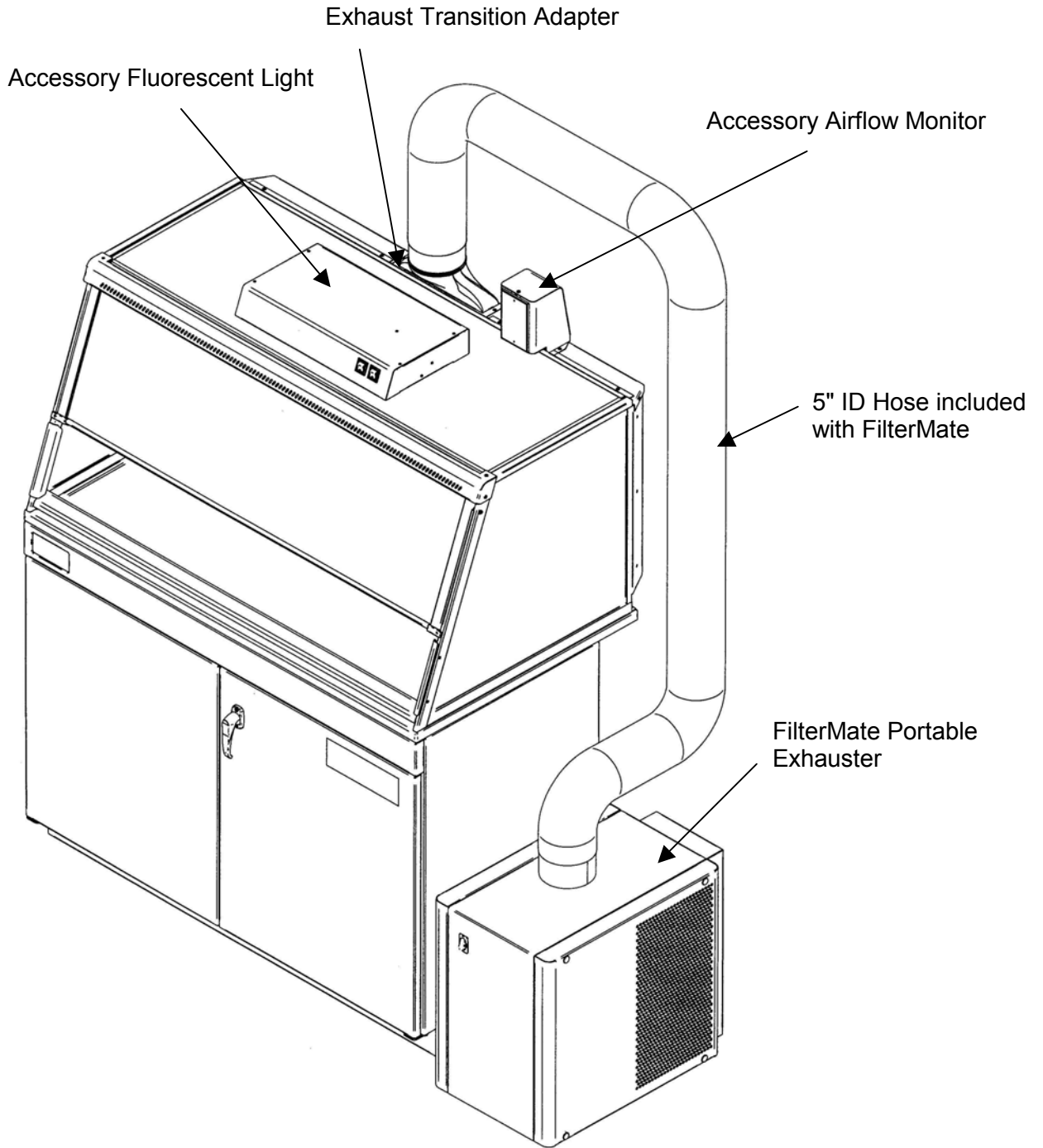
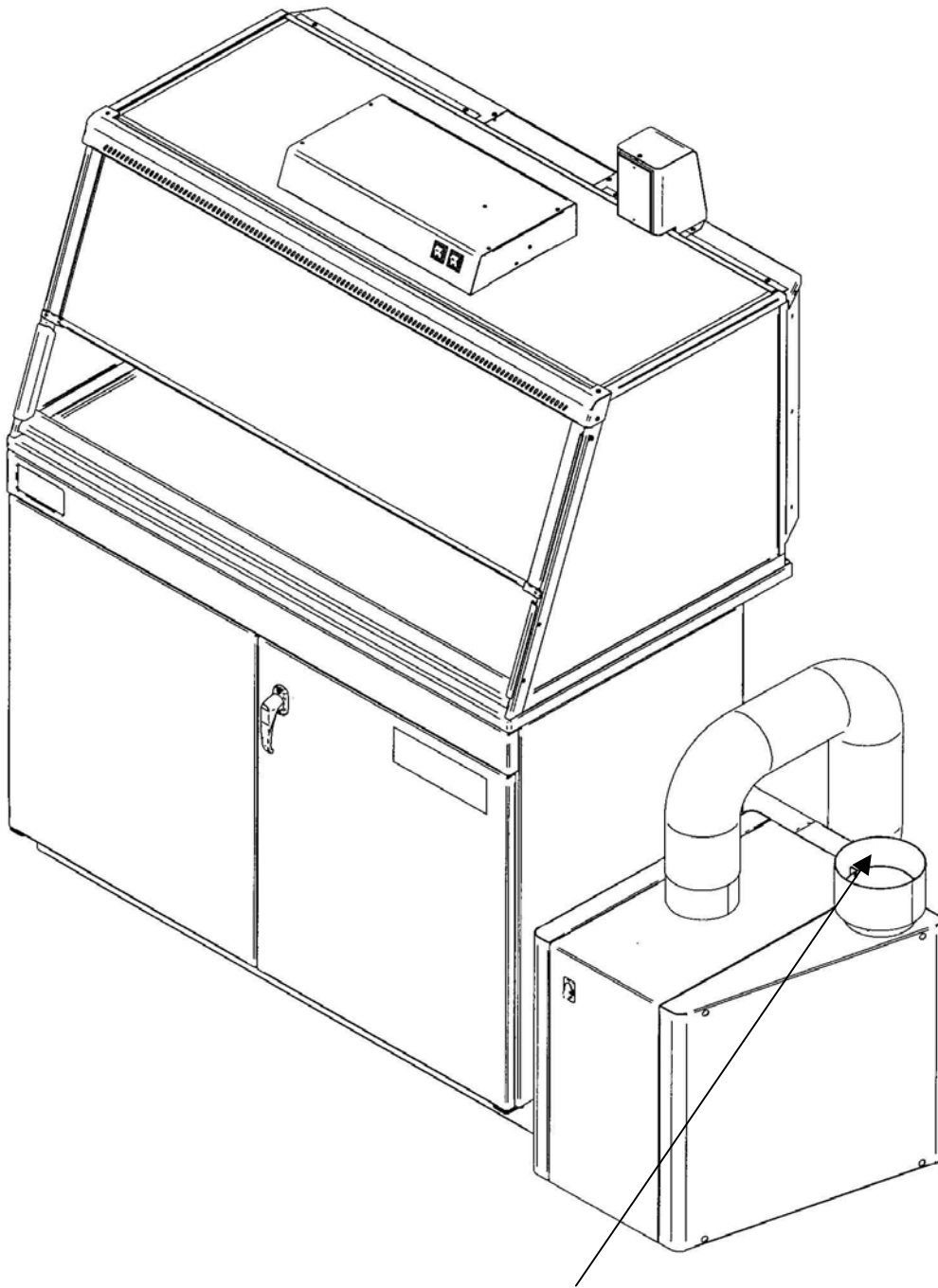


Figure 3-4
Top Connection to FilterMate Portable Exhauster Exhausted to Room



To Outside Exhaust Via Thimble Connection (6" nominal)

Figure 3-5
Concealed Bottom Connection to FilterMate With Outside Thimble Exhaust Connection

Connecting the Electrical Supply

A standard duplex receptacle should be nearby for connecting the FilterMate Portable Exhauster, airflow monitor and accessories. Please review Chapter 2 for electrical prerequisites.

ALL WIRING FOR THE BUILDING DUPLEX OUTLETS SHOULD BE PERFORMED BY A LICENSED ELECTRICIAN AND CONFORM TO ALL LOCAL CODES.

Sealing the Vented Enclosure to the Work Surface

When the enclosure has been set in place, ducted and wired, it may be sealed at the work surface to prevent spilled materials from collecting under the walls. A bead of silicone sealant is recommended to seal the enclosure to the work surface.

Validating the Vented Enclosure

The exhaust damper ductwork, exhaust blower or FilterMate gives you the flexibility to change the airflow at the sash opening of your enclosure. To determine the actual face velocity at the sash opening, airflow velocity readings will need to be taken. This should be done across the sash opening of the enclosure in accordance with the Industrial Ventilation Manual. (See Appendix D) The “average face velocity” is achieved by taking readings in two rows across the enclosure with the readings 6" from the ends and evenly spaced every 12"; the first row is 3" down from the upper sash foil and the second row is 3" up from the work surface. Labconco recommends an average face velocity at the sash opening of 60 to 100 feet per minute for high performance XPert and Protector XVS enclosures. Refer to Chapter 2 for proper airflow volumes for your particular model.

Your XPert or XVS enclosure has been tested at the factory per ASHRAE 110-1995. All enclosures achieve an “as manufactured rating” of less than 0.05 part per million (ppm) at 4 liters per minute (lpm); AM <0.05 (Consult Labconco for individual ratings). For “field use” ASHRAE testing contact Labconco for a certified on-site contractor. For additional validation, Labconco had independent testing performed to validate the enclosures for sodium naproxen powder containment. Labconco also had independent ASHRAE testing performed to validate the enclosures for gas containment. For copies of these independent validation reports, contact Labconco Customer Service.

NOTE: Face velocity profiles and smoke testing should be performed frequently per your organizations quality system to ensure safe performance.

Chapter 4: High Performance Features and Safety Precautions

High Performance Features:

The patented (U.S. Patent No. 6,461,233) XPert Balance Enclosure and Protector XVS Ventilation Station are designed to meet the needs of the laboratory scientist, and provide superior containment while conserving energy at OSHA approved “low flow” velocities as low as 60 feet per minute. The XPert/XVS Enclosure has been designed to effectively contain toxic, noxious, or other harmful materials when properly installed and operated. What makes the XPert/XVS Enclosure so unique is the revolutionary way it directs air into and through the contaminated air chamber. Labconco engineered the XPert/XVS to minimize the effects of turbulence. The containment enhancing and aerodynamic designs of the upper sash foil, side air foils, lower air foil, upper dilution air supply, and rear perforated baffle all work in concert to produce horizontal airflow patterns that significantly reduce both powder and chemical concentrations through the work area. These concentrations of materials are predominantly removed on the “first pass” of airflow through the chamber resulting in high performance containment.

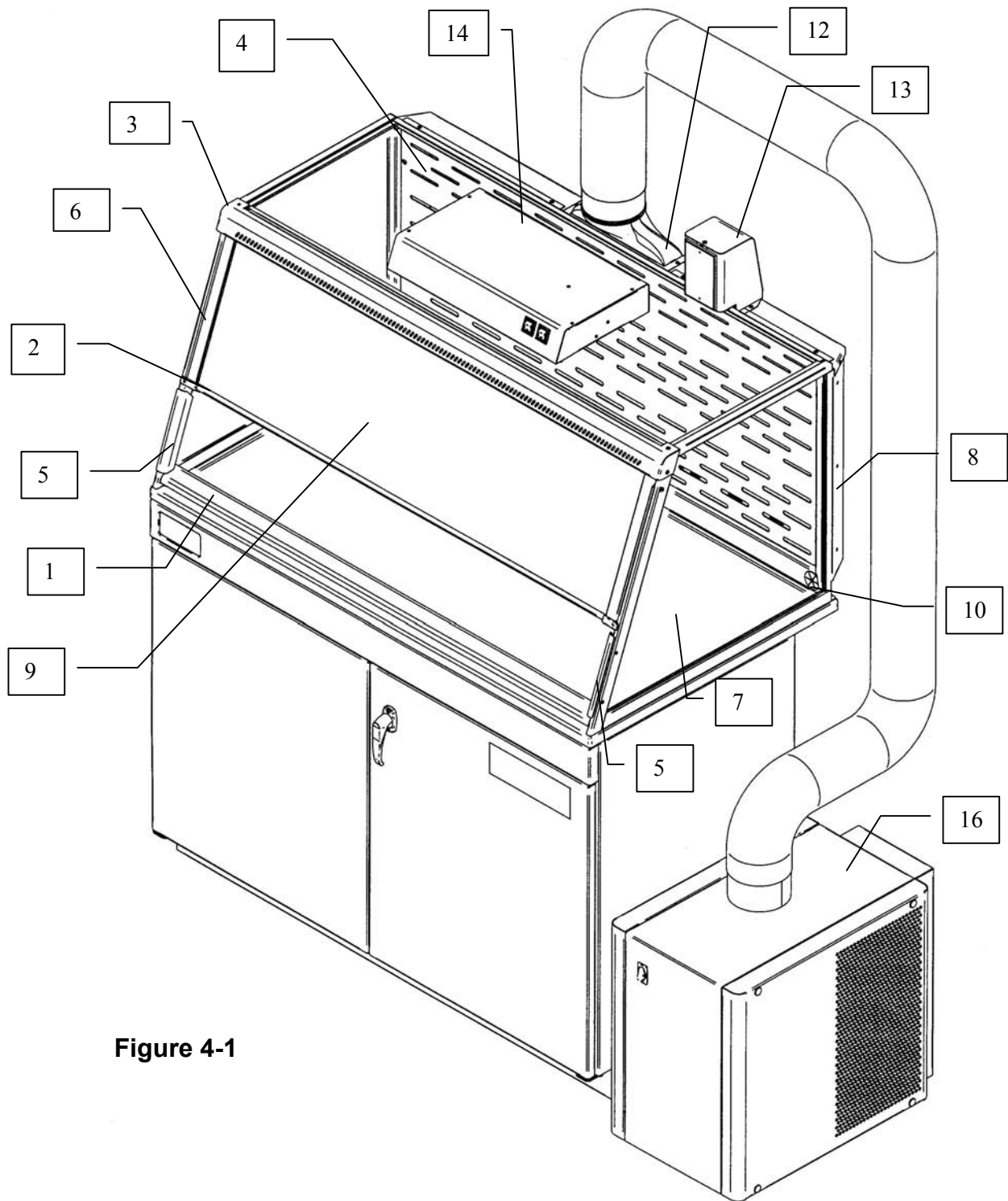
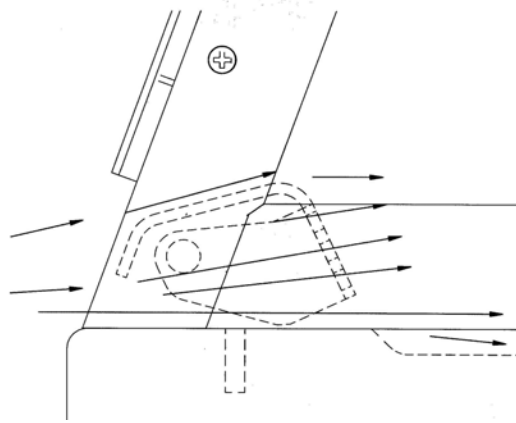


Figure 4-1

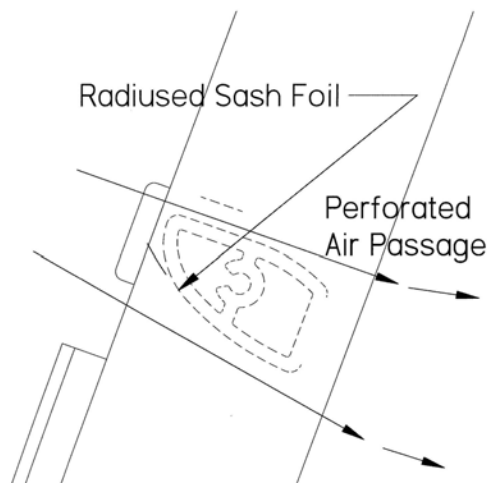
1. **Aerodynamic Clean-Sweep™ Air Foil** has a unique low profile shape that allows air to sweep the work surface for maximum containment. The Clean-Sweep™ openings create a constant protective barrier from contaminants. In addition, should the operator inadvertently block the airflow entering the airfoil, air continues to pass under the air foil and through the Clean-Sweep openings. See Figure 4-2.

Figure 4-2



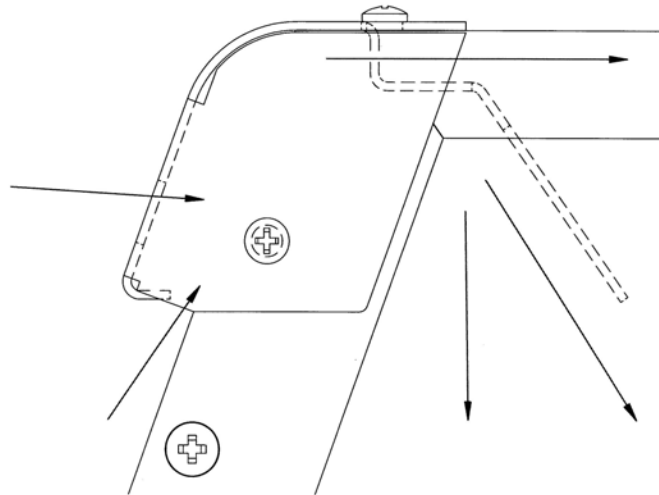
2. **Containment-Enhancing Upper Sash Foil** includes a perforated air passage directly atop the sash foil to bleed air into the hood chamber and direct chemical and powder concentrations away from the sash opening. The radiused sash foil sweeps airflow into the hood with minimal turbulence. See Figure 4-3.

Figure 4-3



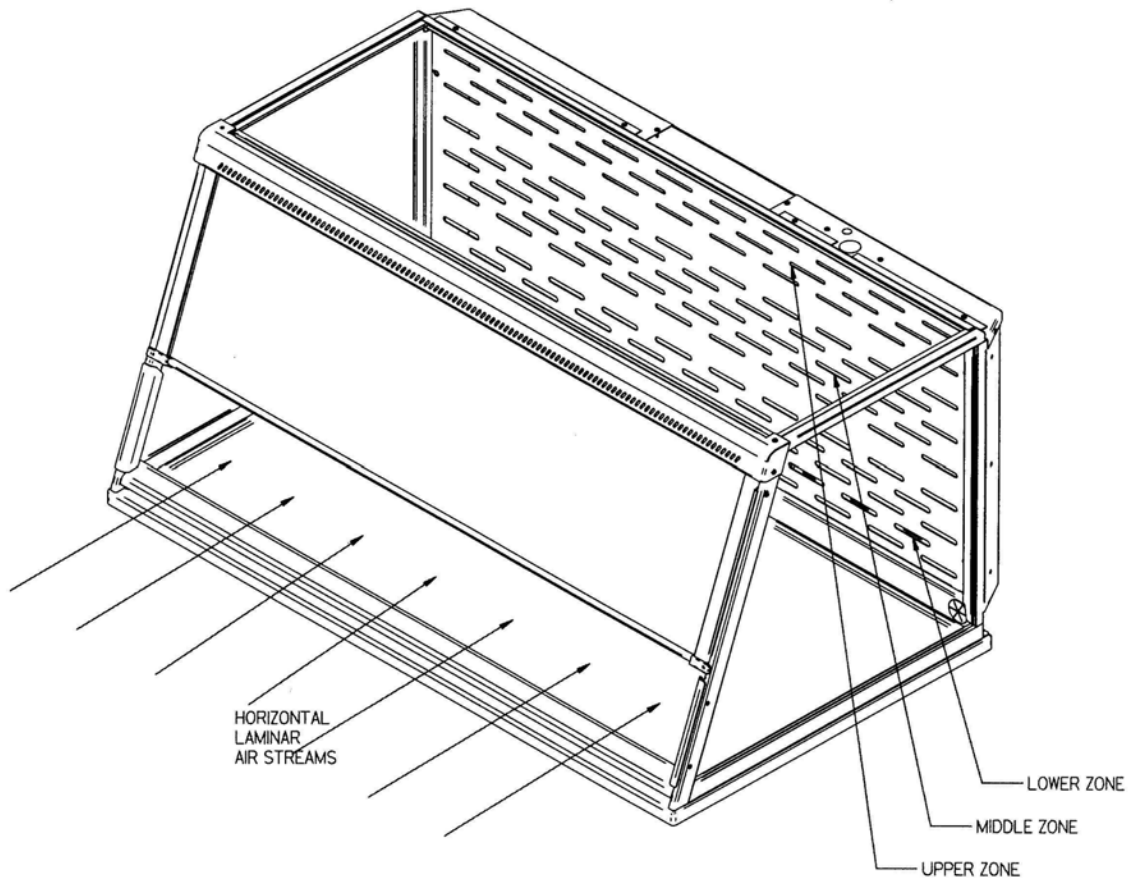
3. **Upper Dilution Air Supply** provides bypass air from above the work area. This feature constantly bathes the sash interior with clean air and reduces powders and chemical fumes along the sash plane, near the critical breathing zone. Five to seven percent of the required air volume is introduced through the upper dilution air supply to ensure maximum containment. Additionally, the upper dilution air supply reduces stagnant pockets of air in the upper interior. See Figure 4-4.

Figure 4-4



4. **Zoned Rear Perforated Baffle** directs horizontal laminar air streams to the three-zoned sections of the perforated baffle in a single pass. The three-zoned sections have increasingly more airflow at the bottom that helps form the laminar airflow. This smooth horizontal flow minimizes the potential for air to roll forward preventing contamination from moving toward the sash opening. The concentrations of materials are largely removed on the first pass through the contaminated chamber. The zoned rear perforated baffle may be removed or tilted down for cleaning. See Figure 4-5.

Figure 4-5



5. **Side Entry Air Foils** allow turbulence free air to enter the enclosure from the sides and allow clean air to sweep the interior walls of the enclosure.
6. **Ergonomic Slope** provides maximum visibility, and comfort reduces glare, thereby minimizing operator fatigue.
7. **Internal Depth of 23"** provides necessary depth to support modern balances and other auxiliary equipment without extending outside the enclosure or resting on the lower air foil.
8. **Two Enclosure Heights and Depths** available as standard enclosures in 22.75" or 32". Taller height XVS enclosures are typically used for pipet operations, titration or taller auxiliary equipment. Unit depth of 29" is available on 2' through 8' enclosures and 35.5" depth is available on 5', 6', and 8' enclosures.
9. **Unique Flush Sash** has a wiping seal to contain contaminants and features a spring-loaded latch or gas spring for loading auxiliary equipment. The sash pivots down for normal operation.

10. **Electrical Pass through Iris** allows electrical cords and data cords to pass through the back of enclosure without leaving a large hole for contaminants to escape. The unit ships with solid plugs and the iris plugs are included with the instruction manual for your convenience.
11. **Shipped fully assembled** to eliminate the need for costly onsite assembly. Accessories such as the exhaust transition connections, work surfaces, airflow monitors and fluorescent light kits are easily installed.
12. **Accessory Exhaust Connections.** The XPert/XVS enclosures feature two exhaust locations: One is located on the top of the rear plenum and the other is located on the bottom of the rear plenum. Exhaust transition connectors are available for either a 6" OD outside exhaust or a 5" ID hose; 5', 6' and 8' enclosures have multiple exhaust connections. All exhaust transition connectors are reviewed in Chapters 2 and 3 and accessories displayed for order in Chapter 7.
13. **Accessory Guardian™ Airflow Monitor or Guardian Jr. Monitor** continuously monitors airflow. An audio/visual alarm alerts the user to low airflow conditions. The Guardian™ Digital Airflow Monitor also displays a face velocity value, provides an RS232 output, a night setback mode and several auxiliary relay ports. See Chapter 7 for ordering information.
14. **Accessory Fluorescent Light Kits** provide excellent illumination with an auxiliary outlet plug for supplying power to auxiliary equipment such as a balance or printer. See Chapter 7 for ordering information.
15. **Accessory Roof-Mounted Blower** sized to provide adequate airflow to XPert/XVS enclosures when used with an exhaust damper. See Chapters 2, 3 and 7.
16. **Accessory FilterMate Portable Exhauster** provides up to 280 cfm for HEPA filtration or up to 220 cfm for combination HEPA/Carbon filtration when connected to XPert/XVS enclosures. Multiple FilterMates must be balanced and can be used on 5', 6' and 8' units with multiple exhaust connections. See Chapters 2, 3 and 7.

Safety Precautions

Although the enclosure has been engineered to maintain optimum operator safety, caution should always be used while working. Prior to using the enclosure, check to make sure that the exhaust blower is operating and that air is entering the enclosure at its specified face velocity. The use of an airflow monitor is recommended to alert the user if there is a problem with airflow.

Use good housekeeping in the hood at all times. Clean up spills immediately. Periodically clean enclosure interior.

Do not overload the work surface with apparatus or work material. The safe operation of the enclosure is based upon having proper airflow through the structure. Do not place large, bulky objects such as block heaters, directly on the work surface. Instead, elevate the object 3/4" on blocks to allow a flow of air under the object and into the rear baffle exhaust slots. Ensure blocks are level and secured in place.

Blocking large portions of the rear baffle will change the airflow pattern in the enclosure causing turbulence. (Do not store containers or supplies against the rear baffle, as this will affect airflow).

Always work with your hands as far back in the enclosure as possible. It is best to keep all powders, chemicals and apparatus inside the lower air foil of the enclosure.

Do not work with chemicals in this enclosure without the exhaust system running.

Perchloric acid use in this enclosure is prohibited.

High-level radioisotope materials are prohibited in this enclosure.

Avoid cross drafts and limit traffic in front of the enclosure. Air disturbances created may draw contaminants out of the enclosure.

A qualified certification technician should test the XPert Balance Enclosure or Protector XVS Ventilation Station before it is initially used. The enclosure should be validated whenever it is relocated, serviced or at least annually thereafter.

The use of safety goggles, protective clothing, gloves and any other personal protective equipment recommended by your safety officer should be used.

The sash should remain in the down position while using the enclosure.

Proper operation of the enclosure depends largely upon its location and the operator's work habits. Consult the references in Appendix D.

Chapter 5: Using Your Xpert Balance Enclosure or Protector XVS Ventilation Station

Planning

- Thoroughly understand procedures and equipment required before beginning work.
- Arrange for minimal disruptions, such as room traffic or entry into the room while the enclosure is in use.

Start-up

- Turn on exhaust system and accessory light if so equipped.
- Only raise the sash for loading.
- Check the baffle air slots for obstructions.
- Allow the enclosure to operate unobstructed for 1 minute.
- Wear a long sleeved lab coat and rubber gloves. Use protective eyewear. Wear a protective mask if appropriate. Consult your Safety Officer for additional personal protective equipment recommendations.

Loading Materials and Equipment

- Only load the materials required for the procedure. Do not overload the enclosure.
- Do not obstruct the air foil, or rear baffle slots.
- Large objects should not be placed close together and should be elevated above the work surface to permit airflow to sweep under the equipment.
- After loading, wait one minute to purge airborne contaminants from the work area.

Work Techniques

- Keep all materials inside the lower air foil, and perform all contaminated operations as far to the rear of the work area as possible.
- Segregate all clean and contaminated materials in the work area.
- Avoid using techniques or procedures that disrupt the airflow patterns of the enclosure.

Final Purging

- Upon completion of work, the enclosure should be allowed to operate for two to three minutes undisturbed, to purge airborne contaminants from the work area before shutting down the blower.

Unloading Materials and Equipment

- Objects in contact with contaminated material should be surface decontaminated before removal from the enclosure.
- All open trays, weigh vessels or containers should be covered before being removed from the enclosure.

Shutdown

- Turn off the exhaust system and accessory light if provided.

Chapter 6: Maintaining your XPert Balance Enclosure or Protector XVS Ventilation Station

Now that you have an understanding of how to work in the enclosure, we will review the suggested maintenance schedule and the common service operations necessary to maintain your enclosure for peak performance.

Only trained and experienced certification technicians should perform some of the service operations after the enclosure has been properly decontaminated. DO NOT attempt to perform these operations if you are not properly trained. The wrench icon precedes the service operations that require qualified technicians.

Routine Maintenance Schedule

Weekly

- Clean the enclosure interior appropriate for the application.
- Operate the exhaust system, noting the airflow velocity through the enclosure using a source of visible smoke. Airflow alarms are recommended for constant monitoring.

Monthly (or more often as required)

- Determine the actual face velocity through the sash opening of the enclosure where the average reading should be at the specified velocity. (Use calibrated thermal anemometer or other approved apparatus). Airflow alarms are recommended for constant monitoring.
- Using a cloth and glass cleaner, clean the exterior surfaces of the enclosure, particularly the front of the enclosure, to remove any accumulated dust.
- The enclosure rear baffle should be checked for any blockage to ensure that the enclosure is maintaining proper airflow.
- All weekly activities.

Annually

- Replace the fluorescent lamps on accessory light kit.
- Have the enclosure validated by a qualified certification technician. See Validating the Vented Enclosure in Chapter 3.
- All monthly activities.

Calibrate and Operate the Airflow Monitors

Guardian Jr. Airflow Monitor

The Guardian Jr. Airflow Monitor is designed to continuously monitor airflow through enclosures. This permanently installed device provides both visual and audible alarms to alert the user of abnormal airflow conditions. A green light on the front of the monitor indicates normal flow conditions. When flow conditions lower than the set point is encountered, a red light is activated along with an audible alarm. A test button is provided at the front of the monitor to allow the user to check the operation of the alarm. To temporarily mute the audible alarm, press and release the test/reset button.

Guardian Jr. Component Identification

1. Air Inlet A portion of the air coming into the enclosure passes through the air inlet and across the flow sensors.
2. Normal Flow Indicator This green light indicates normal flow conditions.
3. Alarm Indicator This red light is activated approximately 6 seconds after the low flow set point is reached.
4. Test/Reset Button If no alarm is present, this button will cause the red lamp to light and the audible alarm to sound. If an alarm is present, the button will silence the audible alarm.
5. Adjustment for Alarm Set Point This potentiometer is used to set the low flow indicators for the alarm. It is adjusted with a small screwdriver.

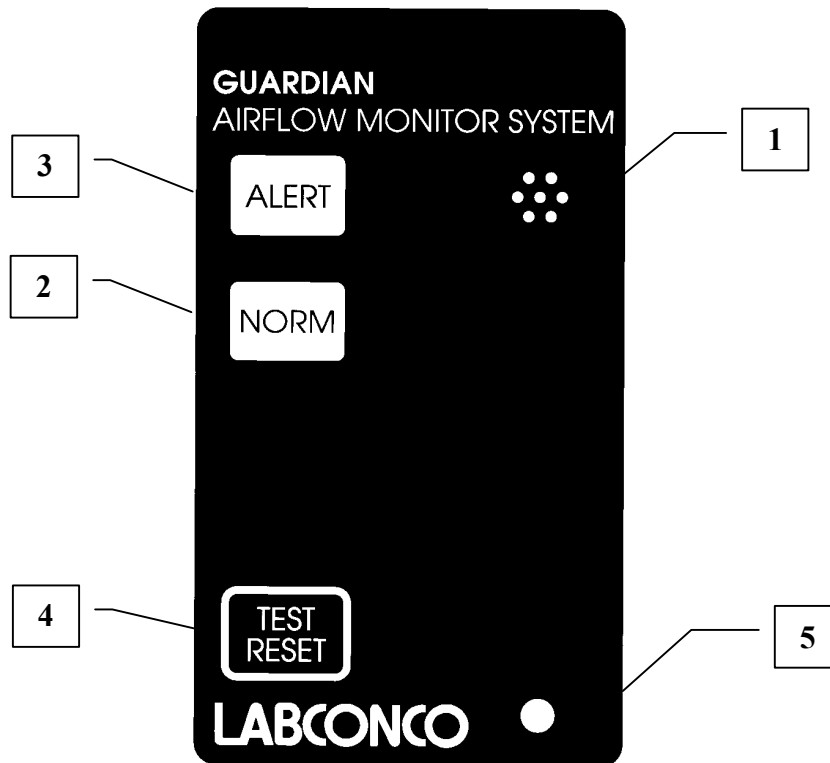


Figure 6-1
Guardian Jr. Components

Guardian Jr., Installation Procedure

1. The enclosure comes prepared to except the Guardian™ Jr. airflow monitor system.
2. First remove the small 0.50" dia. Gray hole plug and loosen the two hardware nuts from the enclosure. Keep the nuts for step 5. See Figure 6-2.

See Figure 6-3 for steps 3 through 9.

3. Remove the top monitor cover by removing the two #8-32 x .38" lg. Phillips screws to access the tube stem and clear plastic tubing.
4. Temporarily remove the tube stem, Item 1 in Figure 6-3, and clear plastic tubing, Item 2.
5. Without the tube stem and clear plastic tubing attached, mount the Guardian Jr. alarm module to the enclosure with the two hardware nuts removed from step 2. If the hardware stud drops from behind the rear baffle, then tilt the baffle and hold it up to install.
6. Install the tube stem by tapping the non-serrated end of the tube stem into the 0.50" hole on the enclosure. Silicone sealant may be applied between the tube stem and the enclosure.
7. Route the clear plastic tubing without kinks between the rubber elbow tubing connector on the back of the Guardian Jr. alarm module and the tube stem. This completes the airway passage between the alarm module and the enclosure.
8. Locate the 9VDC power supply transformer, which should already be connected to the power jack on the back of the alarm module and through the strain relief bushing. If disconnected, then reconnect to power the airflow monitor. Plug the 9VDC power supply into a standard 115V duplex receptacle, the back of the accessory FilterMate portable exhauster or the back of the accessory light. For 230V, plug the power supply into an adapter or add an extension cable for connection to the FilterMate. **(It is recommended that the airflow monitor be connected directly to the FilterMate switched auxiliary outlet so the airflow monitor is powered at the same time.)**
9. Finish the installation by re-attaching the top monitor cover with two #8-32 x .38" lg. Phillips screws from step 3.

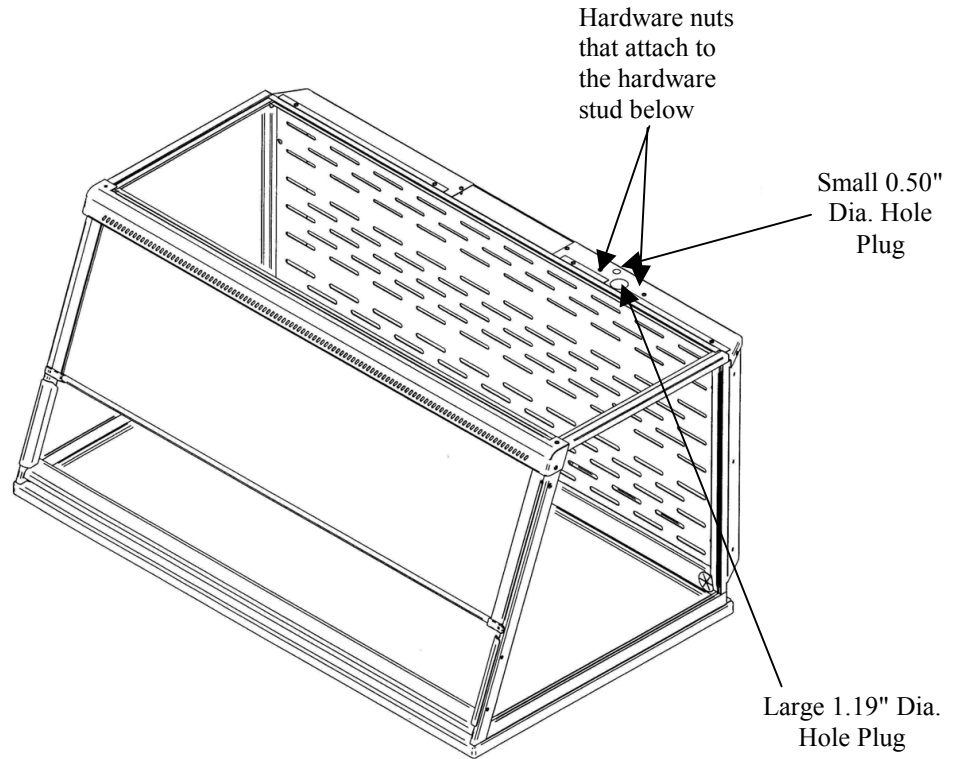


Figure 6-2
Hole Plug Location & Mounting Screws

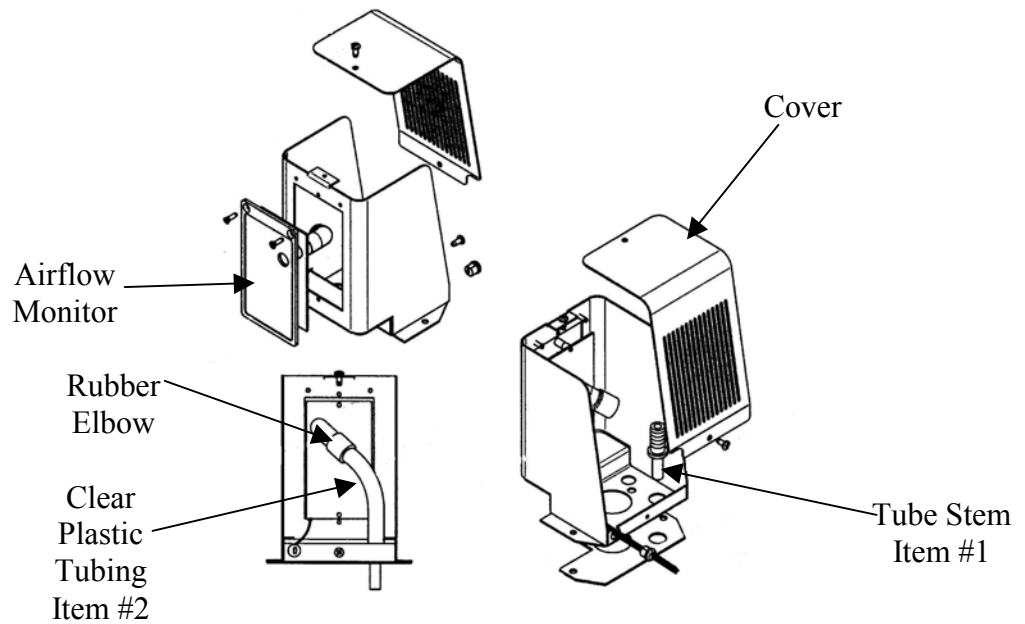


Figure 6-3
Guardian Jr. Details

Guardian Jr. Calibration Procedure

Each Guardian Jr., alarm module and enclosure is unique and needs to be individually calibrated in the field. The procedure for the adjustment is as follows:

1. Double check the installation to make sure that monitor and power supply is properly installed.
2. Allow 10 minutes for the monitor to warm up once power has been connected.
3. Determine the low flow set point for your monitor. This is the value where the monitor will first indicate a low flow condition. The red light will be on for this value. Refer to your industrial hygiene officer for the proper low flow set point or consult the table to follow.
4. Adjust your enclosure airflow to the low flow set point as previously determined. The exhaust flow can be lowered by adjusting the speed control on the FilterMate or by using an adjustable damper on the exhaust blower. Typical alarm conditions are set at face velocities of 10 to 20 feet per minute below the normal operating conditions due to supply air and exhaust air fluctuations, as well as room air cross drafts.
5. Using a properly calibrated thermo anemometer, determine the velocity through the face of the enclosure by taking a detailed velocity traverse. Divide the face area into equal increments. One reading per square foot of face area is normally recommended for an accurate traverse. Compute the average velocity for this area.
6. If the red light alarm is on, slowly turn the adjustment screw counterclockwise until the green light is activated. If the green light is on, slowly turn the adjustment screw clockwise until the red light comes on. Slowly turn the adjustment screw back until the red light is activated. It is important that these adjustments be done in small increments, at intervals about 10 seconds apart to allow for delayed reaction of the alarm itself. The alarm low flow set point should now be set and the red light activated.
7. Readjust the enclosure airflow to its normal operating levels. The green light should now be activated.
8. Calibration is now complete.

Enclosure Operating In Flow Speed	Alarm Condition Set Point Speed
100 fpm	80 - 90 fpm
80 fpm	60 - 70 fpm
60 fpm	40 - 50 fpm

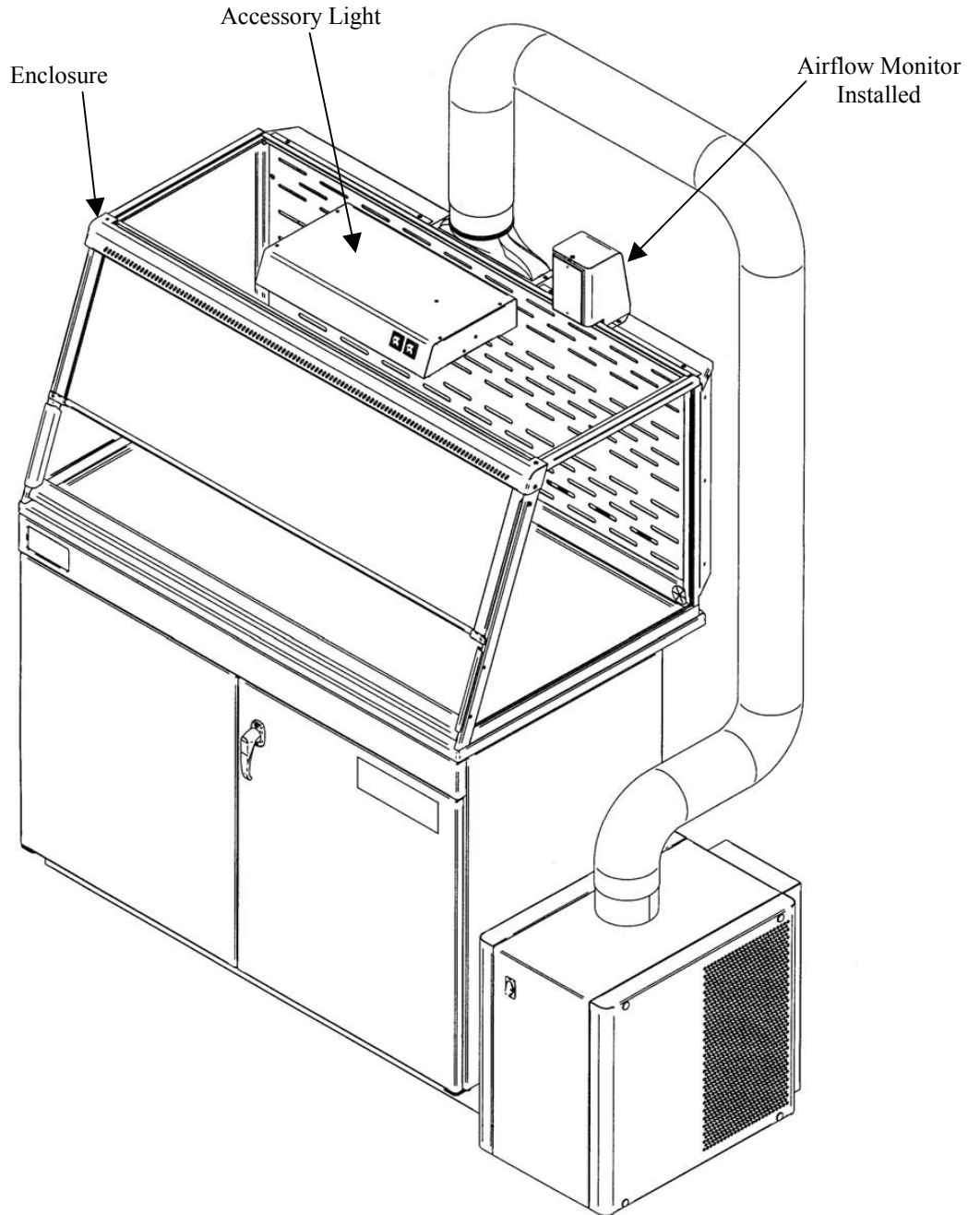


Figure 6-4
Guardian Jr., Installed

Guardian Jr. Alarm Activation

The audio and visual alarm will activate approximately six seconds after an alarm condition is detected. To temporarily mute the audible alarm, press and release the test/reset button.

NOTE: After an alarm condition has been detected, the red light will stay on. The audible alarm will remain muted until airflow returns to normal levels.

Guardian Jr. Alarm Test

When no alarm is present the alarm can be tested by pressing the test/reset button. While the button is pressed, the alarm light and audible alarm will be activated.

Guardian Digital 1000 Operation

The Guardian Digital Airflow Monitor consists of the airflow sensor; the Alarm Unit and the 15 VDC power supply. For 115V operation the alarm unit is powered by plugging the power supply into the factory-prepared digital airflow monitor socket. For 230V operation, the Alarm Unit is powered by plugging the power supply into a building outlet. The alarm has “Enter”, “+”, and “-” buttons to program the monitor. There is also a green LED “SAFE”, yellow LED “CAUTION”, and red LED “LOW” with audible alarm for airflow conditions. The audible alarm can be permanently muted if desired. The Guardian Digital 1000 Airflow Monitor displays a face velocity value, provides an RS232 communications port to a PC or building computer system, can be configured for external input connections such as night setback or external alarm and provides up to three output relays that can be configured. For complete detailed information, please refer to the separate Labconco 1000 Alarm User’s Manual provided with the enclosure.

Guardian Digital 1000 Installation Procedure

1. The enclosure comes prepared to except the Guardian™ 1000 Digital airflow monitor system.
2. First remove the large 1.19" dia. gray hole plug and loosen the two hardware nuts from the enclosure. Keep the nuts for step 3. See Figure 6-2. See Figure 6-5 only to reference internal assembly of the airflow monitor.
3. Secure the Guardian Digital alarm to the enclosure with the two hardware nuts removed from step 2. If the hardware stud drops from behind the rear baffle, then tilt the baffle and hold it up to install.
4. The airway passage between the alarm module and the enclosure is now complete.

5. Locate the 15VDC power supply transformer. One end should already be connected to the two-pin connector labeled 15 VDC on the back of the alarm module and through the strain relief bushing. If disconnected, then reconnect to power the airflow monitor. Plug the 115V power supply into a standard 115V duplex receptacle, the back of the accessory FilterMate portable exhaustor or the back of the accessory light. For 230V, plug an adapter or add an extension cable for connection to the FilterMate. **(It is recommended that the airflow monitor be connected directly to the FilterMate switched auxiliary outlet so the airflow monitor is powered at the same time.)**
6. Installation is now complete.

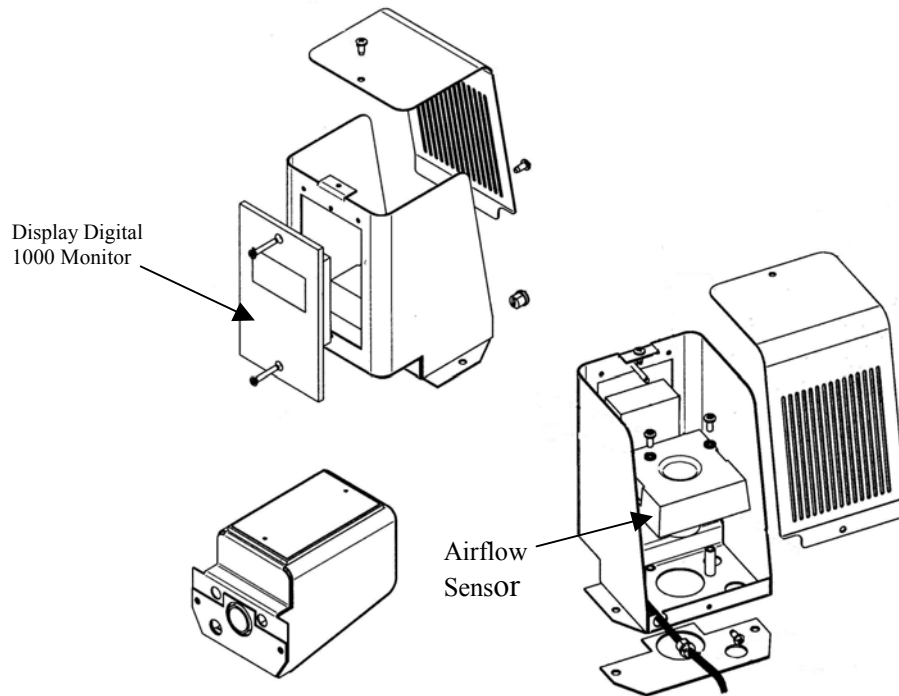


Figure 6-5
Digital 1000 Details

Digital 1000 Calibration

1. Calibrate the airflow monitor according to the instruction manual that comes with the kit. To successfully calibrate, it will be necessary to change the face velocity by adjusting the airflow exhaust volume. The face velocity can also be changed by raising and lowering the sash. The exhaust volume can be adjusted with the speed control on the FilterMate or by using an adjustable damper on the exhaust blower. Typical calibration conditions are set at face velocity air sample differences of at least 20 feet per minute. The airflow monitor is factory set to be calibrated with a difference of at least 50 fpm and can be changed by changing the “lower/higher air sample difference”. The following suggested in flow face velocity speeds are recommended to successfully calibrate. Typical low air alarms are set 10-20 fpm below operational speeds. Follow Step 2 below and review the Labconco 1000 Alarm User’s Manual that comes with the airflow monitor.

Low Air Alarm Set Point	Enclosure Operating In flow Speed	Low Calibration Set Point	High Calibration Set Point
40 - 50 fpm	60 fpm	40 - 60 fpm	100 – 120 fpm
60 - 70 fpm	80 fpm	50 - 90 fpm	100 – 150 fpm
80 – 90 fpm	100 fpm	50 – 110 fpm	100 – 170 fpm

2. Go to SETUP menu and then CAL CONFIG MENU and change the “lower/higher air sample difference” to 20 fpm. This will allow you to successfully calibrate with values of a minimum of 20 fpm difference.
3. While in CAL CONFIG MENU, change the “sensor difference” from 10% to 3%.
4. While in CAL CONFIG MENU, adjust the red low air alarm to the desired setting such as 60 fpm. Then adjust the yellow “CAUTION or WARNING” to 63 fpm, if desired. Then adjust the “CAUTION or WARNING” air reset to 3 fpm. This sets the alarm condition.
5. To complete the CAL CONFIGURATION, be sure to enter “DONE”.
6. To start the calibration mode, use the Labconco 1000 Manual and enter “CALIBRATION” mode on the display from the SETUP menu.
7. Follow the instructions on the display and alter the low exhaust volume with the speed control on the FilterMate or exhaust damper; alternatively, the face velocity may be changed by raising the sash. Measure the average face velocity and enter the low value on the display. Be careful not to block the opening. The low exhaust volume calibration will take about 5 seconds.

8. Now alter the high exhaust volume with the speed control on the FilterMate or exhaust damper; alternatively, the face velocity may be changed by lowering the sash. Measure the average face velocity and enter the high value on the display. The high value must be at least 20 fpm greater than the low value. The high exhaust volume calibration will take about 5 seconds.
9. Be sure to enter “DONE” after successfully completing the low and high calibration set points.
10. Once calibration is completed, go to “RUN” and hit “ENTER”. The value should read close to the high calibration set point.
11. To lower the face velocity to the operating point, simply alter the exhaust volume with the speed control on the FilterMate or exhaust damper. Then recheck the face velocity with an anemometer to confirm the display on the digital airflow monitor.

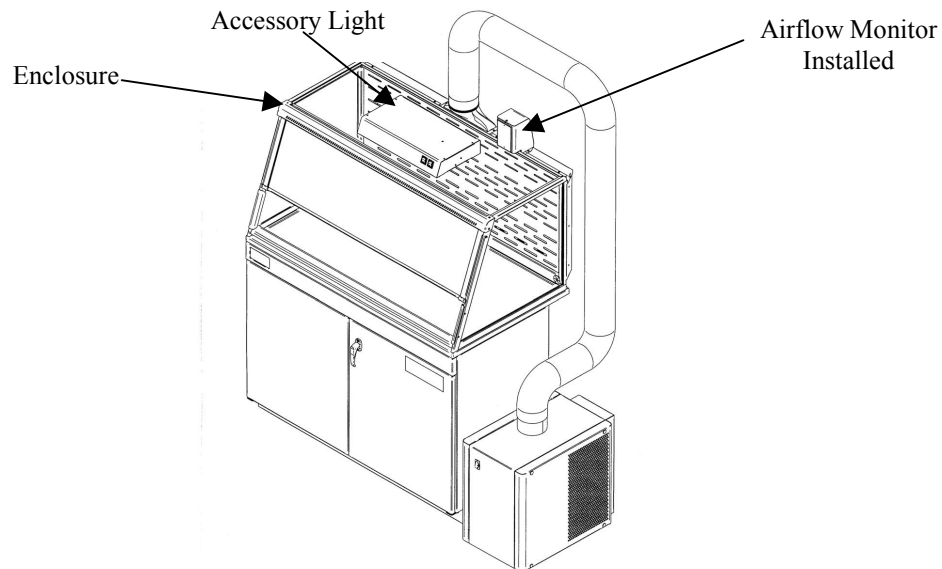


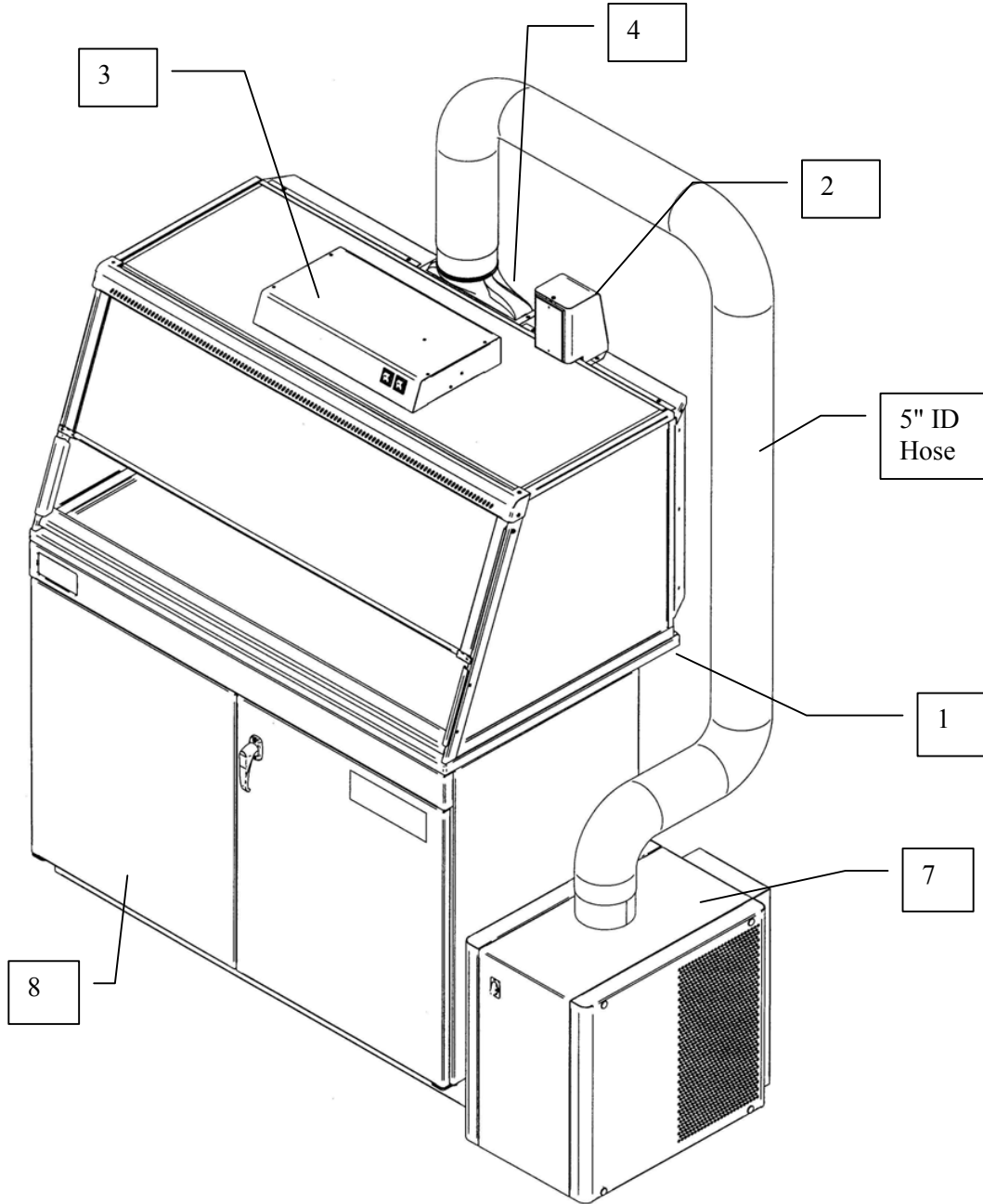
Figure 6-6
Digital 1000 Installed

Chapter 7: Accessorizing your XPert Balance Enclosure or Protector XVS Ventilation Station

There are several ways to accessorize the enclosure for your individual requirements. These include the addition of accessory work surfaces, airflow monitors, fluorescent light kits, exhaust transition adapters, remote blowers, exhaust dampers, FilterMate Portable Exhausters, filters, storage cabinets and utility shelf kit.

Optional Equipment for the Enclosure

Figure 7-1



1. Work Surfaces

An optional work surface is available to attach to the enclosure.

Dished work surfaces are contoured to fit the dimensions of the XPert Balance Enclosures and Protector XVS Ventilation Stations to contain spills.

Catalog #	Description	Dimensions (W x D x H)
3908400	Black, 2-foot wide Epoxy	24" x 26.66" x 1"
3908401	Black, 3-foot wide Epoxy	36" x 26.66" x 1"
3908402	Black, 4-foot wide Epoxy	48" x 26.66" x 1"
3908403	Gray, 2-foot wide Epoxy	24" x 26.66" x 1"
3908404	Gray, 3-foot wide Epoxy	36" x 26.66" x 1"
3908405	Gray, 4-foot wide Epoxy	48" x 26.66" x 1"
3975500	5' Stainless w/ Trough	60" x 26.7" x 0.8"
3975501	5' (Deep) Stainless w/ Trough	60" x 35.5" x 0.8"
3975600	6' Stainless w/ Trough	72" x 26.7" x 0.8"
3975601	6' (Deep) Stainless w/ Trough	72" x 35.5" x 0.8"
3975800	8' Stainless w/ Trough	96" x 26.7" x 0.8"
3975801	8' (Deep) Stainless w/ Trough	96" x 35.5" x 0.8"

2. Guardian™ Digital Airflow Monitor or Guardian™ Jr. Airflow Monitor

The Guardian Digital Airflow Monitor or Guardian Jr. Airflow Monitor allows you to continuously monitor airflow through the enclosure. The rear exhaust plenum is factory prepared to mount either monitor.

Catalog #	Description
3908700	Guardian Jr. Airflow Monitor, 115V, 60 Hz
3908701	Guardian Jr. Airflow Monitor, 230V, 50 Hz
3908800	Guardian Digital 1000 Airflow Monitor 115V, 60 Hz
3908801	Guardian Digital 1000 Airflow Monitor 230V, 50 Hz

3. Fluorescent Light Kit

A fluorescent light, which rests on the top of the enclosure, is available.

Catalog #	Description
3909200	18.25" W x 10.12"D x 3.00" H light kit, 115V, 60 Hz
3909201	18.25" W x 10.12"D x 3.00" H light kit, 230V, 50 Hz

4. Exhaust Transition Adapters and Dual Exhaust Connectors

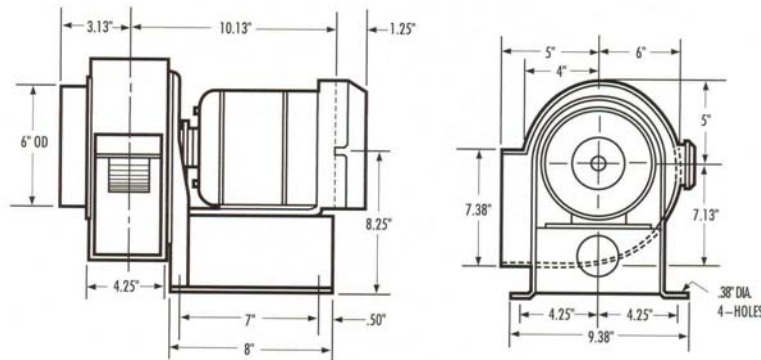
A 2" x 10" adapter connects to the enclosure from either the top or the bottom of the rear plenum so the duct can be routed either up or down, respectively. The transition is available for either 5.00" I.D. hose or 6" OD duct. The 5.00" I.D. hose upper connection is standard and included with the FilterMate. Multiple Exhaust Connectors are used for multiple FilterMates or connections for 8' exhaust outlets.

Catalog #	Description	Material	
3912400	Upper connection, 5" Hose	Coated Steel, Epoxy Coated	Included with FilterMate
3912401	Upper connection, 6" Duct	Coated Steel, Epoxy Coated	
3912402	Lower connection, 5" Hose	Coated Steel, Epoxy Coated	
3912403	Lower connection, 6" Duct	Coated Steel, Epoxy Coated	
3981600	Dual Exhaust 8" x 6" x 6"	Coated Steel, Epoxy Coated	Use with 8' unit only to house exhaust

5. Remote Blowers

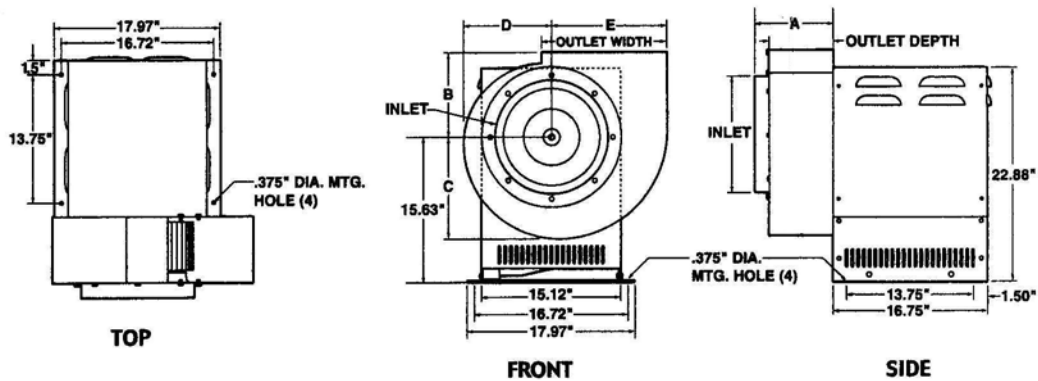
Has a 1/4 hp direct drive motor and corrosion-resistant epoxy-coated steel housing and wheel with blower inlet of 6.00" ID. Outlet dimensions are 4.25" x 7.38" OD.

CFM @ Static Pressure-Inches of H ₂ O						
S.P.	0.0"	0.125"	0.25"	0.50"	0.75"	0.87"
CFM	595	560	515	420	300	167
Catalog #	Description					Shipping Wt. (lbs./kg.)
4863500	Remote Blower, 115 V, 60 Hz, 4.4 amps					35/16
4863501	Remote Blower, 115/230 V, 50 Hz, 5.6/2.8 amps					35/16
7053501	Explosion-Proof Remote Blower, 115 V, 60 Hz, 4.4 amps					40/18



1/4 hp or 1/3 hp belt drive with adjustable sheave to change RPM. Corrosion-resistant epoxy-coated steel housing and wheel. Blower inlet is 10.87" ID. Outlet dimensions are a rectangular 5.5" x 10" OD. See dimensional data in Chapter 7.

Catalog #		HP	Description	CFM@RPM Ranges at Static Pressure (in H ₂ O)						
Std.	EP			.25"	.38"	.50"	.62"	.75"	.88"	1.00"
7068200		1/4	Remote Blower, 115V, 60 Hz, 4.4 A	540@800	410@800	350@870	390@970	430@1060		
	7068300	1/4	Explosion Proof Blower 115V, 60 Hz, 4.5 A	720@950	760@1050	710@1060	620@1060			
7068400		1/3	Remote Blower, 115V, 60 Hz, 6.1 A		760@1050	710@1060	620@1060	430@1060	460@1150	500@1220
	7068500	1/3	Explosion Proof Blower, 115V, 60 Hz, 6.4 A		850@1130	825@1160	790@1190	770@1220	740@1260	640@1260



6. Exhaust Dampers

Exhaust dampers allow an adjustment required to maintain proper airflow for roof-mounted blowers or house exhaust systems.

Catalog #	Description
3924000	6" Epoxy Coated Steel In-Line adjustable damper
4724200	6" PVC In-line adjustable damper
5983400	10" PVC In-line adjustable damper

7. FilterMate Portable Exhausters and Filters

For filtered exhaust, Labconco offers FilterMate Portable Exhausters capable of exhausting up to 280 cfm of HEPA filtered air or up to 220 cfm of combination HEPA/Carbon filtered air when connected to the enclosure. For additional exhaust volume, multiple FilterMates with balanced airflow can be used.

Catalog #	Voltage	Filter	Exhaust Connection	Exhaust Airflow (cfm)
3970000	115 Volt/60 Hz	HEPA	None	280
3970001	115 Volt/60 Hz	Carbon	None	280
3970002	115 Volt/60 Hz	HEPA	Thimble to outside	280
3970003	115 Volt/60 Hz	HEPA/Carbon	None	220
3970004	115 Volt/60 Hz	Carbon/Carbon	None	220
3970020	230 Volt/50 Hz	HEPA	None	280
3970021	230 Volt/50 Hz	Carbon	None	280
3970022	230 Volt/50 Hz	HEPA	Thimble to outside	280
3970023	230 Volt/50 Hz	HEPA/Carbon	None	220
3970024	230 Volt/50 Hz	Carbon/Carbon	None	220

HEPA Filter

Part #3707900 is 99.99% efficient on particles 0.3 micron.

HEPA Filter Bag-In/Bag-Out Bag

Part #3776002 helps contain hazardous particulate matter during filter changing operations.

Carbon Filter

Provides granular activated carbon or impregnated carbon.

Filter Classification	Part #	x Pounds
Organic	3923400	12.0 lbs activated carbon
Formaldehyde	3923401	14.0 lbs impregnated carbon
Ammonia	3923402	16.0 lbs impregnated carbon

8. Storage Cabinets

Size/Description	SOLVENT			ACID		
	Dual Doors	Right Hinge	Left Hinge	Dual Doors	Right Hinge	Left Hinge
48"	9902000	-	-	9901000	-	-
36"	9902100	-	-	9901100	-	-
30"	9902200	-	-	9901200	-	-
24"	-	9902300	9902400	-	9901300	9901500
18"	-	-	-	-	9901400	9901600
12"	-	-	-	-	-	-
48" w/Self Closing Doors	9903000	-	-	-	-	-
36" w/Self Closing Doors	9903100	-	-	-	-	-
30" w/Self Closing Doors	9903200	-	-	-	-	-
24" w/Self Closing Doors	-	9903300	9903400	-	-	-
24" ADA	-	9906000	9906100	-	9905000	9905200
24" ADA w/Self Closing Doors	-	9906200	9906300	-	-	-
18" ADA	-	-	-	-	9905100	9905300
12" ADA	-	-	-	-	-	-

Size/Description	STANDARD BASE			VACUUM PUMP		
	Dual Doors	Right Hinge	Left Hinge	Dual Doors	Right Hinge	Left Hinge
48"	9900000	-	-	-	-	-
36"	9900100	-	-	-	-	-
30"	9900200	-	-	-	-	-
24"	-	9900300	9900600	-	-	-
18"	-	9900400	9900700	-	9907000	9907100
12"	-	9900500	9900800	-	-	-
48" w/Self Closing Doors	-	-	-	-	-	-
36" w/Self Closing Doors	-	-	-	-	-	-
30" w/Self Closing Doors	-	-	-	-	-	-
24" w/Self Closing Doors	-	-	-	-	-	-
24" ADA	-	9904000	9904300	-	-	-
24" ADA w/Self Closing Doors	-	-	-	-	-	-
18" ADA	-	9904100	9904400	-	-	-
12" ADA	-	9904200	9904500	-	-	-

9. Utility Shelf Kit and Holders

Labconco offers a utility shelf kit part number 3925000 consisting of three shelves to hold items inside the enclosure. One shelf may be used for the printer, one shelf for spatulas and weigh brushes, and one miscellaneous shelf. The shelves hang from slots in the rear baffle. The printer shelf can be inverted and rest on top of the enclosure as an alternate location.

The 3927700 Bottle Holder holds a squirt bottle and has a 3" diameter opening.

The 3927800 Tissue Holder permits tissues to be dispensed from the bottom.

10. Hoses, Hose Clamps, and Hose Kits

Provides Alternatives for ducting.

Catalog #	Description
4868600	8 Feet of 5" ID gray flexible polypropylene hose (included with FilterMate). General-purpose chemical resistant hose suitable in pharmaceutical applications.
1921000	5" T-Bolt Hose Clamp (two included with FilterMate)
3927500	8 Feet of 5" ID clear smooth bore static dissipation hose with two hose clamps. Suitable in clean rooms or pharmaceutical applications.
3927600	8 Feet of 6" ID black thermoplastic hose with two 6.09" ID cuffs. Include two 6" hose clamps. Suitable for connection to house exhaust in pharmaceutical applications.
1921500	6" T-Bolt Hose Clamp

Chapter 8: Troubleshooting

Refer to the following table if your XPert Balance Enclosure System or Protector XVS Ventilation Station fails to operate properly. If the suggested corrective actions do not solve your problem, contact Labconco for additional assistance.

PROBLEM	CAUSE	CORRECTIVE ACTION
Contaminants outside of enclosure	Improper user techniques for the enclosure.	See “Certifying the Hood” Chapter 3 and “Safety Precautions” Chapter 4 sections in the manual. (Ref. Appendix D)
	Restriction of the baffle air slots or blockage of the exhaust outlet.	Remove obstruction to ensure that all air slots and the exhaust outlet are unobstructed.
	External factors are disrupting the enclosure airflow patterns or acting as a source of contamination.	See “Location Requirements” Chapter 2, “Certifying the Enclosure” Chapter 3, and “Safety Precautions” Chapter 4 sections of this manual. (Ref. Appendix D)
	Enclosure has improper face velocity.	Have enclosure certified and check exhaust system. Check FilterMate filters for loading. Adjust FilterMate speed control. Enclosure should have average face velocity of 60-100 fpm.
Airflow monitor malfunction.	No power. No lights. No display. No audible alarm.	Power supply is not plugged into proper voltage; plug in power supply. Verify that airflow monitor interface cables are connected. Check fuses on FilterMate or accessory light. Alarm has been temporarily silenced using “test/reset” or “enter” buttons.
	Wrong alarm set point.	Airflow monitor was not properly adjusted. Repeat calibration steps outlined in the airflow monitor manual.
	Constant audible alarm. Continuous alarm.	Check airflow and calibration of airflow monitor. Check the face velocity of the enclosure as the airflow of the system may have changed. If face velocity is correct, calibrate the airflow monitor outlined in the Users Manual.
	Monitor alarms; air way to airflow monitor sensor is blocked by insects, dust or debris.	Lightly clean the airway with clean air. Be careful not to touch sensitive electrical components.
	Audible disable will not stay ON	An alarm condition must be continuously present before the audible alarm can be silenced. If flow conditions fluctuate near the alarm set point, the airflow monitor will automatically reset itself. Action should be taken to bring the enclosure airflow into proper operating parameters or adjust the alarm set point lower.

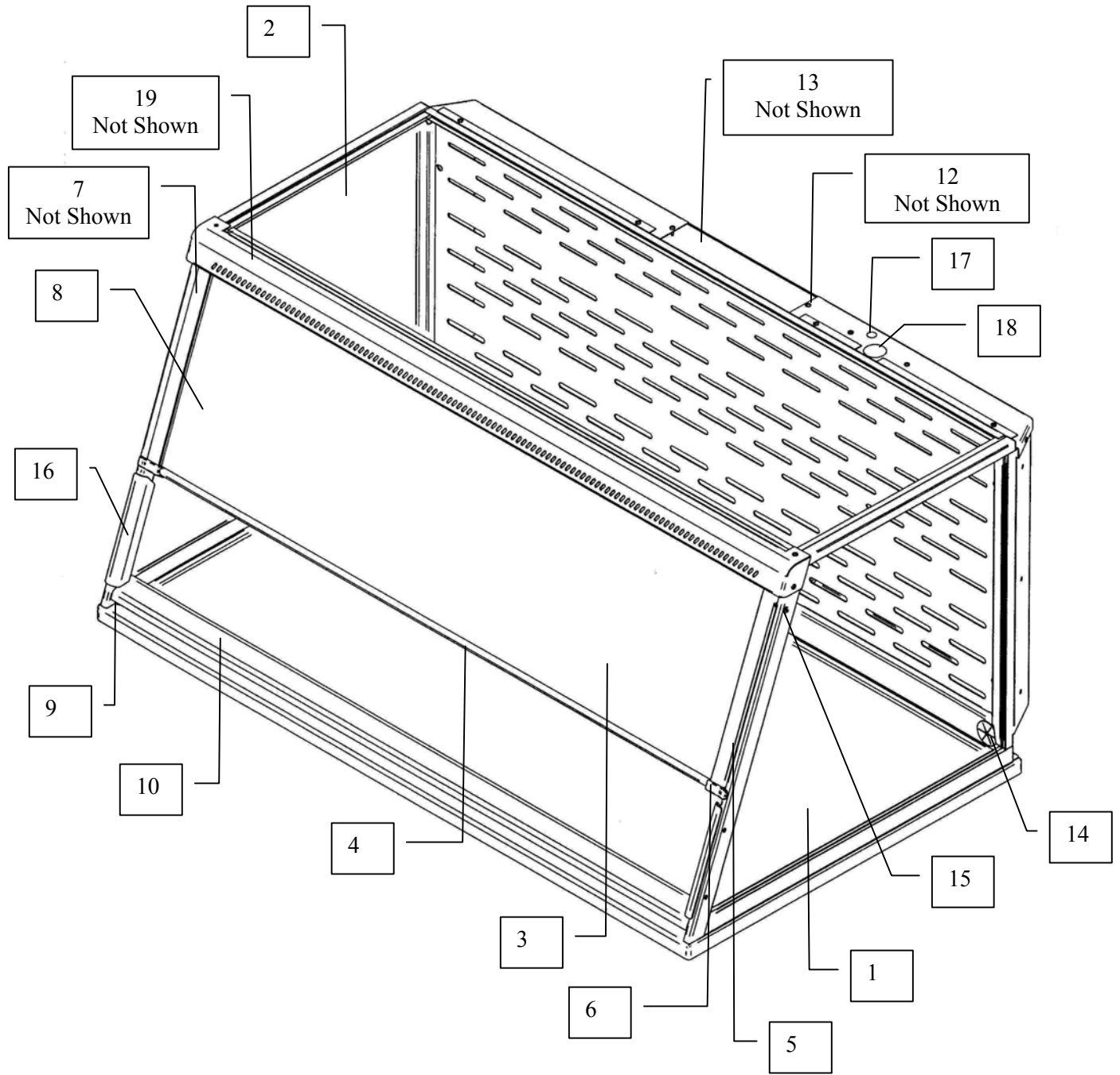
Appendix A: Replacement Parts

The following illustrations indicate the replacement parts.

Item	Qty.	Part Number	Description
1A	1	3906500	Glass, Side Short
1B	1	3926500	Glass, Side Tall
1C	1	3976400	Glass, Side Deep
1D	1	3976401	Glass, Side Deep w/ hole
2A	1	3906800	Glass, Top 2'
2B	1	3906801	Glass, Top 3'
2C	1	3906802	Glass, Top 4'
2D	1	3906803	Glass, Top 5'
2E	1	3906804	Glass, Top 6'
2F	1	3906805	Glass, Top 8'
2G	1	3906806	Glass, Top 5' Deep
2H	1	3906807	Glass, Top 6' Deep
2I	1	3906808	Glass, Top 8' Deep
3A	1	3906100	Glass, Sash 2' Short
3B	1	3906101	Glass, Sash 3' Short
3C	1	3906102	Glass, Sash 4' Short
3D	1	3926100	Glass, Sash 2' Tall
3E	1	3926101	Glass, Sash 3' Tall
3F	1	3926102	Glass, Sash 4' Tall
3G	1	3967203	Glass, Sash 5'
3H	1	3967204	Glass, Sash 6'
3I	1	3967205	Glass, Sash 8'
3J	1	3967206	Glass, Sash 5' Tall
3K	1	3967207	Glass, Sash 6' Tall
3L	1	3967208	Glass, Sash 8' Tall
4A	1	3907600	Foil, Sash 2'
4B	1	3907601	Foil, Sash 3'
4C	1	3907602	Foil, Sash 4'
4D	1	3967100	Foil, Sash 5'
4E	1	3967101	Foil, Sash 6'
4F	1	3967102	Foil, Sash 8'
5	2.3 Ft.	6913700	Wiper, Sash
6A	1	3907500	Stop, Right Sash
6B	1	3907501	Stop, Left Sash
7A	1	1927403	Spring, Compression Sash Latch
7B	1	3906700	Latch Bracket
7C	1	6916500	Latch Sash
7D	2	1893206	Screw, #8-32 x .38 Phil, SS, Type F

Appendix A: Replacement Parts

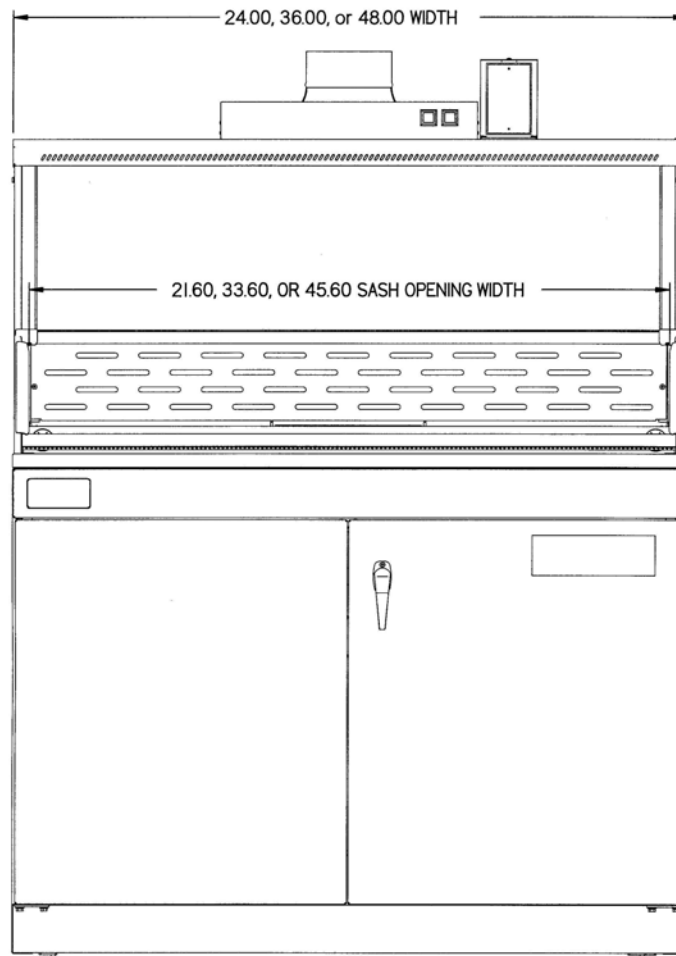
Item	Qty.	Part Number	Description
7E	1	3925300	Tall Latch Bracket
7F	1	6916501	Tall Latch Sash
7G	1	3974300	Gas Spring, 5', 20#
7H	1	3974301	Gas Spring, 6', 30#
7I	1	3974302	Gas Spring, 8' 40#
7J	1	3973200	Gas Spring, 5' Tall, 30#
7K	1	3973201	Gas Spring, 6' Tall, 40#
7L	1	3973202	Gas Spring, 8' Tall, 50#
8A	1	3986500	Sash Assembly 2'
8B	1	3986501	Sash Assembly 3'
8C	1	3986502	Sash Assembly 4'
8D	1	3987100	Sash Assembly Tall 2'
8E	1	3987104	Sash Assembly Tall 3'
8F	1	3987102	Sash Assembly Tall 4'
8G	1	3972300	Sash Assembly, 5'
8H	1	3972301	Sash Assembly, 6'
8I	1	3973202	Sash Assembly, 8'
8J	1	3977200	Sash Assembly, 5' Tall
8K	1	3977201	Sash Assembly, 6' Tall
8L	1	3977202	Sash Assembly, 8' Tall
9A	1	3907400	Bracket, Air Foil Right
9B	1	3907401	Bracket, Air Foil Left
9C	2	1932401	Washer, Shoulder Plastic
9D	2	1912108	Washer, .194 ID x .38 OD x .03 thick plastic
9E	2	1909217	Cap Nut #10-24 SS
10A	1	3905600	Air Foil 2'
10B	1	3905601	Air Foil 3'
10C	1	3905602	Air Foil 4'
10D	1	3969200	Air Foil 5'
10E	1	3969201	Air Foil 6'
10F	1	3969202	Air Foil 8'
11A	1	3905300	Header 2'
11B	1	3905301	Header 3'
11C	1	3905302	Header 4'
11D	1	3905303	Header 5'
11E	1	3905304	Header 6'
11F	1	3905305	Header 8'
12	1	3913100	Cover Plate, Exhaust (Top or Bottom)
13A	1	3912400	Upper Exhaust Transition 5" Hose
13B	1	3912401	Upper Exhaust Transition 6" Duct
13C	1	3912402	Lower Exhaust Transition 5" Hose
13D	1	3912403	Lower Exhaust Transition 6" Duct
14A	1	1934601	Bushing, Heyco with Flex Shutter 1.50 dia.
14B	1	1936800	Bushing, Heyco Closed 1.50 dia.
15A	2	7868402	Spacer Bushing
15B	2	1912108	Washer, .194 ID x .38 OD x .03 T. Plastic
15C	2	1889316	Screw, #10-24 x 1.00 PH. (SS)
16A	2	3915400	Side Air Foil, Short
16B	2	3915401	Side Air Foil, Tall
16C	4	1889912	Screw, 6-32 x .75 PH. Type F, Oval Head
17	1	1595619	Hole Plug, .500 dia. Gray
18	1	1595621	Hole Plug, 1.187 dia. Gray
19A	1	3901100	Label, Ventilation Station
19B	1	3901200	Label, Balance Enclosure



Appendix B: Dimensions

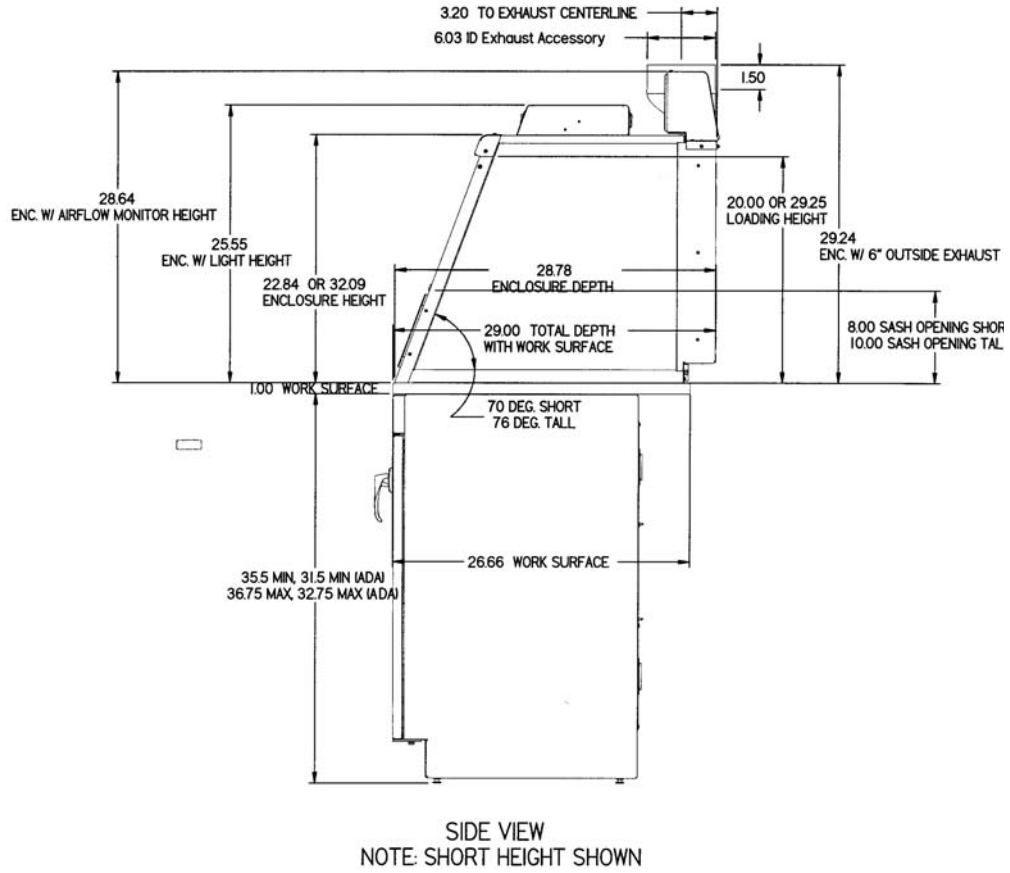
See the following dimensions.

2', 3', and 4' Units

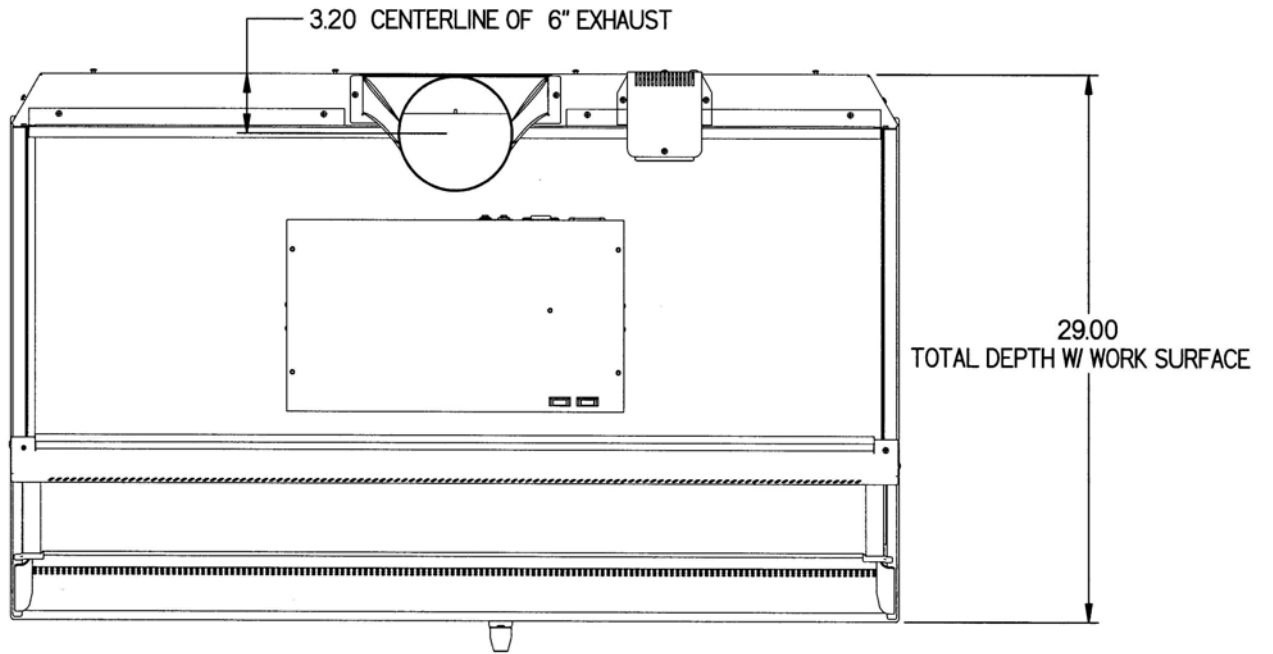


FRONT VIEW
NOTE: SHORT HEIGHT SHOWN

2', 3', and 4' Units

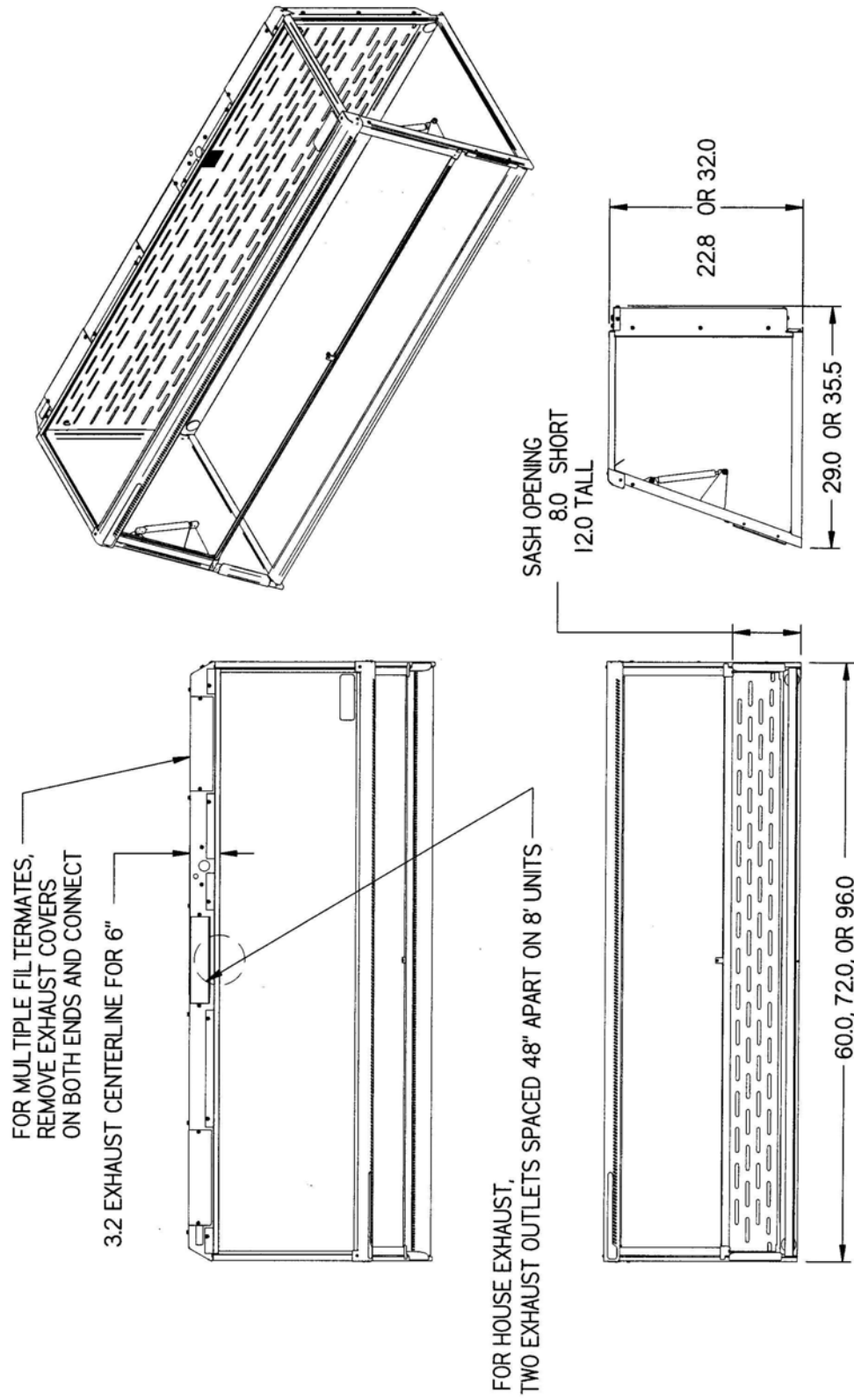


2, 3', and 4' Units



TOP VIEW

5', 6' & 8' LARGE XPERTS SHOWN WITHOUT AIRFLOW MONITOR AND EXHAUST TRANSITION



Appendix C: Specifications

Environmental Conditions

- Indoor use only.
- Maximum altitude: 6562 feet (2000 meters).
- Ambient temperature range: 41° to 104°F (5° to 40°C).
- Maximum relative humidity: 80% for temperatures up to 88°F (31°C), decreasing linearly to 50% relative humidity at 104°F (40°C).
- Main supply voltage fluctuations not to exceed $\pm 10\%$ of the nominal voltage.
- Transient over-voltages according to Installation Categories II (Over-voltage Categories per IEC 1010). Temporary voltage spikes on the AC input line that may be as high as 1500V for 115V models and 2500V for 230V models are allowed.
- Used in an environment of Pollution degrees 2 (i.e., where normally only non-conductive atmospheres are present). Occasionally, however, a temporary conductivity caused by condensation must be expected, in accordance with IEC 664.

DECLARATION OF CONFORMITY

Application Council Directive(s): 73/23/EEC, 89/336/EEC

Standard(s) to which conformity is declared: EN61010, EN55022, EN50082-1

Manufacturer's Name: Labconco Corporation

Manufacturer's Address: 8811 Prospect Avenue
Kansas City, MO 64132 USA

Importer's Name: See Shipping/Customs Documents*

Importer's Address: See Shipping/Customs Documents for your
equipment

Type of Equipment: Laboratory Equipment XPert Bulk Powder Enclosures

3930200 Series	2' XPert Balance Enclosure
3930300 Series	3' XPert Balance Enclosure
3930400 Series	4' XPert Balance Enclosure
3971500 Series	5' XPert Balance Enclosure
3971600 Series	6' XPert Balance Enclosure
3971800 Series	8' XPert Balance Enclosure
4862000 Series	2' Protector XVS Ventilation Station
4863000 Series	3' Protector XVS Ventilation Station
4864000 Series	4' Protector XVS Ventilation Station

Serial No.: Various – See Individual Declaration

Year of Manufacture: 2005 and subsequent

I, the undersigned, hereby declare that the equipment specified above conforms to the above Directive(s) and Standard(s).

See individual Declaration of Conformity, which will be signed by the importer for your country.

Place:

(Signature)

Date:

(Full Name)

(Position)

*An individual version of this declaration is included with your shipping/customs documentation.

Labconco P/N 3696044 Rev A