



Systems Biology Solutions

BIOMEK® ASSAY WORKSTATION

AUTOMATION



SCALABLE ASSAY AUTOMATION

Beckman Coulter's new Biomek® Assay Workstation extends its successful automation product line to a wider range of Systems Biology applications.

Ideal for drug discovery research, the new workstation can be configured with either the Biomek FX or NX liquid handlers, providing multiple pipetting and configuration options for different capacity, throughput and lab space requirements. The system's SAMI® Workstation EX Software incorporates optimized planning and data-driven dynamic rescheduling for prevalidated schedules and run-time flexibility when needed. The software allows the user to create methods and run multiple assays for increased throughput and resource utilization. The new graphical interface, with language geared specifically to the scientist, makes assay design easier. This flexible software gives researchers complete control over all aspects of their custom-designed assays, including incubation, plate washing, liquid transfers, and detection options.

CHOOSE A SYSTEM WITH A BIOMEK NX OR FX TO MEET YOUR ASSAY AND THROUGHPUT NEEDS

- Individually controlled probes on the Span-8 pipetting head give you the power to transfer to and from unique wells
- 96 - or 384 - channel pipetting heads are ideal for whole-plate transfers
- Employ our built-in libraries of commonly used labware, liquid types and pipetting techniques or create your own
- Increase assay efficiency with our wide variety of ALPs (Automated Labware Positioners) such as shakers, stirrers, and more

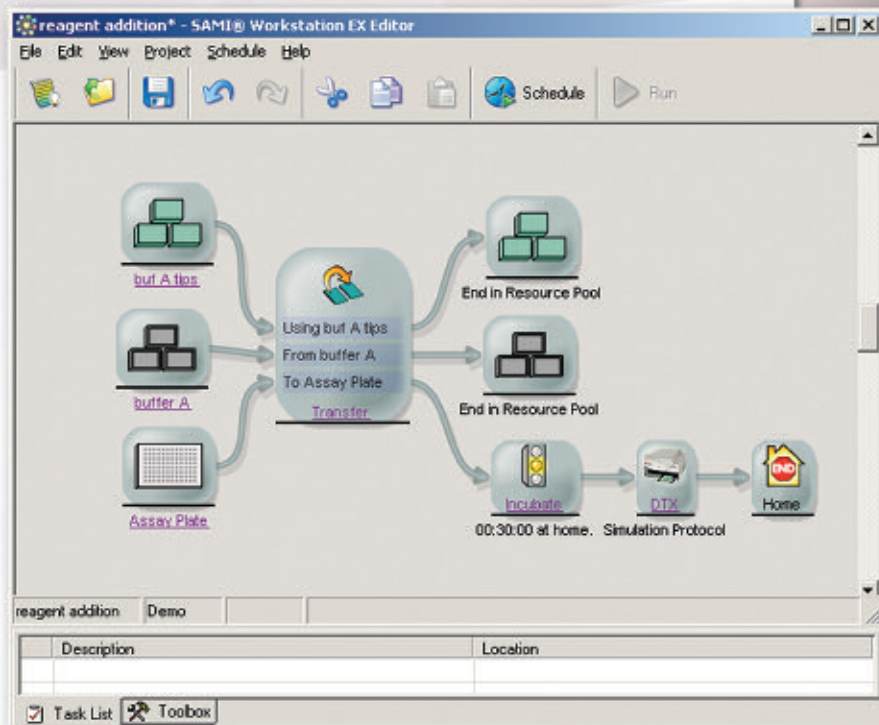
TO SUIT YOUR THROUGHPUT NEEDS

SAMI WORKSTATION EX – INTELLIGENT AUTOMATION SOFTWARE

SAMI Workstation EX provides a graphical interface that lets scientists and technicians describe complex assays in a straightforward, easy to understand manner.

- Draw the flow of plates through the assay
- Configure:
 - Liquid transfer
 - Incubation
 - Detection
 - Washing
- Specify resources (i.e., fresh plates, tip boxes)

The software takes care of the rest – intelligently handling plate movement.



PREVALIDATED SCHEDULES AND DATA-DRIVEN DYNAMIC FEATURES

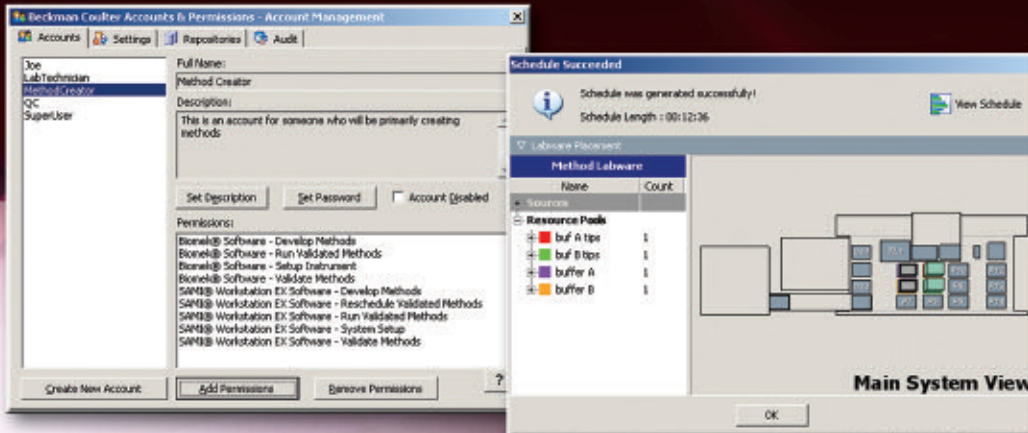
Powerful scheduler interleaves actions to increase throughput and provide a prevalidated schedule:

- Know how long your assay will run
- Optimize resource utilization (i.e., labware, reagents)

Take advantage of information available to the assay during the run to change the flow of samples through the method with:

- IF node for decision making
- Reschedule node for resource planning and schedule re-optimizing
- Data handling nodes for data-driven decisions





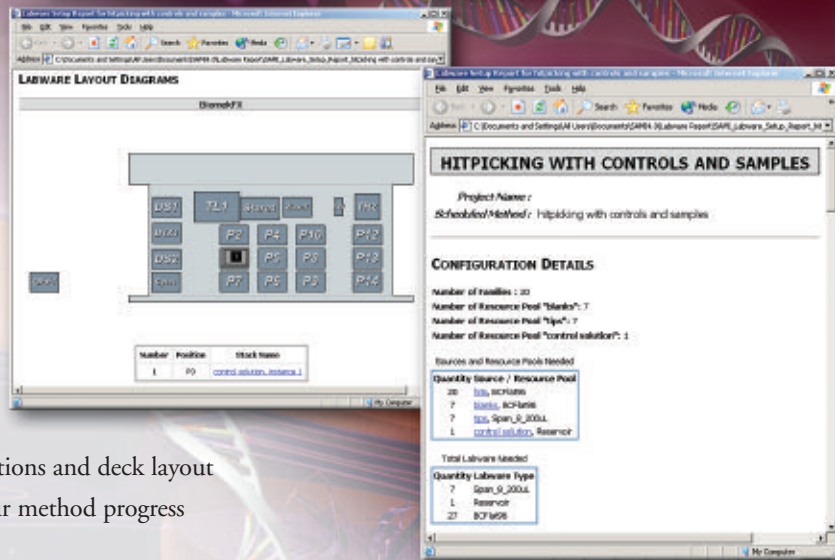
TOOLS TO MANAGE METHOD DEVELOPMENT AND EXECUTION – ADDRESSING 21 CFR PART 11

Complete control for Lab Supervisors with Beckman Coulter Accounts and Permissions with Tools for 21 CFR Part 11 Compliance

- Logs of operator interactions
- Sensible method version tracking
- Ensured data quality and integrity

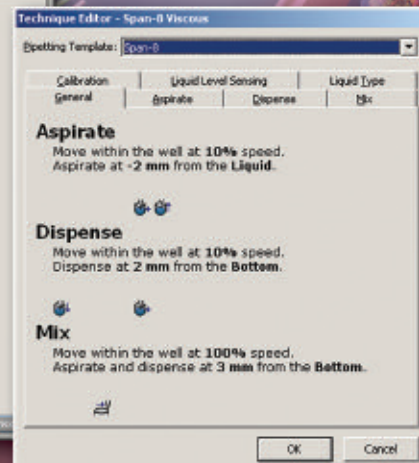
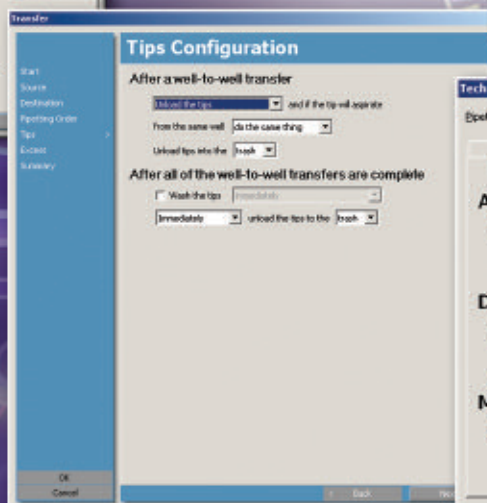
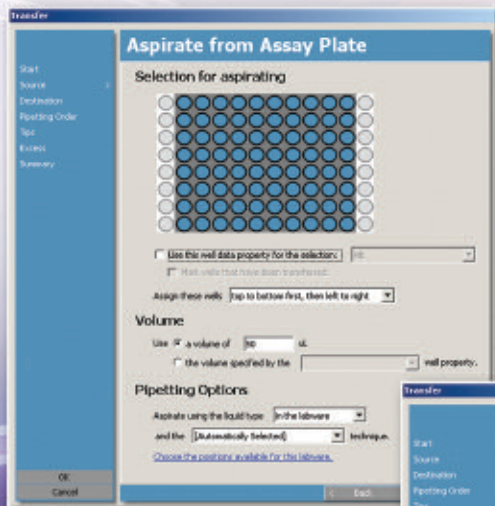
Help with Assay Execution

- Graphical reports describe labware positions and deck layout
- Graphical run-time interface shows your method progress



SEAMLESS BIOMEK INTEGRATION

- SAMI Workstation EX extends the Biomek software for assays with incubations or timing constraints – giving you simplified programming and better throughput by interleaving operations
- SAMI Workstation EX uses the same labware and liquid transfer techniques to build assays quickly and leverage existing libraries of customer created knowledge
- Simply describe the aspects of liquid handling that are important to your experiment with the new Transfer node



SUIT YOUR THROUGHPUT NEEDS



SEAMLESS INTEGRATION OF THE TOOLS YOU NEED

- Robust, flexible, plate washing
- Microplate incubation with temperature, humidity, and CO₂ control
- Barcode reading for sample logging
- Tip and labware storage for extended walk-away time



DTX 800/880 DETECTORS – MULTIMODE DETECTOR FOR MAXIMUM APPLICATION FLEXIBILITY

- Designed for automation and seamless Biomek integration.
- Unique optics design (patent pending) provides increased sensitivity across all detection modes
- Wide array of detection modes:
 - ~ Top- or Bottom-reading Fluorescence Intensity
 - ~ Time-resolved Fluorescence
 - ~ Fluorescence Polarization
 - ~ Visible and UV Absorbance
 - ~ Glow Luminescence

FLEXIBLE ASSAY DESIGN FOR SYSTEMS BIOLOGY

Take advantage of Beckman Coulter's flexible automation solutions. Our unique combination of dependable, versatile hardware and powerful, yet intuitive software lets you process your assay your way:

Protein Purification

Cell-based Assays

ELISAs

Genetic Analysis



SAMI WORKSTATION EX SOFTWARE



Contact your sales representative to configure a system that meets your needs.

www.beckmancoulter.com/aws



SERVICE AND SUPPORT YOU CAN COUNT ON

From installation and training to ongoing technical assistance, Beckman Coulter's global support network stands ready to assist researchers with all their system support needs. Whether you need support online†, on the phone or on site, our technical experts will help your laboratory maintain optimal research efficiency for years to come. Discover how you can streamline your screening process with the Biomek Assay Workstation.

† Online support available in North America

* All trademarks are the property of their respective owners.



Developing innovative solutions in Systems Biology.

Innovate Automate
SIMPLIFY

Beckman Coulter, Inc. • 4300 N. Harbor Boulevard, Box 3100 • Fullerton, California 92834-3100
Sales & Service: 1-800-742-2345 • Telex: 678413 • Fax: 1-800-643-4366 • www.beckmancoulter.com

Worldwide Biomedical Research Division Offices:

Australia (61) 2 9844-6000 **Canada** (905) 819-1234 **China** (86) 10 6515 6028 **Eastern Europe, Middle East, Africa** (41) 22 994 07 07
France 01 49 90 90 00 **Germany** 49 21 513335 **Hong Kong** (852) 2814 7431/2814 0481 **Italy** 02-953921 **Japan** 03-5404-8359
Mexico 525-605-77-70 **Netherlands** 0297-230630 **Singapore** (65) 6339 3633 **South Africa** (27) 11-805-2014/5 **Spain** 91 3836080
Sweden 08-564 85 900 **Switzerland** 0800 850 810 **Taiwan** (886) 2 2378 3456 **Turkey** 90 216 309 1900 **U.K.** 01494 441181 **U.S.A.** 1-800-742-2345