

## Thermo Scientific Jewett Lab Refrigerators and Freezers

Safe, secure cold storage solutions  
for critical samples and materials

# Researchers worldwide protect more than two billion samples inside Thermo Scientific cold storage equipment.

With proven solutions from +4°C refrigerators to -196°C cryogenic freezers and Thermo Scientific glass and consumables, you're free to concentrate on your work without worrying about your valuable samples.

Critical cold storage applications demand a safe, stable environment with no room for the fluctuation in temperatures found in household or commercial cabinets. Samples are fragile and expensive so you simply can't afford undependable equipment and the challenges a failure could bring.

Thermo Scientific Jewett refrigerators and freezers have been designed to provide worry-free operation and the secure, controlled environment your applications and materials require. Unlike household or commercial cabinets, our Jewett refrigerators and freezers are specifically designed to store high value, critical samples, reagents, vaccines, blood and plasma.



# High-Performance Microprocessor Control System

Our high-performance refrigerators, freezers, blood bank, plasma and pharmacy models offer easy-to-read microprocessor controls featuring advanced setpoints for precise temperature regulation.

**Keyed on/off switch with set point security**



**Microprocessor control system with audio and visual alarms**

**Bright, digital temperature display**



# High-Performance Laboratory Refrigerators and Freezers

Our new high-performance Jewett lab refrigerators and freezers have been designed to provide worry-free operation and the secure, controlled environment your applications and materials require.



Cabinets shown from L to R:  
JLF2330, JLF430, JLF5030 and JLF3030

## Thermo Scientific Jewett High Performance Laboratory Freezers

Setpoint: -30°C (auto defrost)

Model	Cu. Ft. (L)	Voltage (Hz)	Amps/Breaker (Plug)	Cabinet	Door	Shelves	Int. Dimensions* HxDxW inches (mm)	Ext. Dimensions* HxDxW inches (mm)	Ship Weight lb (kg)
JLF430A	4.7 (133)	115 (60)	8.0/15 (P1)	undercounter	single, solid	3	20 x 20.5 x 20 (508 x 521 x 508)	33.4 x 26 x 24 (850 x 660 x 610)	220 (100)
JLF430D		208/230 (60)	6.0/15 (P4)						
JLF430V		230 (50)	6.0/15 (P7)						
JLF430W		230 (50)	6.0/15 (P8)						
JLF1230A	11.5 (326)	115 (60)	8.0/15 (P1)	space saver	single, solid	4	52.4 x 21.75 x 20 (1331 x 533 x 508)	73.6 x 30 x 24 (1869 x 762 x 610)	280 (127)
JLF1230V		230 (50)	8.0/15 (P7)						
JLF1230W		230 (50)	8.0/15 (P8)						
JLF2330A	23.3 (659)	115 (60)	16.0/20 (P2)	upright	single, solid	4	58 x 29 x 24 (1473 x 737 x 610)	79.2 x 37.2 x 28 (2012 x 945 x 711)	425 (193)
JLF2330D		208/230 (60)	12.0/15 (P1)						
JLF2330V		230 (50)	12.0/15 (P7)						
JLF2330W		230 (50)	12.0/15 (P8)						
JLF3030A	29.2 (826)	115 (60)	16.0/20 (P1)	upright	single, solid	4	58 x 29 x 30 (1473 x 737 x 762)	79.2 x 37.2 x 34 (2012 x 945 x 864)	445 (202)
JLF3030D		208/230 (60)	12.0/15 (P4)						
JLF3030V		230 (50)	12.0/15 (P7)						
JLF3030W		230 (50)	12.0/15 (P8)						
JLF5030A	51.1 (1447)	115 (60)	16.0/20 (P1)	upright	double, solid	8	58 x 29 x 52.5 (1473 x 737 x 1334)	79.2 x 37.2 x 56.5 (2012 x 945 x 1435)	600 (272)
JLF5030D		208/230 (60)	12.0/15 (P4)						
JLF5030V		230 (50)	12.0/15 (P7)						
JLF5030W		230 (50)	12.0/15 (P8)						

\* Published interior volumes are nominal; useable cu. ft. (L) capacities may be offset by shelves, drawers, blower coils or cabinet protrusions. For specific cabinet dimensions and allowances, or for verification of clearance tolerances, contact our sales representative. Product performance may be affected by ambient temperature conditions, humidity conditions, sample loading preferences and frequency of door openings. Contact our sales representative for specific inquiries regarding your application. 4.9 cu. ft. model exterior dimensions are without casters.

- High-density CFC-free, blown-in insulation conforms to cabinet shape to reduce gaps and increase temperature uniformity
- Powerful, industrial-grade compressors for optimal product protection
- 1" insulated access port standard
- Positive, forced-air circulation maintains temperature uniformity throughout the cabinet
- Set of four 2" casters included: two locking and two regular
- Environmentally friendly, mercury-free LED interior lighting (lab refrigerators only)
- Adjustable shelves



Optional, inkless, seven day, graphic, chart recorder

Bright, digital temperature display

Microprocessor control system with audio and visual alarms

Spring-loaded, self closing doors with 90° stay-open feature

Hospital-grade plug

Smooth, ergonomic handle

Lockable doors for added sample security

Solid doors are standard; optional glass doors on lab refrigerators

See our offering of undercounter, dual-temperature and pass-thru refrigerators on page 15.

## Thermo Scientific Jewett High Performance Laboratory Refrigerators

Setpoint: +4°C (auto defrost)

Model	Cu. Ft.	Voltage (L)	Amps/Breaker (Hz)	Cabinet (Plug)	Door**	Shelves	Int. Dimensions* HxDxW inches (mm)	Ext. Dimensions* HxDxW inches (mm)	Ship Weight lb (kg)
JLR404A	4.7 (133)	115 (60)	8.0/15 (P1)	undercounter	single, solid	3	20 x 20.5 x 20 (508 x 520 x 508)	33.4 x 26 x 24 (850 x 660 x 610)	220 (100)
JLR404D		208/230 (60)	6.0/15 (P4)						
JLR404V		230 (50)	6.0/15 (P7)						
JLR404W		230 (50)	6.0/15 (P8)						
JLR1204A	11.5 (326)	115 (60)	9.4/15 (P1)	space saver	single, solid	4	52.4 x 21 x 20 (1331 x 552 x 508)	73.6 x 30 x 24 (1869 x 762 x 610)	280 (127)
JLR1204D		208/230 (60)	6.0/15 (P4)						
JLR1204V		230 (50)	6.0/15 (P7)						
JLR1204W		230 (50)	6.0/15 (P8)						
JLR2304A	23.3 (659)	115 (60)	9.4/15 (P1)	upright	single, solid	4	58 x 29 x 24 (1473 x 737 x 610)	79.2 x 37.2 x 28 (2012 x 945 x 711)	370 (168)
JLR2304D		208/230 (60)	6.0/15 (P4)						
JLR2304V		230 (50)	6.0/15 (P7)						
JLR2304W		230 (50)	6.0/15 (P8)						
JLR3004A	29.2 (826)	115 (60)	9.4/15 (P1)	upright	single, solid	4	58 x 29 x 30 (1473 x 737 x 762)	79.2 x 37.2 x 34 (2012 x 945 x 864)	435 (197)
JLR3004D		208/230 (60)	6.0/15 (P4)						
JLR3004V		230 (50)	6.0/15 (P7)						
JLR3004W		230 (50)	6.0/15 (P8)						
JLR5004A	51.1 (1447)	115 (60)	15.0/20 (P1)	upright	double, solid	8	58 x 29 x 52.5 (1473 x 737 x 1334)	79.2 x 37.2 x 56.5 (2012 x 945 x 1435)	585 (265)
JLR5004D		208/230 (60)	8.5/15 (P4)						
JLR5004V		230 (50)	8.5/15 (P7)						
JLR5004W		230 (50)	8.5/15 (P8)						

\*\* Solid doors are standard. See Options section for available glass door alternatives

# High-Performance Blood Bank Refrigerators

Designed to meet the highest international standards for blood bank storage (AABB, ANRC, FDA), our new high-performance blood bank refrigerators are available in five sizes ranging from a convenient undercounter option to a spacious 51.1 cu. ft. (1447L) model for large blood bank requirements.



Cabinets shown from L to R:  
JBB5004, JBB404, JBB3004, JBB1204

## Thermo Scientific Jewett High Performance Blood Bank Refrigerators

Setpoint: +4°C (auto defrost)

Model	Cu. Ft. (L)	Blood Bag Capacity	Voltage (Hz)	Amps/Breaker (Plug)	Cabinet	Door	Drawers
JBB404A	4.7 (133)	64	115 (60)	8.0/15 (P1)	undercounter	single, solid	2
JBB404D			208/230 (60)	6.0/15 (P4)			
JBB404V			230 (50)	6.0/15 (P7)			
JBB404W			230 (50)	6.0/15 (P8)			
JBB1204A	11.5 (326)	192	115 (60)	9.4/15 (P1)	space saver	single, glass	6
JBB1204D			208/230 (60)	6.0/15 (P4)			
JBB1204V			230 (50)	6.0/15 (P7)			
JBB1204W			230 (50)	6.0/15 (P8)			
JBB2304A	23.3 (659)	385	115 (60)	9.4/15 (P1)	upright	single, glass	7
JBB2304D			208/230 (60)	6.0/15 (P4)			
JBB2304V			230 (50)	6.0/15 (P7)			
JBB2304W			230 (50)	6.0/15 (P8)			
JBB3004A	29.2 (826)	426	115 (60)	9.4/15 (P1)	upright	single, glass	6
JBB3004D			208/230 (60)	6.0/15 (P4)			
JBB3004V			230 (50)	6.0/15 (P7)			
JBB3004W			230 (50)	6.0/15 (P8)			
JBB5004A	51.1 (1447)	770	115 (60)	15.0/20 (P2)	upright	double, glass	14
JBB5004D			208/230 (60)	8.5/15 (P4)			
JBB5004V			230 (50)	8.5/15 (P7)			
JBB5004W			230 (50)	8.5/15 (P8)			

\* Published interior volumes are nominal; useable cu. ft. (L) capacities may be offset by shelves, drawers, blower coils or cabinet protrusions. For specific cabinet dimensions and allowances, or for verification of clearance tolerances, contact our sales representative. Product performance may be affected by ambient temperature conditions, humidity conditions, sample loading preferences and frequency of door openings. Contact our sales representative for specific inquiries regarding your application. 4.9 cu. ft. model exterior dimensions are without casters.

- High-density CFC-free, blown-in insulation conforms to cabinet shape, to reduce gaps and increase temperature uniformity
- Powerful, industrial-grade compressors for optimal product protection
- 1" insulated access port standard
- Positive, forced-air circulation maintains temperature uniformity throughout the cabinet
- Set of four 2" casters: two locking and two regular

Spring-loaded, self closing doors with 90° stay-open feature

Lockable doors for added sample security

Hospital-grade plug



Standard inkless, seven day, graphic, chart recorder

Bright, digital temperature display

Microprocessor control system with audio and visual alarms

Environmentally friendly, mercury-free LED interior lighting

Standard safety glass, double-pane doors

Adjustable stainless steel drawers

See our offering of undercounter, dual-temperature and pass-thru blood bank refrigerators on page 15.

Int. Dimensions\* HxDxW  
inches (mm)

Ext. Dimensions\* HxDxW  
inches (mm)

Ship Weight  
lb (kg)

20 x 20.5 x 20 (508 x 520 x 508)

33.4 x 26 x 24 (850 x 660 x 610)

220 (100)

52.4 x 21.75 x 20 (1331 x 552 x 508)

73.6 x 30 x 24 (1869 x 762 x 610)

320 (145)

58 x 29 x 24 (1473 x 737 x 610)

79.2 x 37.2 x 28 (2012 x 925 x 711)

470 (213)

58 x 29 x 30 (1473 x 737 x 762)

79.2 x 36.4 x 34 (2012 x 925 x 864)

505 (227)

58 x 29 x 52.5 (1473 x 737 x 1334)

79.2 x 36.4 x 56.5 (2012 x 925 x 1435)

640 (290)

\*\* Nominal capacity based on 450 mL whole blood bags.

# High-Performance Plasma Freezers

Designed to meet the highest standards for sensitive plasma freezing, our new Jewett high-performance plasma freezers feature easy-to-use microprocessor controls. Available in five sizes ranging from undercounter to 51.1 cu. ft. (1447L), our plasma freezers meet plasma storage requirements large and small.



Cabinets shown from L to R:  
JPL2330, JPL5030, JPL404, JPL1230

## Thermo Scientific Jewett High Performance Plasma Freezers

Setpoint: -30°C (auto defrost)

Model	Cu. Ft. (L)	Plasma Box Capacity	Voltage (Hz)	Amps/Breaker (Plug)	Cabinet	Door	Drawers
JPL404A	4.7 (133)	78	115 (60)	8.0/15 (P1)	undercounter	single, solid	2
JPL430D			208/230 (60)	6.0/15 (P4)			
JPL430V			230 (50)	6.0/15 (P7)			
JPL430W			230 (50)	6.0/15 (P8)			
JPL1230A	11.5 (326)	273	115 (60)	8.0/15 (P1)	space saver	single, solid	7
JPL1230V			230 (50)	8.0/15 (P7)			
JPL1230W			230 (50)	8.0/15 (P8)			
JPL2330A	23.3 (659)	532	115 (60)	16.0/20 (P2)	upright	single, solid	7
JPL2330D			208/230 (60)	12.0/15 (P4)			
JPL2330V			230 (50)	12.0/15 (P7)			
JPL2330W			230 (50)	12.0/15 (P8)			
JPL3030A	29.2 (826)	665	115 (60)	16.0/20 (P2)	upright	single, solid	7
JPL3030D			208/230 (60)	12.0/15 (P4)			
JPL3030V			230 (50)	12.0/15 (P7)			
JPL3030W			230 (50)	12.0/15 (P8)			
JPL5030A	51.1 (1447)	1064	115 (60)	16.0/20 (P2)	upright	double, solid	14
JPL5030D			208/230 (60)	12.0/15 (P4)			
JPL5030V			230 (50)	12.0/15 (P7)			
JPL5030W			230 (50)	12.0/15 (P8)			

\* Published interior volumes are nominal; useable cu. ft. (L) capacities may be offset by shelves, drawers, blower coils or cabinet protrusions. For specific cabinet dimensions and allowances, or for verification of clearance tolerances, contact our sales representative. Product performance may be affected by ambient temperature conditions, humidity conditions, sample loading preferences and frequency of door openings. Contact our sales representative for specific inquiries regarding your application. 4.9 cu. ft. model exterior dimensions are without casters.



- High-density CFC-free, blown-in insulation conforms to cabinet shape, to reduce gaps and increase temperature uniformity
- Powerful, industrial-grade compressors for optimal product protection
- 1" insulated access port standard
- Positive, forced-air circulation maintains temperature uniformity throughout the cabinet
- Set of four 2" casters: two locking and two regular
- Adjustable stainless steel drawers



Standard inkless, seven day, graphic, chart recorder

Bright, digital temperature display

Microprocessor control system with audio and visual alarms

Smooth, ergonomic handle

Pre-set -30°C cabinets

Lockable doors for added sample security

Hospital-grade plug

Int. Dimensions\* HxDxW inches (mm)

Ext. Dimensions\* HxDxW inches (mm)

Ship Weight lb (kg)

20 x 20.5 x 20 (508 x 521 x 508)

33.4 x 26 x 24 (850 x 660 x 610)

220 (100)

52.4 x 21 x 20 (1331 x 533 x 508)

73.6 x 30 x 24 (1869 x 762 x 610)

365 (145)

58 x 29 x 24 (1473 x 737 x 610)

79.2 x 37.2 x 28 (2012 x 945 x 711)

425 (193)

58 x 29 x 30 (1473 x 737 x 762)

79.2 x 37.2 x 34 (2012 x 945 x 864)

580 (263)

58 x 29 x 52.5 (1473 x 737 x 1334)

79.2 x 37.2 x 56.5 (2012 x 945 x 1435)

600 (272)

\*\* Nominal capacity based on 250 mL plasma boxes.

# High-Performance Pharmacy Refrigerators

Configured for accurate storage and easy retrieval of pharmacy products, our pharmacy refrigerators feature full-extension, stainless steel roll-out drawers and standard glass doors. Developed for stable temperature control over a range of +1°C to +8°C, these refrigerators are available in three sizes.



Cabinets shown from L to R:  
JPR5004, JPR2304, JPR3004

## Thermo Scientific Jewett High Performance Pharmacy Refrigerators

Setpoint: +4°C (auto defrost)

Model	Cu. Ft. (L)	Voltage (Hz)	Amps/Breaker (Plug)	Cabinet	Door	Drawers
JPR2304A	23.3 (659)	115 (60)	9.4/15 (P1)	upright	single, glass	6
JPR2304D		208/230 (60)	6.0/15 (P4)			
JPR2304V		230 (50)	6.0/15 (P7)			
JPR2304W		230 (50)	6.0/15 (P8)			
JPR3004A	29.2 (826)	115 (60)	9.4/15 (P1)	upright	single, glass	6
JPR3004D		208/230 (60)	6.0/15 (P4)			
JPR3004V		230 (50)	6.0/15 (P7)			
JPR3004W		230 (50)	6.0/15 (P8)			
JPR5004A	51.1 (1447)	115 (60)	15.0/20 (P2)	upright	double, glass	12
JPR5004D		208/230 (60)	8.5/15 (P4)			
JPR5004V		230 (50)	8.5/15 (P7)			
JPR5004W		230 (50)	8.5/15 (P8)			

\* Published interior volumes are nominal; useable cu. ft. (L) capacities may be offset by shelves, drawers, blower coils or cabinet protrusions. For specific cabinet dimensions and allowances, or for verification of clearance tolerances, contact our sales representative. Product performance may be affected by ambient temperature conditions, humidity conditions, sample loading preferences and frequency of door openings. Contact our sales representative for specific inquiries regarding your application.

- High-density CFC-free, blown-in insulation conforms to cabinet shape to reduce gaps and increase temperature uniformity
- Powerful, industrial-grade compressors for optimal product protection
- 1" insulated access port standard
- Positive, forced-air circulation maintains temperature uniformity throughout the cabinet
- Set of four 2" casters: two locking and two regular

Spring-loaded, self closing doors with 90° stay-open feature

Lockable doors for added sample security

Hospital-grade plug



Optional, inkless, seven day, graphic, chart recorder

Bright, digital temperature display  
Microprocessor control system with audio and visual alarms

Environmentally friendly, mercury-free LED interior lighting

Safety glass, double-pane doors

Adjustable stainless steel drawers

Int. Dimensions\* HxDxW  
inches (mm)

Ext. Dimensions\* HxDxW  
inches (mm)

Ship Weight  
lb (kg)

58 x 29 x 24 (1473 x 737 x 610)

79.2 x 36.4 x 28 (2012 x 925 x 711)

470 (213)

58 x 29 x 30 (1473 x 737 x 762)

79.2 x 36.4 x 34 (2012 x 925 x 864)

505 (227)

58 x 29 x 52.5 (1473 x 737 x 1334)

79.2 x 36.4 x 56.5 (2012 x 925 x 1435)

640 (290)

# High-Performance Options and Accessories

Productive use of our Jewett high-performance refrigerators or freezers can be enhanced with options and accessories specially designed to improve utility and convenience. Many accessories are factory installed and must be specified with your original order. Field installed accessories may require the services of a factory authorized technician. Some accessories or options may affect refrigerator or freezer performance. For more information, contact your sales representative.

## **Glass Doors**

Solid doors are offered standard on refrigerators except blood bank and pharmacy units. Optional dual-pane glass doors must be specified when ordering. Contact your representative for information on heated glass doors.

## **Shelves**

Additional epoxy-coated, open-wire shelves are designed to fit individual cabinets; shelves are available in full and half sizes. Undercounter models use full-size only.

## **Roll-Out Drawers**

Optional stainless steel drawers offered as an alternative to standard open wire shelving are adjustable with full extension. Drawers are factory installed and must be specified when ordering cabinet.

## **Surge Suppressor**

Surge suppressors provide additional protection against voltage transients which may damage refrigeration or control components. Independent module requires field installation by a qualified electrician or factory authorized service technician. Model number and voltage must be specified with order.

## **Temperature Chart Recorders**

Optional 6" (152 mm) chart, 7-day temperature recorders use pressure-sensitive chart paper; one box per 50 charts included. Built-in recorders must be specified when ordering. Recorders are standard on 11.5 cu. ft. (326 L) and larger blood bank refrigerators and plasma freezers.

## **Automatic Alarm Telephone Dialer**

The deluxe electronic remote alarm can be programmed to sound an alarm in the event of a temperature increase or power failure.

- Can dial up to four telephone numbers
- Advises of an alarm condition across any telephone system which accepts pulse dialing
- One system can monitor up to four individual freezers or up to three groups of freezers
- Available for 115V/60Hz only

## **Remote Alarm Module**

For audible and visual signal in the event of temperature rise or power failure. Can be located up to 1760 feet (536 meters) from cabinet. Must be used with electronic alarm system and connected to normally open or normally closed remote alarm contacts; wire not included.

## **Alarm Delay Module**

Eliminates nuisance alarms due to intermittent or transitory conditions such as lighting or brief power outages. The adjustable delay requires an alarm condition to exist continuously for a pre-determined amount of time (adjustable) before a signal is released to a central alarm/monitoring system or telephone dialer.

## **Digital Temperature Monitor**

Simple, accurate and cost-effective, the digital temperature and power monitor provides both alarm/monitoring and digital temperature display in a single, self-contained unit. Standard features include high alarm, alarm mute and chirp, audio delay timer, remote alarm contacts (SPDT), Ni-Cad battery backup and low voltage AC power supply (120V, AC).

- Can be installed on or adjacent to any refrigerator or freezer
- Activates an audible and visual warning
- Choose from single probe digital or multi-probe, microprocessor-based models
- Temperature range is -100°C to +25°C
- Probe size: 1.25" L x 0.25" D (32 mm x 6 mm)

# Thermo Scientific Jewett High-Performance Accessories



	4.7 cu. ft. (133 L)	11.5 cu. ft. (326 L)	23.3 cu. ft. (659 L)	29.2 cu. ft. (826 L)	51.1 cu. ft. (1447 L)
<b>Shelves</b>					
	<b>Model No.</b>				
epoxy-coated, full size	7125	7125	6696	6695	6696
epoxy-coated, half size	n/a	n/a	6698	6697	6698
<b>Door Options</b>					
LH swing, solid	7119	6995	6997	6999	n/a
LH swing, glass	n/a	6996	6998	7000	n/a
LH swing, heated glass	n/a	7073	7075	7087	n/a
RH swing, solid**	standard	standard	standard	standard	n/a
RH swing, glass	7118	7066	7012	7013	n/a
RH swing, heated glass	n/a	7074	7086	7088	n/a
LH/LH swing, solid	n/a	n/a	n/a	n/a	7001
LH/LH swing, glass	n/a	n/a	n/a	n/a	7067
LH/LH swing, heated glass	n/a	n/a	n/a	n/a	7089
RH/RH swing, solid	n/a	n/a	n/a	n/a	7068
RH/RH swing, glass	n/a	n/a	n/a	n/a	7069
RH/RH swing, heated glass	n/a	n/a	n/a	n/a	7090
LH/RH swing, solid	n/a	n/a	n/a	n/a	standard
LH/RH swing, glass	n/a	n/a	n/a	n/a	7014
LH/RH swing, heated glass	n/a	n/a	n/a	n/a	7091
Pyxis® door adapter	7483TA	n/a	n/a	n/a	n/a
<b>Roll-Out Drawers – Complete Set</b>					
	<b>Model No. (qty)</b>				
Refrigerator	7134 (2)	7445 (5)	6699 (6)	6704 (6)	6700 (12)
Freezer	7134 (2)	7446 (7)	6699 (6)	6704 (6)	6700 (12)
Additional Refrigerator and Freezer (single drawers)	n/a	n/a	6702	6725	6702
<b>Casters (2" casters standard on high-performance cabinets)</b>					
3" casters (76 mm), set of 4*	6041-1	6041-1	6041-1	6041-1	6041-1
<b>Finishes (adds 1" or 25 mm to unit height)</b>					
Stainless steel interior	7116	6199	6115	6709	6116
<b>Temperature Chart Recorders</b>					
Built-in, factory installed***	n/a	6183-7	6183-7	6183-7	6183-7
Free-standing, customer installed	6383-7	6383-7	6383-7	6383-7	6383-7
Replacement chart paper, -40 to +25 box of 50	6184	6184	6184	6184	6184
<b>Surge Suppressor</b> (specify voltage with order)	6402	6402	6402	6402	6402
<b>Automatic Alarm Telephone Dialer</b>					
Requires dedicated phone line	6224	6224	6224	6224	6224
<b>Remote Alarm Module</b> (specify voltage with order)	5612-A	5612-A	5612-A	5612-A	5612-A
<b>Alarm Delay Module</b> (specify voltage with order)	6903	6903	6903	6903	6903
<b>Digital Temperature Monitor</b> (specify voltage with order)	6898	6898	6898	6898	6898
<b>4-20 milliamp transmitter (freezers)****</b>	4706	4706	4706	4706	4706
<b>4-20 millilamp transmitter (refrigerators)****</b>	6907	6907	6907	6907	6907

\* Casters are shipped with the cabinet but must be installed upon delivery

\*\* Exception: Pharmacy, Chromatography and Blood Bank refrigerators come with glass doors as standard

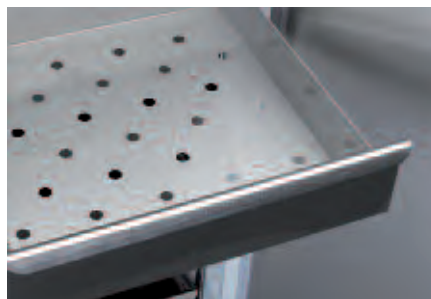
\*\*\* Chart recorders are standard on all Blood Bank Refrigerators and Plasma Freezers

\*\*\*\* Includes probe and mounted transmitter with current signal proportional to temperature

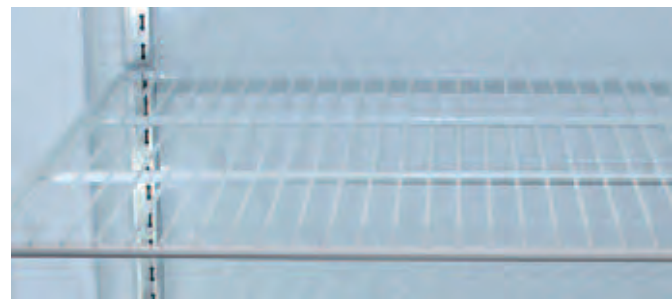
## Temperature Recorder



## Roll-Out Drawers



## Shelves



# Dual-Temperature Refrigerator/Freezer Combinations

Our dual-temperature refrigerator/freezer combination is fully-equipped for general purpose storage requirements

- Upright model with operating temperatures of +2°C to +4°C (refrigerator) and -20°C (freezer)



## Pass-Thru Refrigerators

Our pass-thru refrigerators offer convenience when multiple entry points are required. Available on select blood bank and laboratory applications.

## Undercounter Refrigerators/Freezers

Our counter-high refrigerators and freezers provide dependable storage and premium performance for surgical suites, emergency/recovery rooms and satellite laboratories. All come with easy to clean stainless steel interior and exteriors.



## Thermo Scientific Jewett Undercounter Refrigerators/Freezers

Undercounter Models	Description	Temperature Set Point °C/F	Cu. Ft. (L)	Voltage (Hz)	Amps	Door	Shelves	Exterior Dimensions H x W x D inches (mm)	Interior Dimensions H x W x D inches (mm)	Shipping Weight lbs (kg)
UC5B-1B	lab refrigerator	2-4 (36-39)	5.4 (153)	120 (60)	3.2	1 solid	2	34.5 x 24 x 24.3 (876 x 610 x 613)	20.4 x 19.4 x 21.5 (518 x 492 x 546)	210 (95)
UC5B-2A**	lab refrigerator	2-4 (36-39)	5.4 (153)	230 (50)	1.6	1 solid	2	34.5 x 24 x 24.3 (876 x 610 x 613)	20.4 x 19.4 x 21.5 (518 x 492 x 546)	210 (95)
CT1-1B	blood bank (68 bags*)	2-4 (36-39)	5.4 (153)	120 (60)	3.2	1 solid	2 drawers	36 x 24 x 24.1 (914 x 610 x 613)	20.4 x 19.4 x 21.5 (518 x 492 x 546)	225 (102)
CT1-2A**	blood bank (68 bags*)	2-4 (36-39)	5.4 (153)	230 (50)	1.6	1 solid	2 drawers	36 x 24 x 24.1 (914 x 610 x 613)	20.4 x 19.4 x 21.5 (518 x 492 x 546)	225 (102)
CTF306-1B	plasma freezer (96 300ml bags)	-30 (-22)	5.4 (153)	120 (60)	8	1 solid	2 drawers	36 x 24 x 24.1 (914 x 610 x 613)	20.4 x 19.4 x 21.5 (518 x 492 x 546)	250 (141)
CTF306-2A**	plasma freezer (96 300ml bags)	-30 (-22)	5.4 (153)	230 (50)	4	1 solid	2 drawers	36 x 24 x 24.1 (914 x 610 x 613)	20.4 x 19.4 x 21.5 (518 x 492 x 546)	250 (141)

## Thermo Scientific Jewett Pass-Thru Refrigerators\*\*\*

Pass Thru Models	Description	Temperature Set Point °C/F	Cu. Ft. (L)	Voltage (Hz)	Amps	Total Doors	Shelves	Exterior Dimensions H x W x D inches (mm)	Interior Dimensions H x W x D inches (mm)	Shipping Weight lbs (kg)
LR25D-1B	lab refrigerator	2-4 (36-39)	24.8 (702)	120 (60)	8	2 glass	5	84 x 29 x 36 (2134 x 737 x 914)	59.8 x 24.8 x 29.5 (1514 x 629 x 749)	560 (254)
LR25D-2A**	lab refrigerator	2-4 (36-39)	24.8 (702)	230 (50)	4	2 glass	5	84 x 29 x 36 (2134 x 737 x 914)	59.8 x 24.8 x 29.5 (1514 x 629 x 749)	560 (254)
LR55D-1B	lab refrigerator	2-4 (36-39)	55 (1558)	120 (60)	12.3	4 glass	10	84 x 59 x 36 (2134 x 1449 x 914)	59.8 x 54.8 x 29.5 (1514 x 1391 x 749)	950 (431)
LR55D-2A**	lab refrigerator	2-4 (36-39)	55 (1558)	230 (50)	6.1	4 glass	10	84 x 59 x 36 (2134 x 1449 x 914)	59.8 x 54.8 x 29.5 (1514 x 1391 x 749)	950 (431)
BBR25D-1B	blood bank (462 bags*)	2-4 (36-39)	24.8 (702)	120 (60)	8.9	2 glass	7 drawers	84 x 29 x 36 (2134 x 737 x 914)	59.8 x 24.8 x 29.5 (1514 x 629 x 749)	560 (254)
BBR25D-2A**	blood bank (462 bags*)	2-4 (36-39)	24.8 (702)	230 (50)	4.5	2 glass	7 drawers	84 x 29 x 36 (2134 x 737 x 914)	59.8 x 24.8 x 29.5 (1514 x 629 x 749)	560 (254)
BBR55D-1B	blood bank (924 bags*)	2-4 (36-39)	55 (1558)	120 (60)	12.2	4 glass	14 drawers	84 x 59 x 36 (2134 x 1449 x 914)	59.8 x 54.8 x 29.5 (1514 x 1391 x 749)	1020 (464)
BBR55D-2A**	blood bank (924 bags*)	2-4 (36-39)	55 (1558)	230 (50)	6.1	4 glass	14 drawers	84 x 59 x 36 (2134 x 1449 x 914)	59.8 x 54.8 x 29.5 (1514 x 1391 x 749)	1020 (464)

## Thermo Scientific Jewett Dual-Temperature Refrigerators/Freezers

Dual Temp. Models	Description	Temperature Set Point °C/F	Cu. Ft. (L) Refrigerator/ Freezer	Voltage (Hz)	Amps	Door Refrigerator/ Freezer	Shelves	Exterior Dimensions H x W x D inches (mm)	Interior Dimensions H x W x D inches (mm)	Shipping Weight lbs (kg)
PRF17-1B	dual-temperature refrigerator/freezer	freezer -20 (-4) ref. 2-4 (36-39)	11 (311.4)/ 4.7 (133)	120 (60)	10.5	2	3 drawers/ 1 shelf	73.9 x 29 x 30 (1876 x 737 x 762)	50.8 x 24.8 x 24 (1286 x 629 x 610)	550 (249)
PRF17-2A**	dual-temperature refrigerator/freezer	freezer -20 (-4) ref. 2-4 (36-39)	11 (311.4)/ 4.7 (133)	230 (50)	6	2	3 drawers/ 1 shelf	73.9 x 29 x 30 (1876 x 737 x 762)	50.8 x 24.8 x 24 (1286 x 629 x 610)	550 (249)

## Accessories for Thermo Scientific Jewett Dual-Temperature, Undercounter and Pass-Thru

For Model No.	Stainless Steel Interior	Stainless Steel Exterior	Glass Door	Solid Door	Drawer Set (Drawers)	Additional Extra Drawer	Shelf Set (Shelves)	Additional Shelf	Right Door Swing	Left Door Swing	Casters	Port Hole	Integrated 7ER Chart Recorder	Integrated HemaPro 2000 Surveillance Center	Freestanding CP101 with 7ER and HemaPro 101
UC5B	Std	Std	n/a	Std	7409 (2)	n/a	Std	7410TA	Std	7467TA	n/a	Std	n/a	n/a	7474TA
CT1	Std	Std	n/a	Std	Std	7484TA and 7475TA	7380TA (2)	7410TA	Std	7467TA	n/a	Std	n/a	n/a	Std
CTF306	Std	Std	n/a	Std	Std	7475TA	7380TA (2)	7410TA	Std	7467TA	n/a	Std	n/a	n/a	Std
LR25D	Std	n/a	7458TA	Std	7460TA (7)	7462TA	Std	7465TA	7478TA	7468TA	n/a	n/a	7471TA	7472TA	n/a
LR55D	Std	n/a	7459TA	Std	7461TA (14)	7462TA	Std	7465TA	n/a	n/a	n/a	n/a	7471TA	7472TA	n/a
BBR25D	Std	n/a	Std	n/a	Std	7462TA	7464TA (5)	7465TA	7480TA	7477TA	n/a	n/a	Std	Std	n/a
BBR55D	Std	n/a	Std	n/a	Std	7462TA	7476TA (10)	7465TA	n/a	n/a	n/a	n/a	Std	Std	n/a
PRF17	Std	n/a	n/a	Std	Std	7463TA	n/a	7466TA	Std	7470TA	Std	Std	n/a	n/a	n/a

\* Capacity of 450ml blood bags

\*\* Not CE marked.

\*\*\* For pass-thru refrigerators, the standard configuration on a single door unit is RH control side and LH opposite side. For a double-door unit, the standard is LH/RH both sides.

To change pass-thru unit door configuration, order the option from the table above. For example: option 7478TA will give two right hand door swings on a LR25D.

7481TA will give BBR55D RH/RH door swings on both sides of the unit.

## Surveillance, Monitoring and Validation Systems

### HemaPro 2000™ Surveillance Center

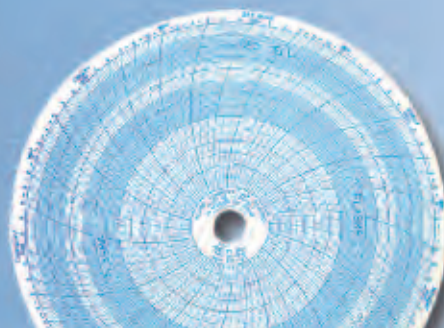
- High visibility display of upper and lower temperatures
- User-adjustable high/low temperature alarms
- Door ajar and condenser efficiency alarms
- Battery back-up maintains alarm functions in the event of power loss
- Event log automatically records time, date and duration of alarm conditions
- Peltier-powered alarm probe for true temperature alarm simulation
- RS232 serial port for data download to PC and remote alarm connections

### HemaPro 101 Monitor

- Bright, easy-to-read digital temperature display
- Power and temperature monitoring functions
- Audible/visual alerts to unsafe conditions
- Temperature calibration test
- Battery back-up and remote alarm connections

### 7ER Temperature Chart Recorder

- 7-day temperature recording on easy-to-read circular charts
- Battery back-up for continuous recording during power loss
- Available as an easy-view wall-mounted unit



- Our cold storage products are available to meet many electrical requirements. Please specify voltage when ordering.
- Published interior volumes are nominal, and usable capacities may be offset by shelves, loading preferences and storage methods.
- All specifications are subject to change without notice.

© 2010 Thermo Fisher Scientific Inc. All rights reserved. Pyxis is a registered trademark of Care Fusion Corporation or one of its subsidiaries. All other trademarks are the property of Thermo Fisher Scientific Inc. and its subsidiaries. Specifications, terms and pricing are subject to change. Not all products are available in all countries. Please consult your local sales representative for details.

**North America:** USA/Canada +1 866 984 3766 (866-9-THERMO)

[www.thermoscientific.com/cold](http://www.thermoscientific.com/cold)

**Europe:** Austria +43 1 801 40 0, Belgium +32 2 482 30 30, France +33 2 2803 2180, Germany national toll free 08001-536 376, Germany international +49 6184 90 6940, Italy +39 02 02 95059 434-254-375, Netherlands +31 76 571 4440, Nordic/Baltic countries +358 9 329 100, Russia/CIS +7 (812) 703 42 15, Spain/Portugal +34 93 223 09 18, Switzerland +41 44 454 12 12, UK/Ireland +44 870 609 9203

**Asia:** China +86 21 6865 4588 or +86 10 8419 3588, India toll free 1800 22 8374, India +91 22 6716 2200, Japan +81 45 453 9220,

Other Asian countries +852 2885 4613

**Countries not listed:** +49 6184 90 6940 or +33 2 2803 2180