

**OLYMPUS**<sup>®</sup>

Your Vision, Our Future

OEM Microscope Components

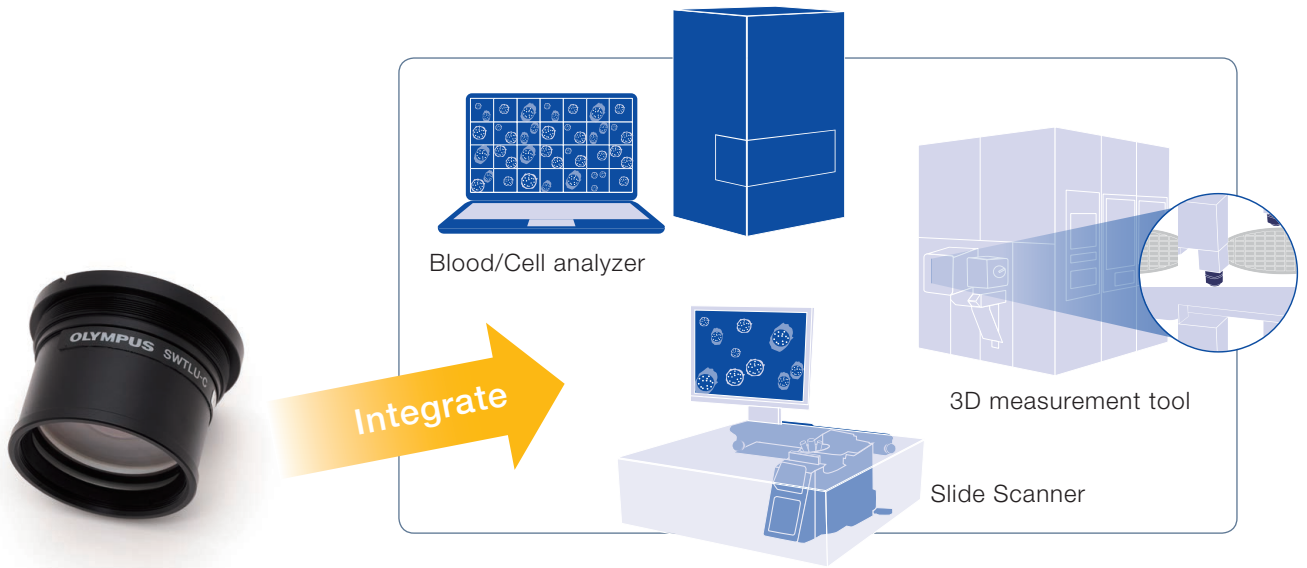
**SWTLU-C**

Tube Lens Unit

# Smart Solutions for Optical Design



# A Compact Tube Lens with a Super Wide Field of View




As the chip size of microscope cameras increases, so does the demand for optics that provide a super wide field of view. Olympus' SWTLU-C compact, super-wide tube lens and super-wide UIS2 objectives meet that demand with homogenous, flat images with negligible aberration across a field of view up to 26.5 mm. Compact and lightweight, the SWTLU-C tube lens is easy to integrate into your optical system.



Combine the tube lens with UIS2 objectives

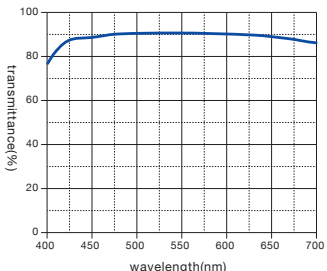
**LMPLFLN50x**

**Specifications**



N.A.	W.D.	F.N.
0.50	10.6	26.5

**Transmittance/Wavelength**



Specification Information available on the Olympus website

# Higher-Quality, Super-Wide Images

## Excellent aberration correction

When used with UIS2 objectives, the SWTLU-C tube lens provides advanced image quality with less spherical and chromatic aberration.

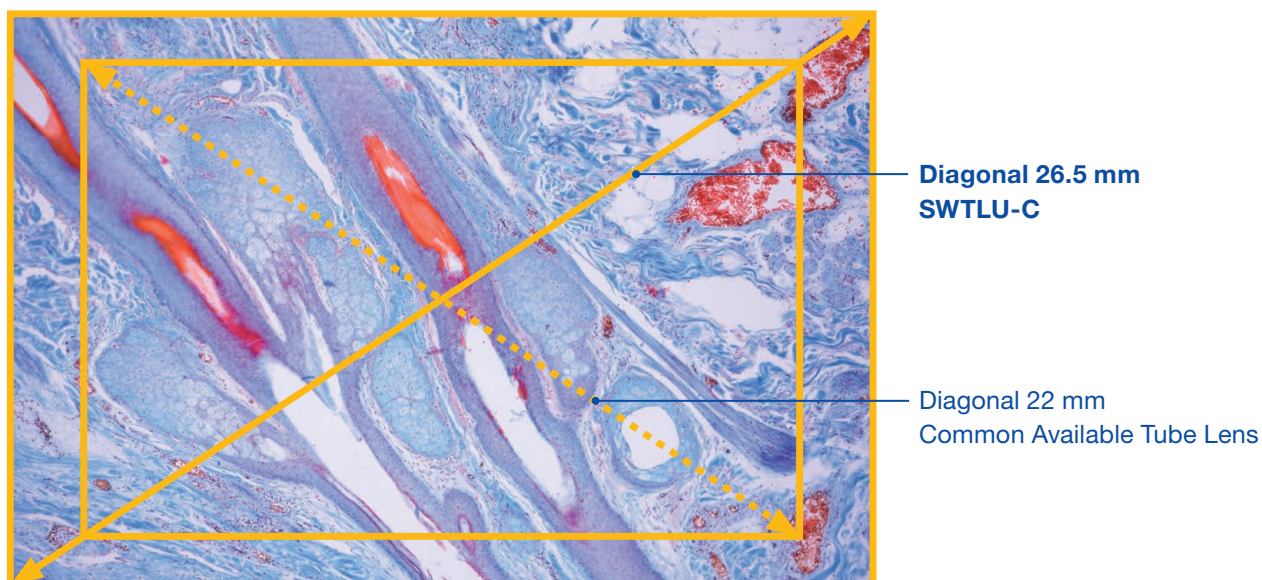
## Super-wide 26.5 mm field of view

The tube lens enables more data to be collected in each image while providing flat, uniform image quality in a 26.5 mm field of view.

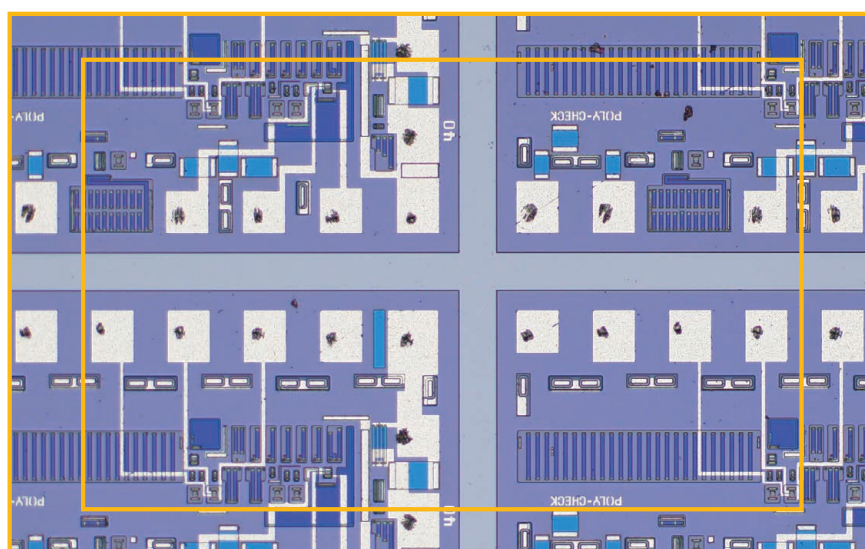
## Customize your optics with Olympus components

Insert other optical components between the UIS2 objectives and the tube lens while maintaining undistorted images.

### A common tube lens (22 mm) compared to the SWTLU-C (26.5 mm)



Application image for Life Science



Application image for Industrial

# Easy to Implement

## Universal attachment

Mount the tube lens unit (SWTLU-C) using a standard M41 x 0.5 thread.

## f180 tube lens

With 180 mm focal length, the tube lens unit is designed to pair with UIS2 objectives.

## Compact

The SWTLU-C is much smaller than other tube lenses, enabling flexible instrumentation integration.



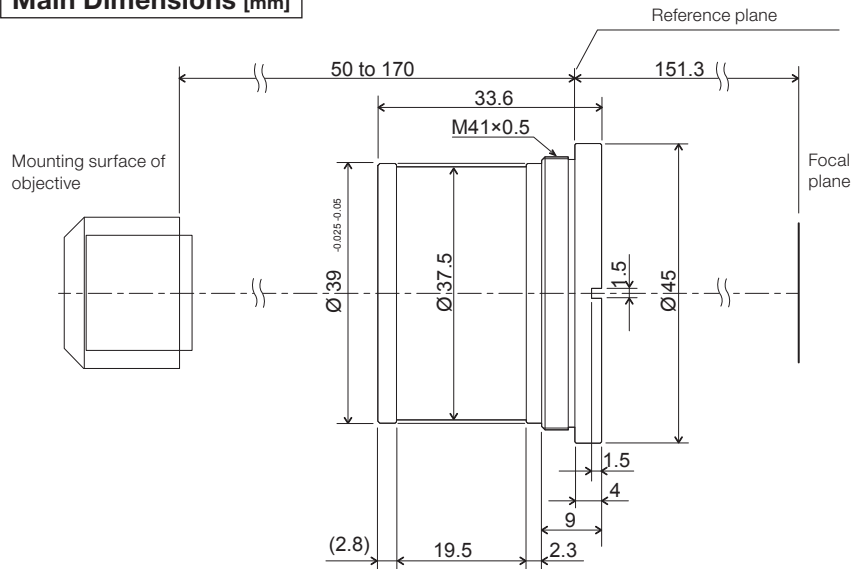
## Specifications

<b>Product Name</b>	SWTLU-C
<b>Dimension</b>	$\phi$ 45 x 33.6 mm
<b>Weight</b>	94 g
<b>Projection Area</b>	26.5 mm <sup>*1)</sup>
<b>Focal length f</b>	180 mm
<b>Magnification</b>	1X <sup>*2)</sup>
<b>Focal Plane Position</b>	151.3 mm from the reference plane
<b>Mounting Thread</b>	M41 x 0.5 mm
<b>Mounting Method</b>	Screw In

\*1) In combinations with FN26.5 Objectives

\*2) In combination with UIS2 Objectives (designed for f180 mm tube lens)

## Main Dimensions [mm]



[www.olympus-lifescience.com/oem-component/](http://www.olympus-lifescience.com/oem-component/)  
[www.olympus-ims.com/component/](http://www.olympus-ims.com/component/)

- OLYMPUS CORPORATION is ISO14001 certified.
- OLYMPUS CORPORATION is ISO9001 certified.
- All company and product names are registered trademarks and/or trademarks of their respective owners.
- Images on the PC monitors are simulated.
- Specifications and appearances are subject to change without any notice or obligation on the part of the manufacturer.

**OLYMPUS**<sup>®</sup> OLYMPUS CORPORATION