



*The Ultimate Versatility in
Microcentrifugation.*

MICROFUGE® 18 AND 22R



24 x 1.5 mL
Routine Pelleting



30 x 1.5 mL
Spins Tubes at 21,920 x g



40 x 250 µL
Spins Lots of PCR Tubes*



12 x 8
(200 µL) Strips
Reduce Your Run Times by Half

24 x 1.5 mL
Swinging-Bucket Rotor
Flat Pelleting — 24 Tubes at One Time

fast

MICROFUGE® 18

FAST...

Now features:

- Soft Start/Soft Stop

Powerful g-force for Fast Pelleting

- Maintenance-free motor spins up to 14,000 rpm (18,000 x g)

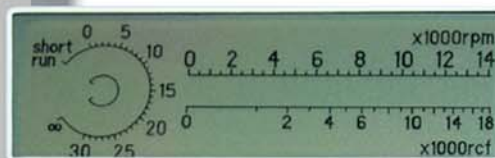
Compact Design

Added Value

- Comes complete with a 24-place, autoclavable fixed-angle rotor (F241.5P) with snap-on lid

Easy to Read Interface

- Displays both speed (rpm) and force (rcf)



24 x 1.5 mL Rotor (F241.5P)
367187



Optional aerosol-tight lid available
367207

BOTH FEATURE:

Powerful g-forces

- High g-forces to accelerate pelleting of DNA, RNA and Proteins
- Virus Cell Isolation

Whisper Quiet Operation

- Maintenance-free brushless motor
- 58 dBa

Runtime

- Select Timed, Hold or Pulse (Short Run)

MICROFUGE 22R

FAST, COOL AND VERSATILE

High g-force for Fast Pelleting

- Maintenance-free motor spins up to 14,000 rpm (21,920 x g)

Interchangeable Rotors

- All rotors can be used with aerosol-tight lids
- All rotors are autoclavable at 121°C

Cool

- Maintains 4°C at maximum speed
- Stand-by cooling



Rotor for Microfuge 18 and 22R

24 x 1.5 mL Rotor (F241.5P)

- 14,000 rpm (17,970 x g)
- Routine Applications
- Snap-on lid standard

Rotors for Microfuge 22R

12 x 8 (200 µL) PCR Tube Strip Rotor (F12x8.2)

High Capacity / High-Power

- 20,800 x g
- Acceleration time 38 sec
- Deceleration time 35 sec

30 x 1.5 mL Rotor (F301.5)

- 14,000 rpm (21,920 x g)
- Ideal for pelleting nucleic acids, proteins and viruses
- Aerosol-tight lid standard; snap-on lid optional

40 x 250 µL Rotor (F40.25)

- 14,000 rpm (17,500 x g)
- Great for spinning 0.25/0.40 mL PCR tubes
- Aerosol-tight lid standard; snap-on lid optional

24 x 1.5 mL Swinging-Bucket Rotor (S241.5)

- 14,000 rpm (16,220 x g)
- Provides flat pelletization for DNA precipitations and immunoprecipitations

*PCR is licensed under US patent numbers 4,683,202, 4,683,195, 4,965,188 and 5,075,216 or their foreign counterparts owned by Hoffmann-La Roche and F. Hoffmann-La Roche Ltd.



12 x 8 PCR Tube Strip
(F12x8.2) 369534

30 x 1.5 mL Rotor
(F301.5) 368894

40 x 250 µL Rotor
(F40.25) 368898

24 x 1.5 mL Swinging-Bucket Rotor
(S241.5) 368882



ORDERING INFORMATION

	CATALOG No.	DESCRIPTION
Microfuge® 18 w/F241.5P	367160	50/60 Hz, 100/120V
Microfuge 18 w/F241.5P	367161	50 Hz, 230V
Microfuge 22R w/F241.5P	368830	60 Hz, 120V
Microfuge 22R w/F241.5P	368831	50 Hz, 230V
Microfuge 22R w/F241.5P	368832	50/60 Hz, 100V
Microfuge 22R	368826	60 Hz, 120V
Microfuge 22R	368827	50 Hz, 230V
Microfuge 22R	368828	50/60 Hz, 100V

SPECIFICATIONS


	MICROFUGE 18	MICROFUGE 22R
Refrigeration	N/A	Yes; CFC-free refrigerant
Maximum Speed	14,000 rpm adjustable in 500 rpm increments	14,000 rpm adjustable in 500 rpm increments
Maximum g-force	18,000 x g	21,920 x g
Maximum Capacity	24 x 2 mL (48 mL)	30 x 2.2 mL (66 mL)
Runtime	0-30 min, continuous or pulse (short run)	0-30 min, continuous or pulse (short run)
Drive	Maintenance-free brushless induction drive	Maintenance-free brushless induction drive
Noise Level at Max Speed	≤ 58 dBA	≤ 58 dBA
Accel/Decel Time to Max Speed	≤ 18 sec accel/19 sec decel (fully loaded)	≤ 18 sec accel/19 sec decel (fully loaded)
Temperature Range	N/A	-10°C to +40°C
Operating Temperature	N/A	4°C to ambient
Dimensions (W x D x H)	24 cm x 32 cm x 24.5 cm (9.5 in x 12.6 in x 9.7 in)	36.5 x 58.5 x 30 cm (14.4 in x 23 in x 11.8 in)
Weight	13 kg (28.7 lbs)	41 kg (90.4 lbs)

ROTORS

ROTOR TYPE	CATALOG No.	MAX SPEED (rpm)	MAX FORCE AT R MAX. (g)	VOLUME	FOR USE IN:
F241.5P Microfuge Fixed-Angle Polypropylene Rotor, with snap-on lid	367187 ^{†**}	14,000	17,970	24 x 1.5/2 mL	Microfuge 18 & 22R
F241.5 Microfuge Fixed-Angle Aluminum Rotor, with aerosol-tight plastic “see-through” lid	365630 [†]	14,000	17,970	24 x 1.5/2 mL	Microfuge 22R
F12x8.2 PCR Fixed-Angle Aluminum Tube Strip Rotor, with aerosol-tight lid	369534	14,000	20,800	12 x 8 (200 µL) PCR Tube Strip	Microfuge 22R
 F301.5 Microfuge Fixed-Angle Aluminum Rotor with BioSafe lid	368894 [†]	14,000	21,920	30 x 1.5/2 mL	Microfuge 22R
 F40.25 Microfuge Fixed-Angle Aluminum Rotor, with BioSafe lid	368898	14,000	17,500	40 x 0.25/0.40 mL	Microfuge 22R
S241.5 Microfuge Swinging-Bucket Aluminum Rotor, with aerosol-tight lid	368882 [†]	14,000	16,220	24 x 1.5/2 mL	Microfuge 22R
Aerosol-Tight Lid for Fixed-Angle Polypropylene Rotor (367187)	367207	N/A	N/A	N/A	Microfuge 18 & 22R
Snap-on Rotor Lid for 1.5 mL/2 mL Fixed-Angle Aluminum Rotor (365630) or for 40 x 0.25 mL/0.40 mL Fixed-Angle Aluminum Rotor (368898)	369549	N/A	N/A	N/A	Microfuge 22R

[†] Can spin 0.25/0.40 mL tubes with adapters (361247) or 0.50/0.70 mL tubes with adapters (364690)

** Included with Microfuge 18 and 22R

 BioSafe is a term intended to describe the enhanced Biosafety features of our products. Validation of microbiological containment was done at an independent, third-party testing facility, Health Protection Agency, Porton Down. Improper use or maintenance may affect seal integrity and, thus, containment

For any additional rotor and adapter information, visit us at:
www.beckmancoulter.com/centrifugefirst



Developing innovative solutions in Systems Biology.

Innovate Automate
SIMPLIFY

Beckman Coulter, Inc. • 4300 N. Harbor Boulevard, Box 3100 • Fullerton, California 92834-3100
 Sales & Service: 1-800-742-2345 • Telex: 678413 • Fax: 1-800-643-4366 • www.beckmancoulter.com

Worldwide Biomedical Research Division Offices:

Australia (61) 2 9844-6000 Canada (905) 819-1234 China (86) 10 6515 6028 Eastern Europe, Middle East, North Africa (41) 22 994 07 07
 France 01 49 90 90 00 Germany 49 21 513335 Hong Kong (852) 2814 7431/2814 0481 Italy 02-953921 Japan 03-5404-8359
 Mexico (55) 560-57770 Netherlands 0297-230630 Singapore (65) 6339 3633 South Africa, Sub-Saharan Africa (27) 11-805-2014/5 Spain 91 3836080
 Sweden 08-564 85 900 Switzerland 0800 850 810 Taiwan (886) 2 2378 3456 Turkey 90 216 309 1900 U.K. 01494 441181 U.S.A. 1-800-742-2345